

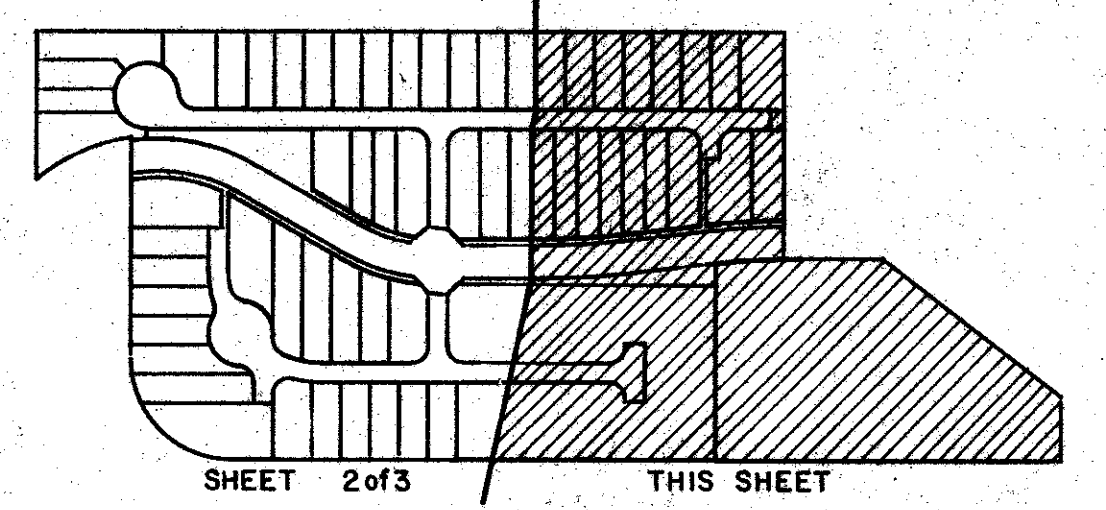
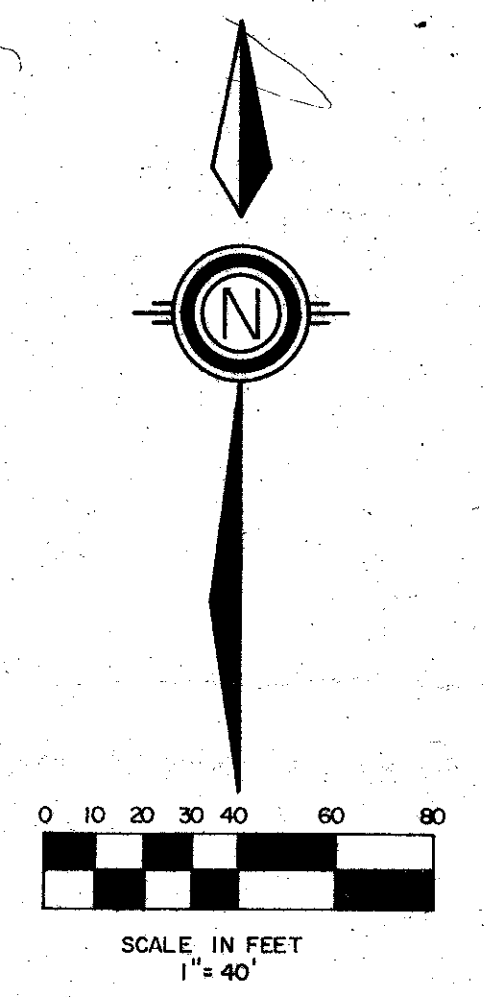
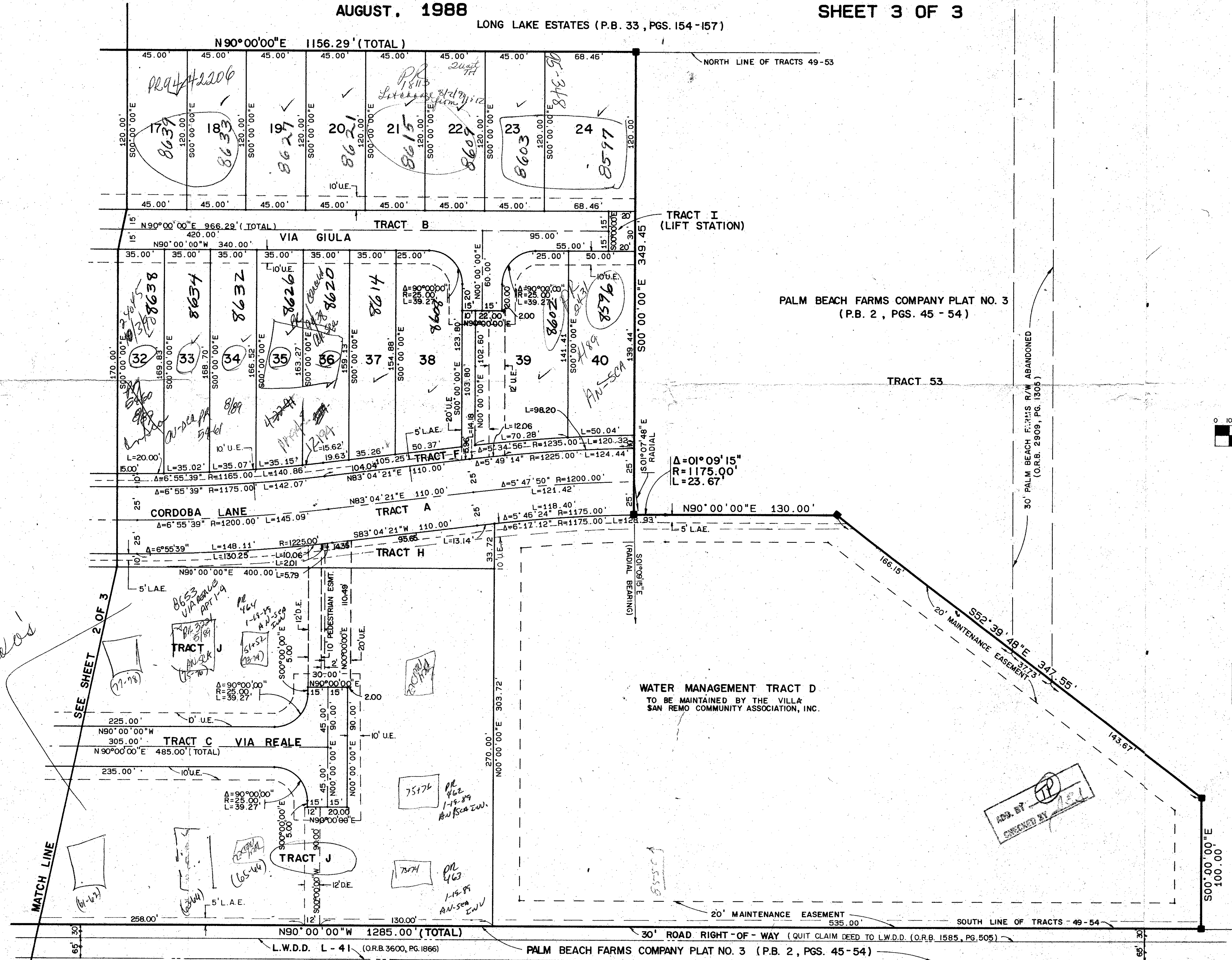
60/157

BOCA AZUL - PHASE TWO

A REPLAT OF TRACTS 51 AND 52, AND P/O TRACTS 49, 50, 53, AND 54 OF BLOCK 72,
PALM BEACH FARMS COMPANY PLAT NO. 3, (P.B.2, PG.45-54)
SITUATE IN SECTION 5, TOWNSHIP 47 SOUTH, RANGE 42 EAST,
PALM BEACH COUNTY, FLORIDA

AUGUST, 1988 SHEET 3 OF 3
LONG LAKE ESTATES (P.B. 33, PGS. 154-157)

STATE OF FLORIDA
COUNTY OF PALM BEACH
THIS PLAT WAS FILED FOR
RECORD _____ DAY OF _____
THIS _____ DAY OF _____
AD, 1988 AND DULY RECORDED
IN PLAT BOOK _____ ON PAGES
_____ AND _____
JOHN B. DUNKLE, CLERK
BY: _____, D.C.



SUBMISSION Boca Azul
BOOK 60 PAGE 159
FLORIDA PLAT NO. 3
SHEET 3 OF 3
DATE 8/23/88
BY STANLEY/WANTMAN, INC.

Condo's

SEE SHEET 2 OF 3

APPROVED BY
CHECKED BY

60/157
0203-001

STANLEY/WANTMAN, INC.
2000 LOMBARD STREET, WEST PALM BEACH, FL 33407 (305) 842-7444
DRAWN D.M.W. DATE Feb. 1988
CHECKED W.B.H. SCALE 1"=40'
DRAWING NO. 09513PL2
BOCA AZUL - PHASE TWO