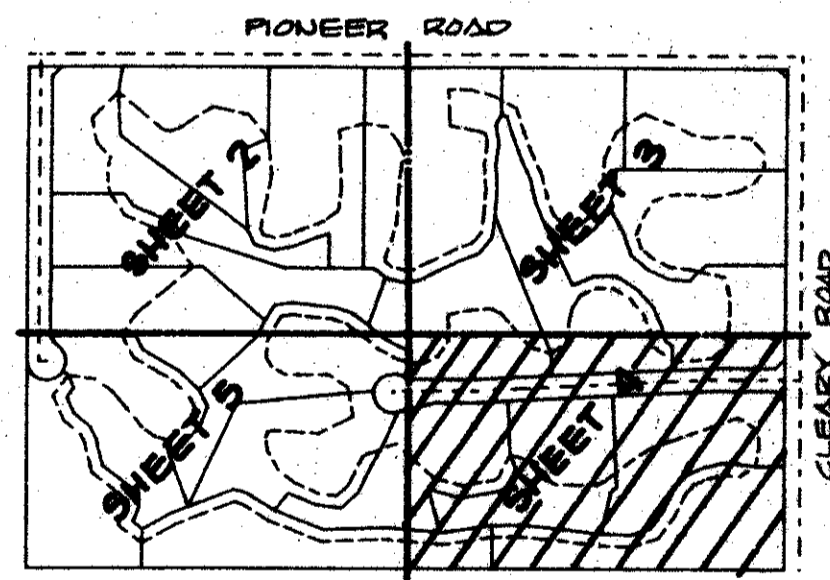
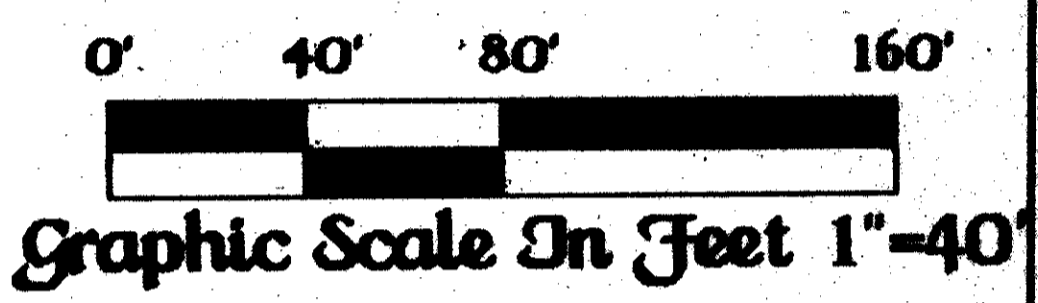
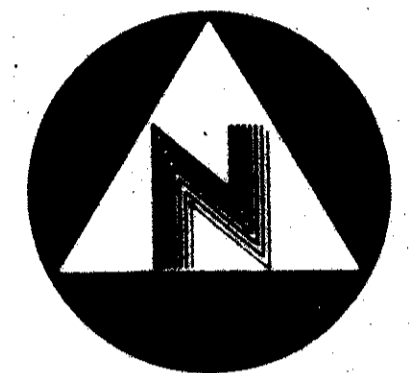
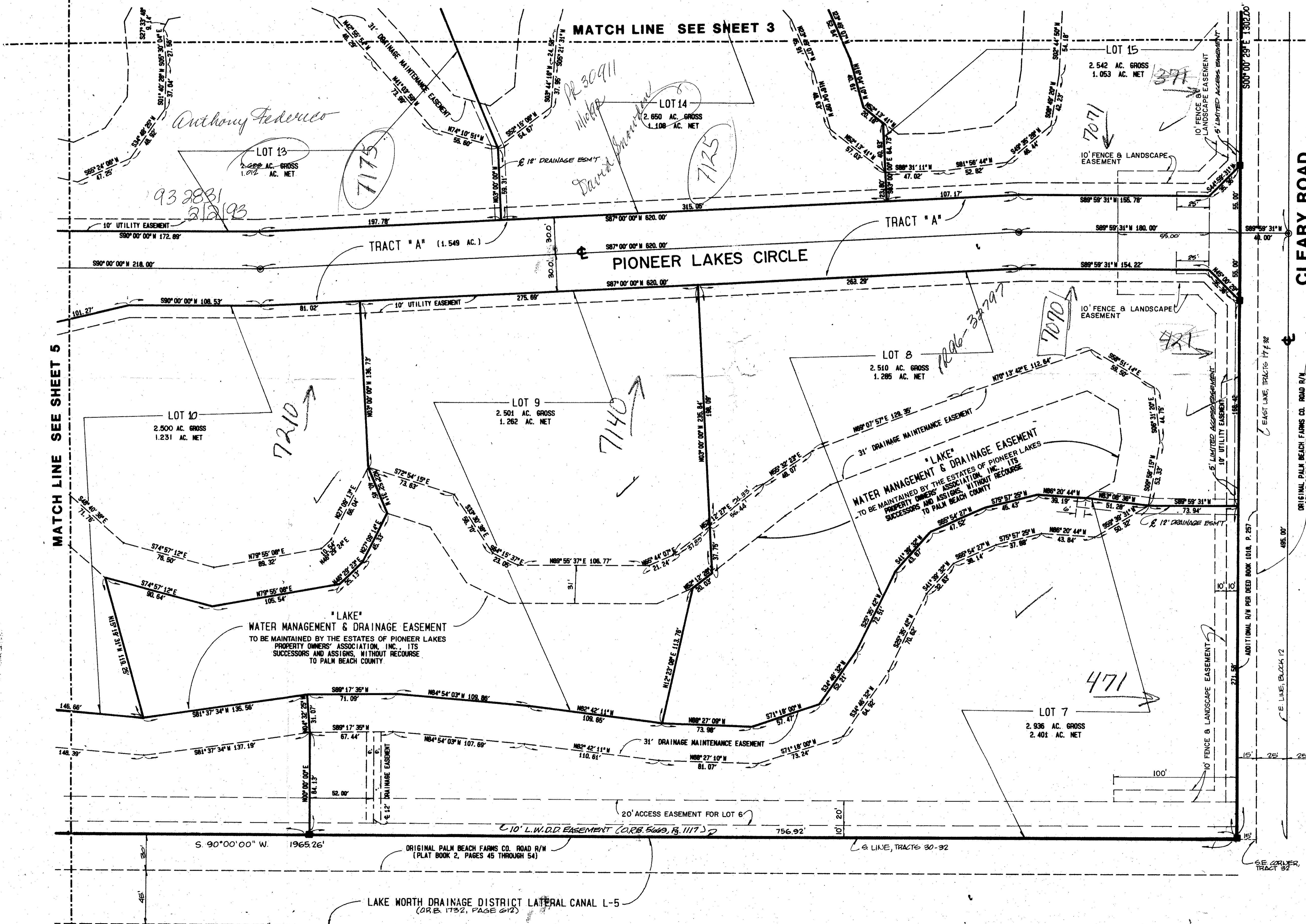


THE ESTATES OF PIONEER LAKES

June, A.D. Nineteen Hundred Eighty Seven

Sheet Four Of Five

State of Florida )
County of Palm Beach )
This plat was filed for record at this day of 1987, and duly recorded in Plat Book on Pages thru
John B. Dunkle, Clerk of the Circuit Court.
By Deputy Clerk



KEY MAP N.T.S.

60/122 0368-002
ADD. BY
CHECKED BY

This instrument was prepared by Wm. R. Van Campen, R.L.S., in and for the offices of Bench Mark Land Surveying & Mapping, Inc., 4152 West Blue Heron Boulevard, Suite 121, Riviera Beach, FL, 33404.

BENCH MARK LAND SURVEYING & MAPPING, INC.
WEST PALM BEACH, FLORIDA
MIAMI, FLORIDA

Record Plat
THE ESTATES OF PIONEER LAKES
SCALE 1"=40' SIZE 24x36' DATE JUNE 87 WD. NO. 86-042

TAZ 284