

THE ESTATES OF PIONEER LAKES

State of Florida )
County of Palm Beach )
This Plat was filed for record at this day of A.D., 1987, and duly recorded in Plat Book on Pages thru
John B. Dunkle, Clerk of the Circuit Court.
By: Deputy Clerk

June, A.D., Nineteen Hundred Eighty Seven

Sheet Three Of Five

PALM BEACH FARMS Co. PLAT No. 3 PLAT BOOK 2, PGS. 45-54

ORIGINAL PALM BEACH FARMS Co. ROAD R/W (PLAT BOOK 2, PGS. 45-54)

PIONEER ROAD

N 90°00'00"W 1975.36'

N. LINE, TRACTS 17-19

ADDITIONAL R/W PER DEED BOOK 950, PG. 172

N 90°00'00"E 1969.36'

NE CORNER TRACT 17

355.24'

322.72'

392.65'

25'

25'

7100

7084

7094

7070

91-9805 Bay Sites

EXISTING HOUSE 880-30756 USING 7100

LOT 19 4.103 AC. GROSS 2.708 AC. NET

LOT 18 2.555 AC. GROSS 2.026 AC. NET

LOT 17 2.501 AC. GROSS 1.676 AC. NET

LOT 16 2.514 AC. GROSS 1.638 AC. NET

LOT 15

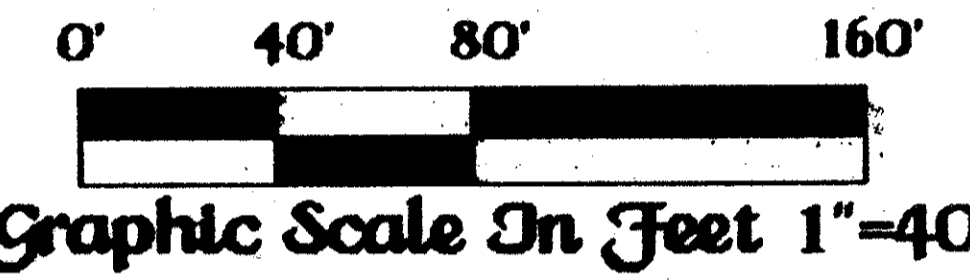
LOT 14

LOT 15

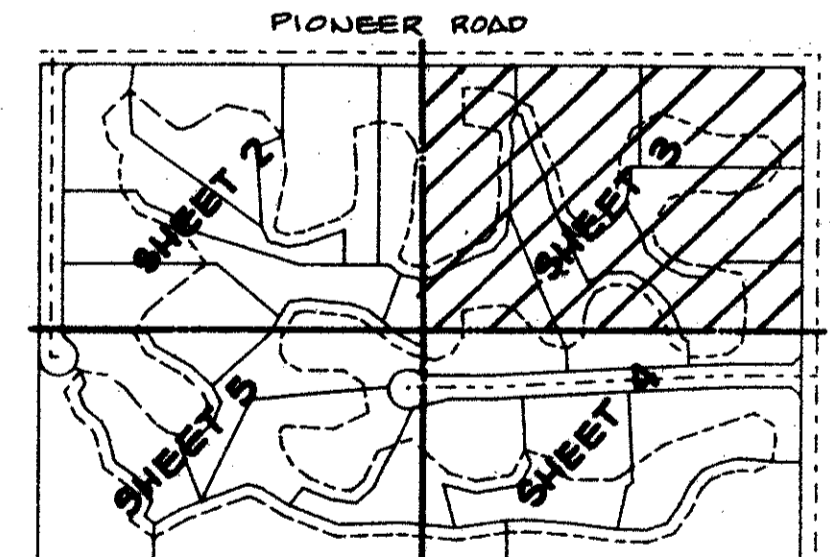
LAKE WATER MANAGEMENT & DRAINAGE EASEMENT TO BE MAINTAINED BY THE ESTATES OF PIONEER LAKES PROPERTY OWNERS' ASSOCIATION, INC., ITS SUCCESSORS AND ASSIGNS, WITHOUT RECOURSE TO PALM BEACH COUNTY

LAKE WATER MANAGEMENT & DRAINAGE EASEMENT TO BE MAINTAINED BY THE ESTATES OF PIONEER LAKES PROPERTY OWNERS' ASSOCIATION, INC., ITS SUCCESSORS AND ASSIGNS, WITHOUT RECOURSE TO PALM BEACH COUNTY

LAKE WATER MANAGEMENT & DRAINAGE EASEMENT TO BE MAINTAINED BY THE ESTATES OF PIONEER LAKES PROPERTY OWNERS' ASSOCIATION, INC., ITS SUCCESSORS AND ASSIGNS, WITHOUT RECOURSE TO PALM BEACH COUNTY



Graphic Scale In Feet 1"=40'



KEY MAP N.T.S.



0368-002

60/121

This instrument was prepared by Wm. R. Van Campen, R.L.S., in and for the offices of Bench Mark Land Surveying & Mapping, Inc., 4152 West Blue Heron Boulevard, Suite 121, Riviera Beach, FL, 33404.

BENCH MARK LAND SURVEYING & MAPPING, INC. 4152 WEST BLUE HERON BOULEVARD, SUITE 121, RIVIERA BEACH, FLORIDA 33404

Record Plat THE ESTATES OF PIONEER LAKES

DWN A.M. PRD W.V.C. DATE JUNE '87 WD. NO. 86-012 SCALE 1"=40' SIZE 24"x36" SHEET 3 OF 5

MATCH LINE SEE SHEET 2

MATCH LINE SEE SHEET 4

TAZ 284