

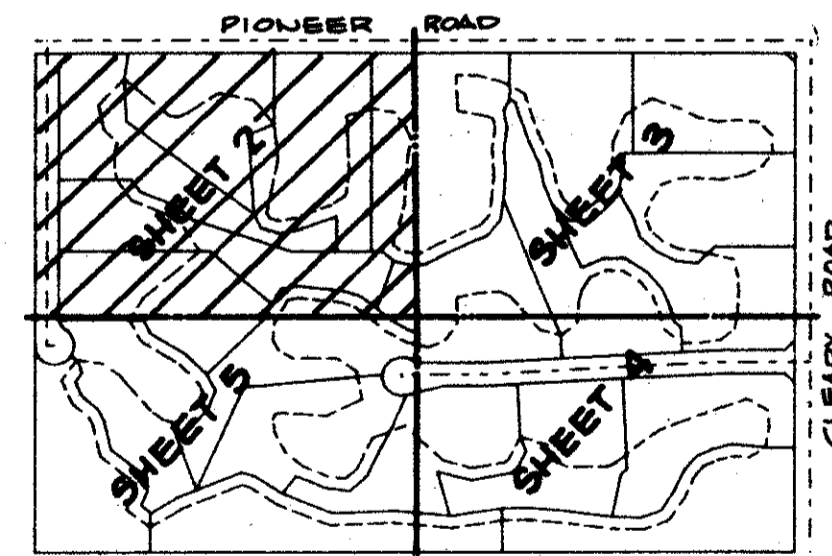
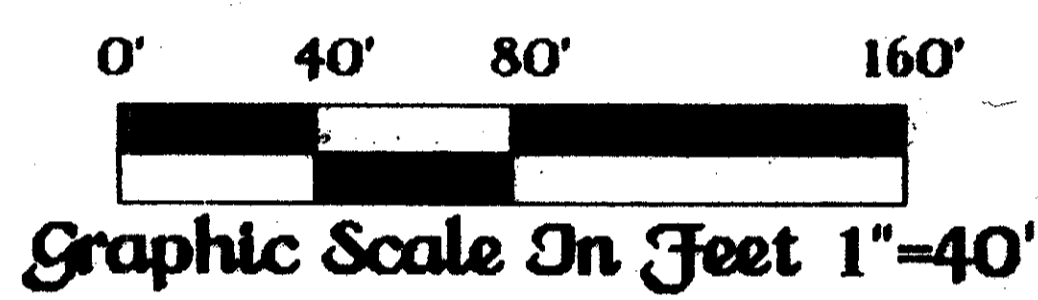
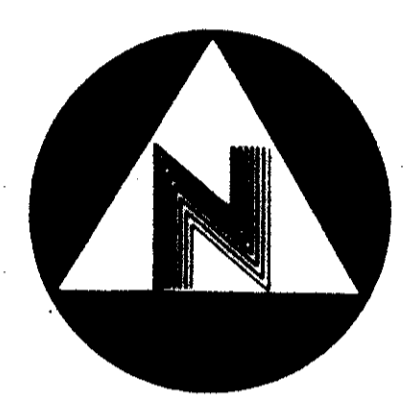
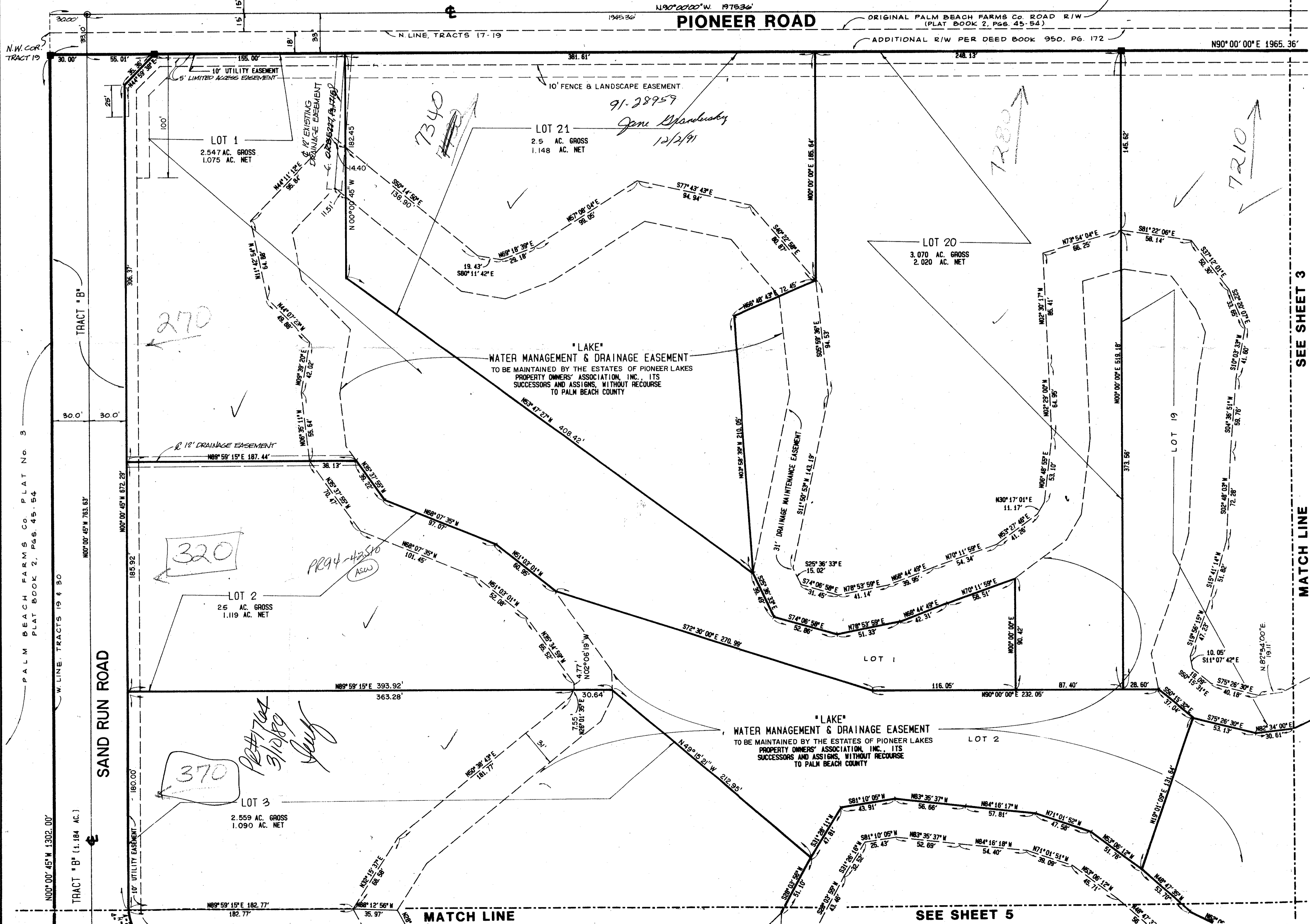
THE ESTATES OF PIONEER LAKES

June, A.D., Nineteen Hundred Eighty Seven

Sheet Two Of Five

State of Florida )
County of Palm Beach )
This Plat was filed for record at this day of A.D., 1987, and duly recorded in Plat Book on Pages thru
John B. Dunkle, Clerk of the Circuit Court.
By Deputy Clerk

PALM BEACH FARMS Co. PLAT No. 3
PLAT BOOK 2, PGS 45-54
PIONEER ROAD
ORIGINAL PALM BEACH FARMS Co. ROAD R/W (PLAT BOOK 2, PGS 45-54)
ADDITIONAL R/W PER DEED BOOK 950, PG. 172



60/120
0368-002

This instrument was prepared by Wm. R. Van Campen, R.L.S., in and for the offices of Bench Mark Land Surveying & Mapping, Inc., 4152 West Blue Heron Boulevard, Suite 121, Riviera Beach, FL, 33404.

BENCH MARK LAND SURVEYING & MAPPING, INC.
Record Plat
THE ESTATES OF PIONEER LAKES
OWN A.M. CKD W.V.C. DATE JUNE '87 WD. NO. 86-043
SCALE 1"=40' PRICE 21.750 SHEET 2 OF 5