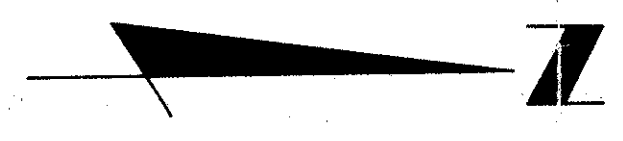
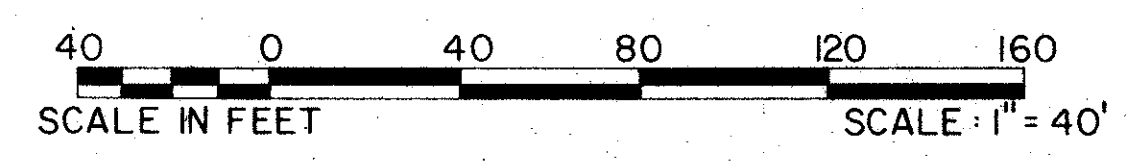


SONATA AT MISSION BAY P.U.D.

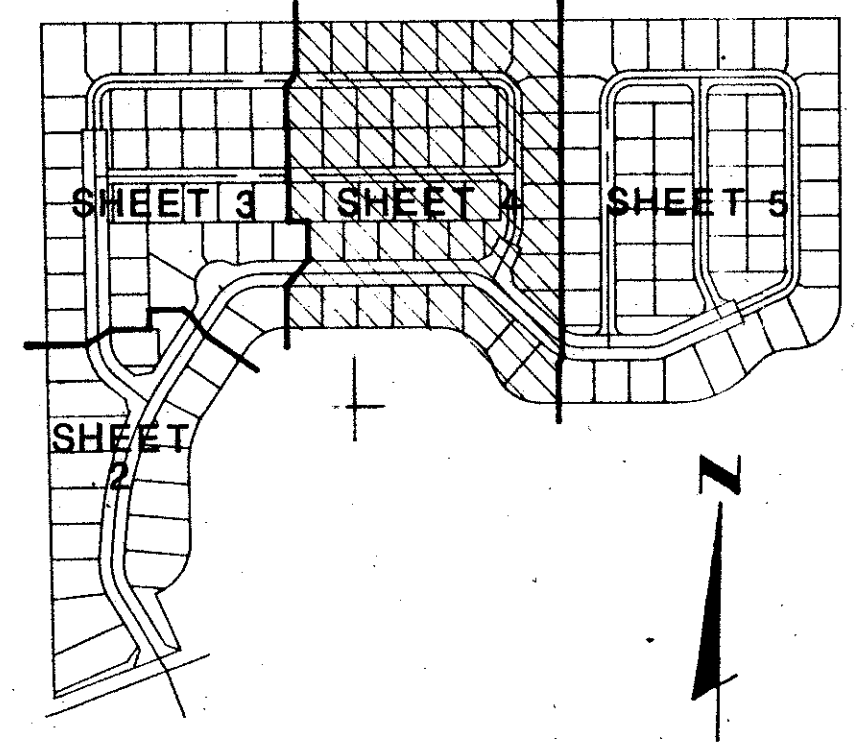
BEING A REPLAT OF TRACT "B" OF MISSION BAY P.U.D., AS RECORDED IN PLAT BOOK 53, PAGES 112 THRU 120, OF THE PUBLIC RECORDS OF PALM BEACH COUNTY, FLORIDA.

IN PART OF SECTIONS 13 AND 14, TOWNSHIP 47 SOUTH, RANGE 41 EAST PALM BEACH COUNTY, FLORIDA IN FIVE SHEETS SHEET NO. 4

GEE & JINSON
ENGINEERS - ARCHITECTS - PLANNERS, INC.
WEST PALM BEACH, FLORIDA
DECEMBER 1987



STATE OF FLORIDA
COUNTY OF PALM BEACH
This plat was filed for
record at _____ M. this _____ day
of _____ 1988, and duly
recorded in Plat Book No. _____
on Pages _____ thru _____.
JOHN B. DUNKLE
Clerk Circuit Court
By: _____ D.C.

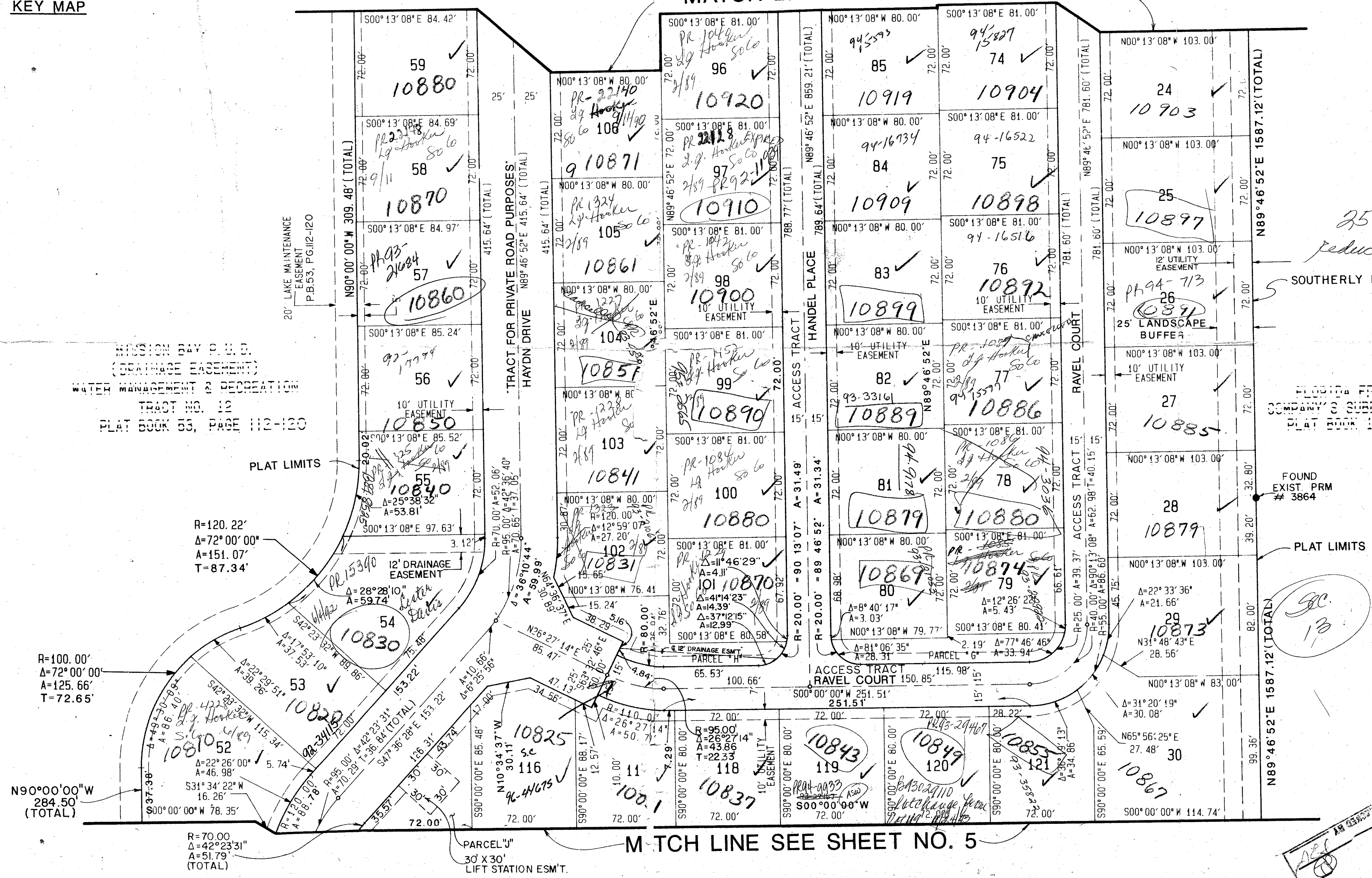


KEY MAP

MISSION BAY P.U.D.
PAGE 84
PLAT BOOK 53, PAGE 112-120
JOB NO. 87-508.1

Step 5

MATCH LINE SEE SHEET NO. 3



25' Buffer has been reduced to 15' per Bill Youngblood

SOUTHERLY BOUNDARY

PLANNED FRUIT LANDS COMPANY'S SUBDIVISION NO. 2 PLAT BOOK 1, PART 100

FOUND EXIST. PRM # 3864

PLAT LIMITS

0454-013

MATCH LINE SEE SHEET NO. 5

COMPUTED: D.W.L. K.A.P.
DRAWN: D.W.L. K.A.P.
CHECKED: J.H.D.
APPROVED: R.M.
REVISION:

SONATA AT MISSION BAY P.U.D. 00/84