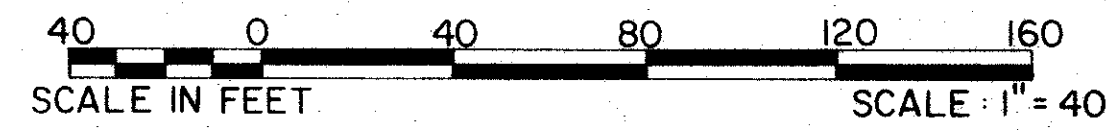
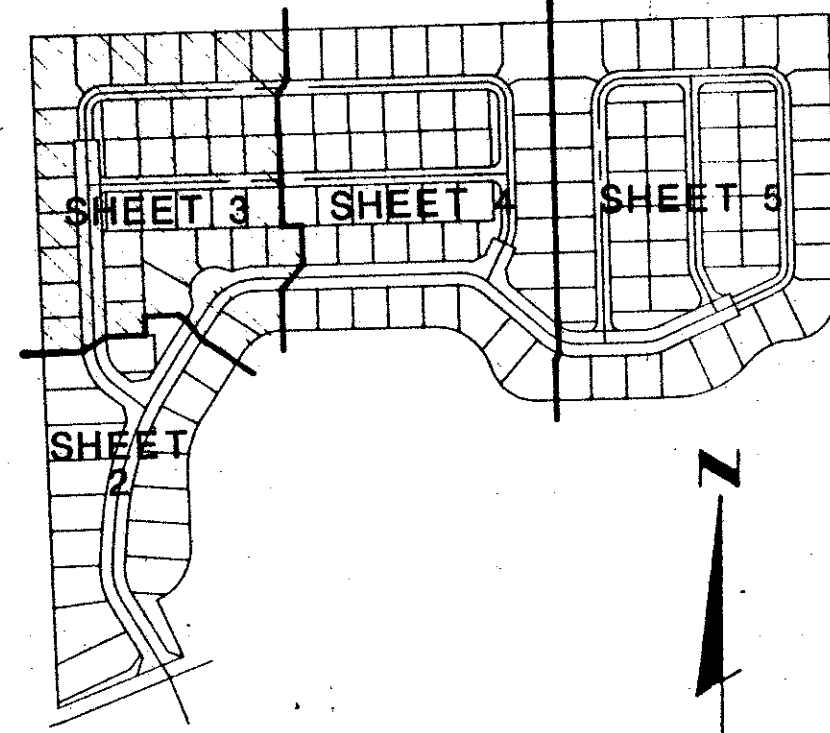


SONATA AT MISSION BAY P.U.D.

BEING A REPLAT OF TRACT "B" OF MISSION BAY P.U.D., AS RECORDED IN PLAT BOOK 53, PAGES 112 THRU 120, OF THE PUBLIC RECORDS OF PALM BEACH COUNTY, FLORIDA.

IN PART OF SECTIONS 13 AND 14, TOWNSHIP 47 SOUTH, RANGE 41 EAST PALM BEACH COUNTY, FLORIDA IN FIVE SHEETS SHEET NO. 3

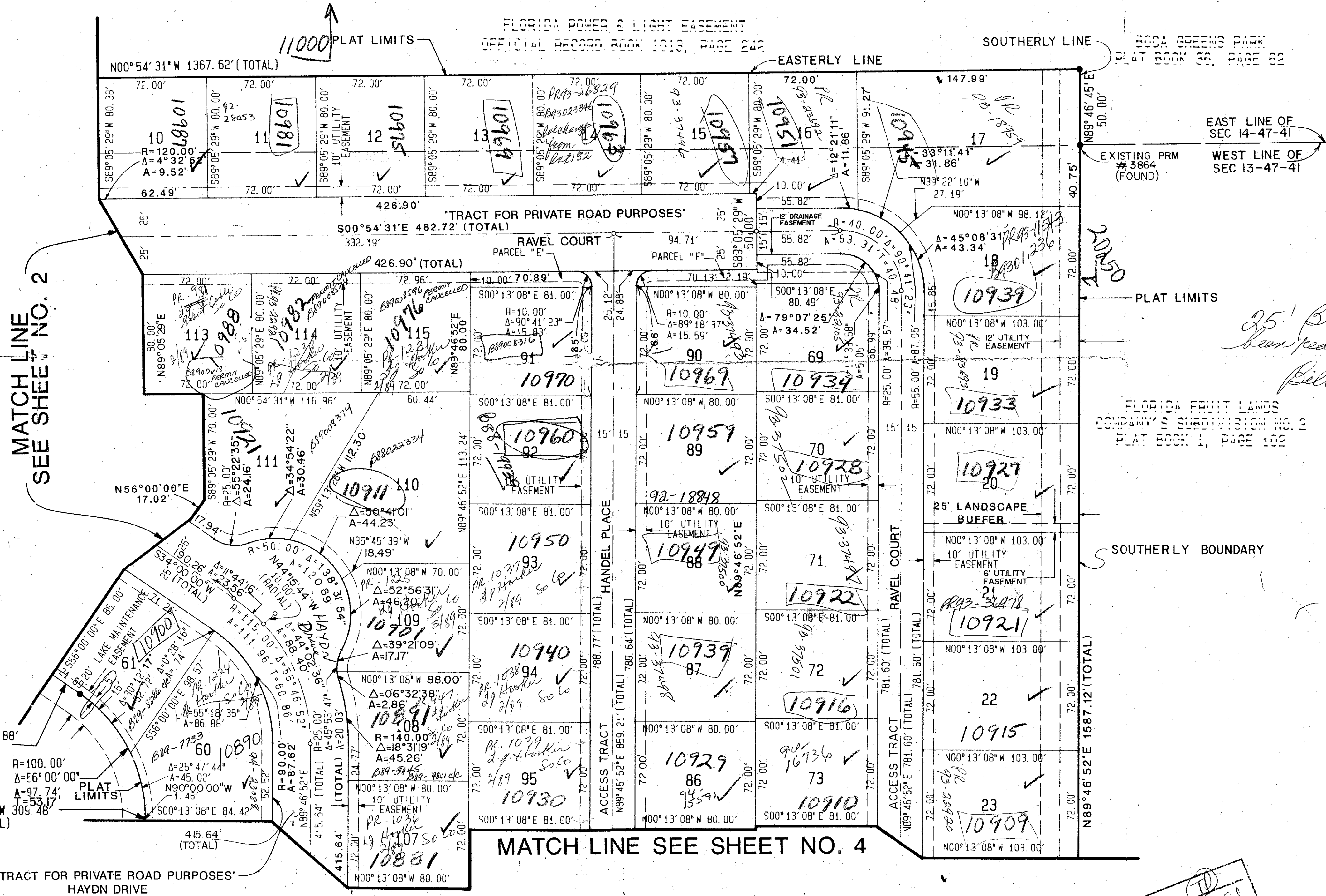
GEE & JENSON
ENGINEERS - ARCHITECTS - PLANNERS, INC.
WEST PALM BEACH, FLORIDA
DECEMBER 1987



STATE OF FLORIDA
COUNTY OF PALM BEACH
This plat was filed for
record at _____ M. this _____ day
of _____ 1988, and duly
recorded in Plat Book No. _____
on Pages _____ thru _____
JOHN B. DUNKLE
Clerk Circuit Court
By: _____ D.C.

MISSION BAY P.U.D.
PAGE 51
BOOK 60
PLAT BOOK 53, PAGE 112-120
DATE 12/15/87
FILE NO. 87-508.1

KEY MAP



MATCH LINE
SEE SHEET NO. 2

MATCH LINE SEE SHEET NO. 4

*25' Buffer Esmt has
been reduced to 15' per
Bill Young blood*

FLORIDA FRUIT LANDS
COMPANY'S SUBDIVISION NO. 13
PLAT BOOK 1, PAGE 102

MISSION BAY P.U.D.
(DRAINAGE EASEMENT)
WATER MANAGEMENT & RECREATION
TRACT NO. 12
PLAT BOOK 53, PAGE 112-120

COMPUTED D.W.L./C.A.P.
DRAWN D.W.L./C.A.P.
CHECKED A.H.D.
APPROVED P.M.
REVISION _____

ADD. BY [initials]
CHECKED BY [initials]

0454-013

0454-013

SONATA AT MISSION BAY P.U.D.