

- Gardens Of Ben Gurion -

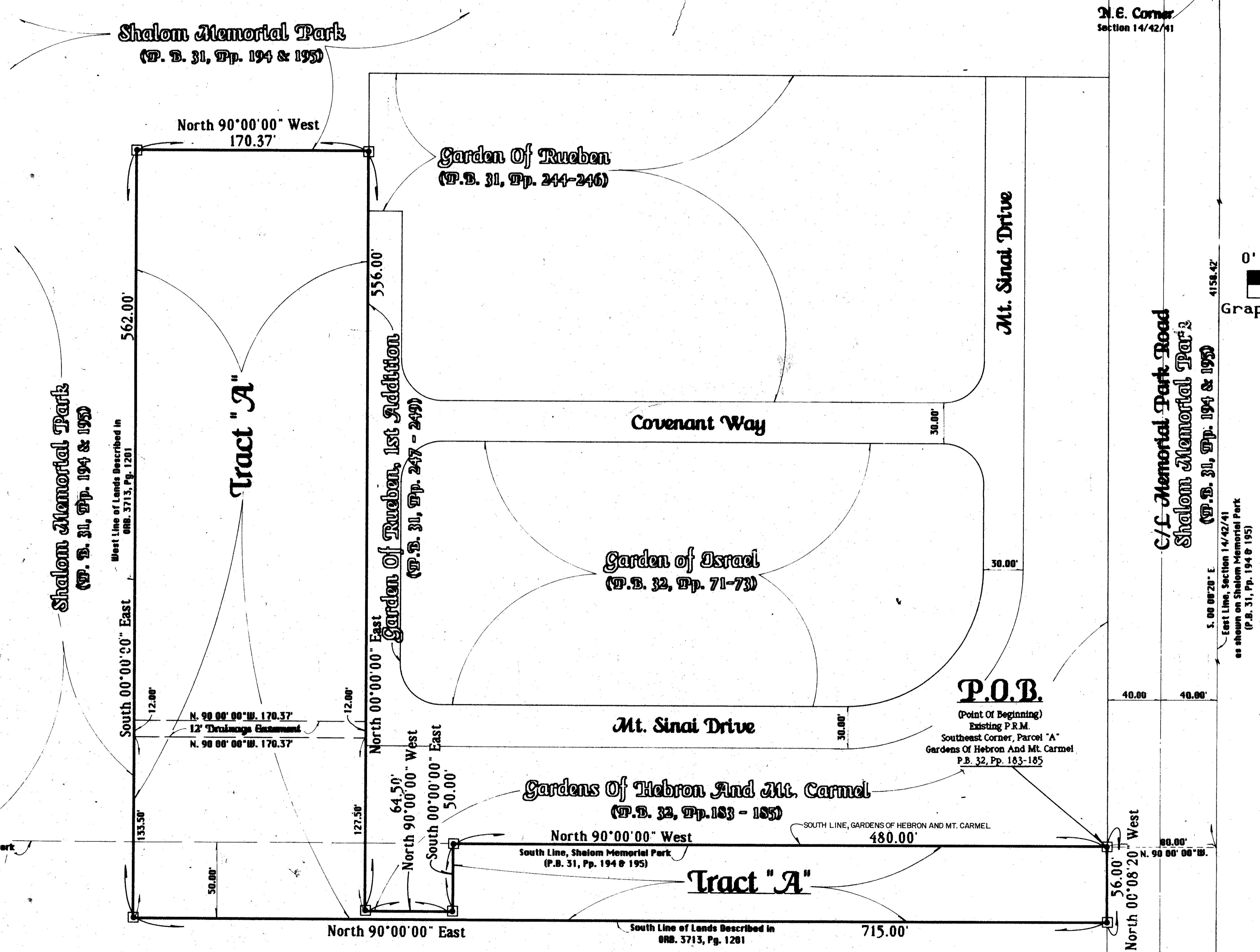
- Lying On Section 14, Township 42 South, Range 41 East, Palm Beach County, Florida -
 - Being A Replat Of Portion Of Shalom Memorial Park, P. B. 31, Pp. 194 & 195, Public Records, Palm Beach County, Florida -
 April, A.D., Nineteen Hundred Eighty Seven

75
 State Of Florida)
 County Of Palm Beach) ss
 This Plat was filed for record
 at _____ this _____ day of
 _____ A.D., 1987, and
 duly recorded in Plat Book
 _____ on Pages _____ through

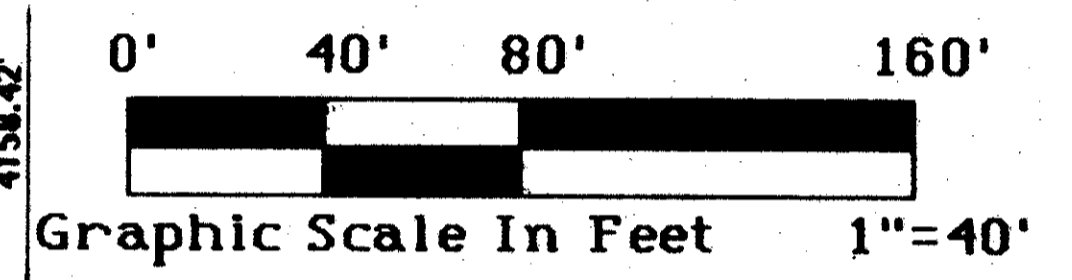
 John B. Dunkle,
 Clerk of the Circuit Court.
 By: _____
 Deputy Clerk

Sheet 2 of 3

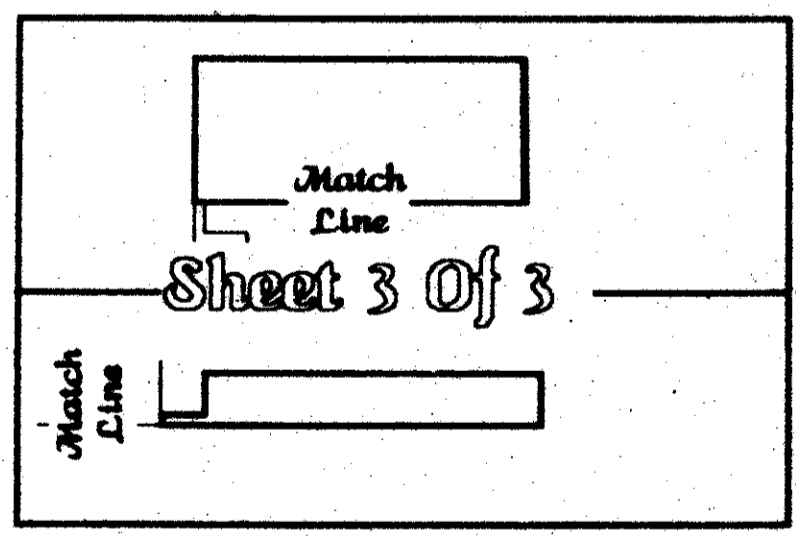
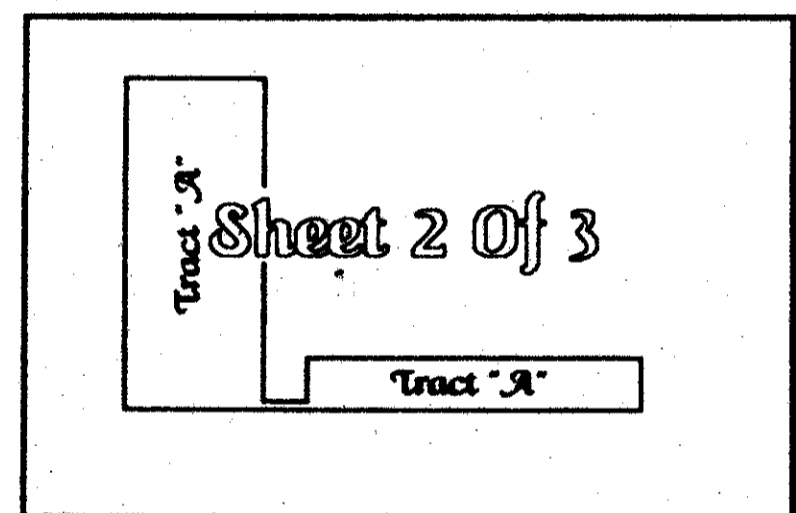
SUBDIVISION - Gardens Of Ben Gurion
 BOOK 60, PAGE 75
 FLOOD ZONE 58A
 ZONING 58
 ZIP CODE 33412
 PUB NAME _____



N.E. Corner
 Section 14/42/41



Unplatted



Note:
 See Sheet 3 of 3 for Gravesite Configuration.

0536-001

This instrument was prepared by Wm. R. Van Campen, R.L.S., in and for the offices of Bench Mark Land Surveying & Mapping, Inc., 4152 W. Blue Heron Boulevard, Suite 121, Riviera Beach, FL.

BENCH MARK
 LAND SURVEYING & MAPPING, INC.
WEST PALM BEACH, FLORIDA - RIVIERA BEACH, FLORIDA

- Record Plat -
Gardens Of Ben Gurion

OWN	CKD	DATE	NO. NO. 87-204
SCALE	PLAT	P	SHEET OF

- Unplatted -

60/75