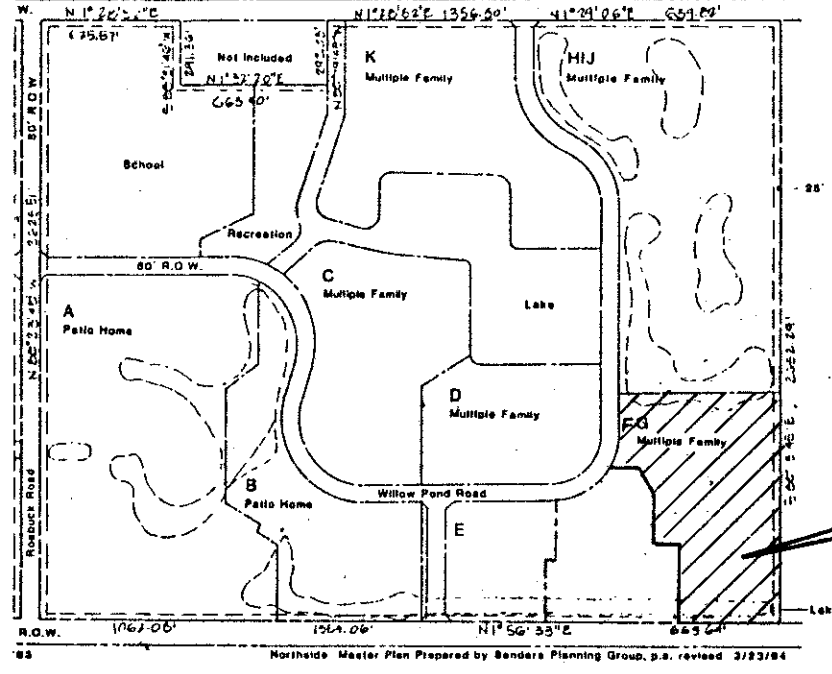


A PORTION OF A P.U.D.  
**LAKESIDE GREEN-PLAT NO. 8**  
SECTION 12, TOWNSHIP 43 SOUTH, RANGE 42 EAST  
PALM BEACH COUNTY, FLORIDA  
IN 2 SHEETS, SHEET NO. 2  
SEPTEMBER, 1987



PROJECT LOCATION

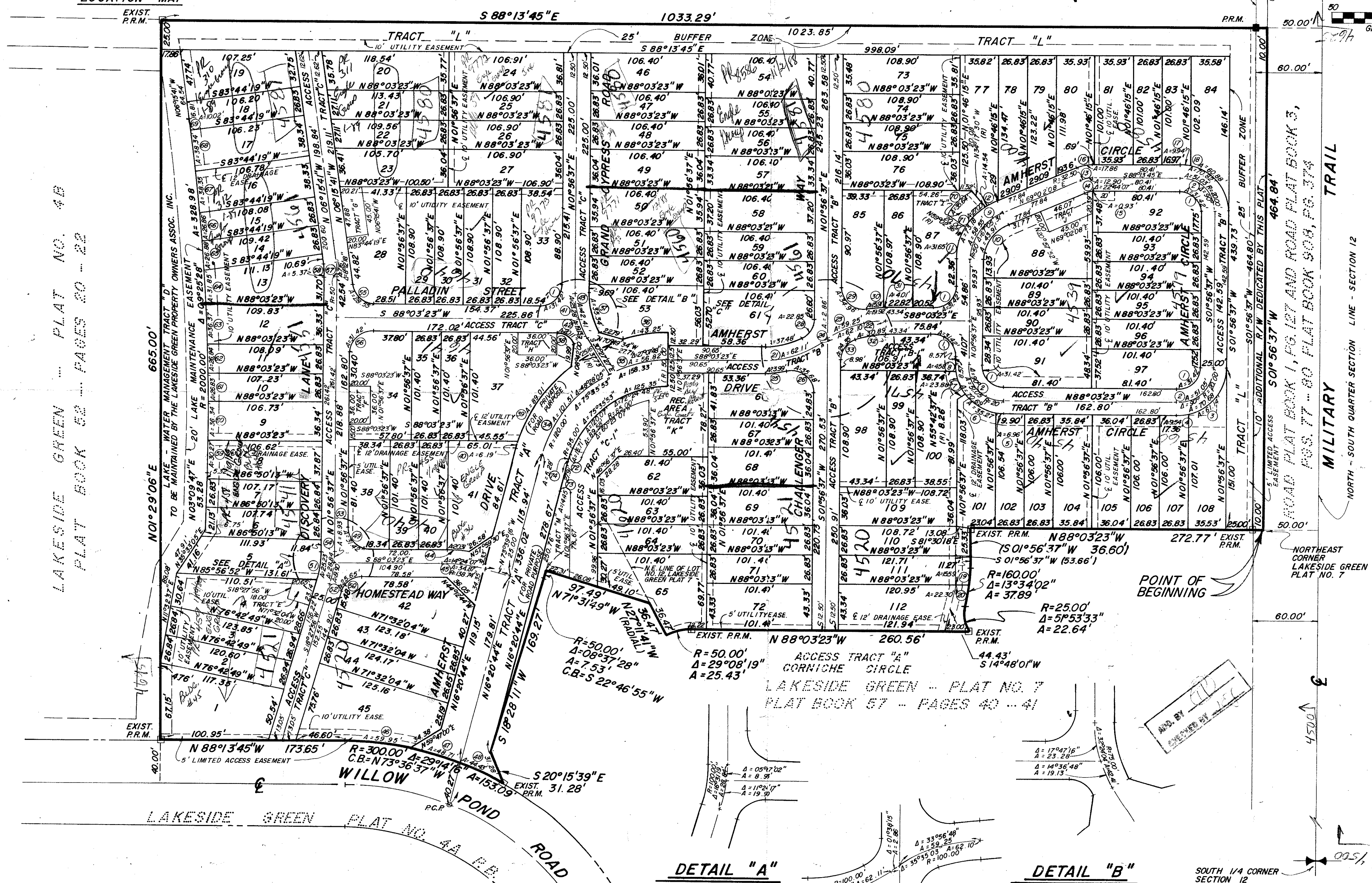
ALSO BEING A REPLAT OF A PORTION OF LOT NO. 12, LAKESIDE GREEN-PLAT NO. 7, AS RECORDED IN PLAT BOOK 57, PAGES 40 AND 41, PUBLIC RECORDS OF PALM BEACH COUNTY, FLORIDA

NOT PLATTED

SUBDIVISION \*  
BOOK 66  
FLOOD ZONE  
ZONING  
E  
PLAT NAME  
LAKESIDE GREEN

LOCATION MAP  
EXIST. P.R.M.

LAKESIDE GREEN - PLAT NO. 4B  
PLAT BOOK 52 - PAGES 20 - 22



LAKESIDE GREEN - PLAT NO. 5  
PLAT BOOK 51 - PAGES 30-31

DETAIL "A"  
NOT TO SCALE

DETAIL "B"  
NOT TO SCALE

DETAIL "C"  
NOT TO SCALE

LAKESIDE GREEN - PLAT NO. 8  
CURVE DATA

CURVE NO.	RADIUS	CENTRAL ANGLE	ARC
C-1	20.00'	90°00'00"	31.42'
C-2	32.50'	90°00'00"	51.05'
C-3	45.00'	77°51'06"	61.14'
C-4	45.00'	12°08'54"	9.54'
C-5	45.00'	8°51'32"	6.96'
C-6	45.00'	44°54'28"	35.27'
C-7	45.00'	30°24'01"	23.88'
C-8	45.20'	5°48'26"	4.58'
C-9	50.00'	67°05'31"	58.55'
C-10	37.50'	67°05'31"	43.91'
C-11	62.50'	29°00'47"	31.65'
C-12	62.50'	13°19'37"	14.54'
C-13	32.50'	22°44'07"	12.90'
C-14	20.00'	20°04'46"	7.01'
C-15	20.00'	2°39'21"	.93'
C-16	45.00'	22°44'07"	17.86'
C-17	45.00'	12°39'07"	9.94'
C-18	45.00'	77°31'15"	60.88'
C-19	160.00'	8°34'55"	15.59'
C-20	100.00'	79°59'07"	22.30'
C-21	100.00'	35°35'04"	62.11'
C-22	100.00'	35°35'03"	62.10'
C-23	100.00'	33°56'48"	59.25'
C-24	100.00'	1°38'15"	2.86'
C-25	112.50'	12°12'59"	23.99'
C-26	20.00'	102°12'59"	35.68'
C-27	87.50'	24°32'34"	37.48'
C-28	20.00'	65°27'26"	22.85'
C-29	20.00'	100°08'46"	34.96'
C-30	112.50'	8°06'11"	15.91'
C-31	112.50'	2°02'34"	4.01'
C-32	87.50'	20°13'50"	30.89'
C-33	20.00'	69°46'11"	24.35'
C-34	160.00'	48°28'05"	101.51'
C-35	120.00'	27°07'48"	56.82'
C-36	145.00'	17°05'27"	43.25'
C-37	62.50'	32°24'04"	35.34'
C-38	20.00'	57°35'56"	20.11'
C-39	145.00'	35°10'14"	89.01'
C-40	145.00'	2°26'47"	6.19'
C-41	75.00'	17°47'16"	23.28'
C-42	75.00'	14°36'48"	19.13'
C-43	75.00'	32°24'04"	42.41'
C-44	151.25'	7°41'40"	20.31'
C-45	138.74'	14°24'07"	34.87'
C-46	300.00'	11°27'01"	59.95'
C-47	300.00'	9°18'09"	48.71'
C-48	300.00'	8°29'06"	44.43'
C-49	20.00'	90°00'00"	31.42'
C-50	20.00'	73°28'41"	25.65'
C-51	87.50'	16°31'19"	26.23'
C-52	100.00'	11°24'17"	19.90'
C-53	100.00'	5°07'02"	8.93'
C-54	100.00'	16°31'19"	28.84'
C-55	20.00'	81°47'42"	28.55'
C-56	20.00'	90°00'00"	31.42'
C-57	50.00'	8°21'18"	7.16'
C-58	37.50'	8°12'18"	5.37'
C-59	2000.00'	0°52'02"	30.27'
C-60	2000.00'	1°02'28"	36.34'
C-61	2000.00'	0°46'08"	26.83'
C-62	2000.00'	0°46'08"	26.84'
C-63	2000.00'	1°02'31"	36.37'
C-64	2000.00'	0°54'44"	31.85'
C-65	2000.00'	0°46'13"	26.88'
C-66	2000.00'	0°46'11"	26.86'
C-67	2000.00'	1°05'55"	38.35'
C-68	2000.00'	1°05'55"	38.34'
C-69	2000.00'	0°17'14"	10.02'
C-70	82.50'	24°45'06"	35.64'
C-71	62.50'	24°45'06"	27.00'
C-72	5.00'	180°00'00"	15.71'
C-73	5.00'	165°35'53"	14.45'
C-74	95.00'	3°11'05"	5.28'

NOTE: (R) INDICATES RADIAL LINE

0265-004

ROSSI AND MALAVASI  
ENGINEERS, INC.  
WEST PALM BEACH,  
FLORIDA

A PORTION OF A P.U.D.  
**LAKESIDE GREEN-PLAT NO. 8**  
IN 2 SHEETS SHEET NO. 2

Date SEPTEMBER, 1987  
Designed R. ANDERSON  
Drawn M. BRADSHAW  
Checked  
Scale 1" = 50'  
Job No.  
File No.

Sheet 2 of 2