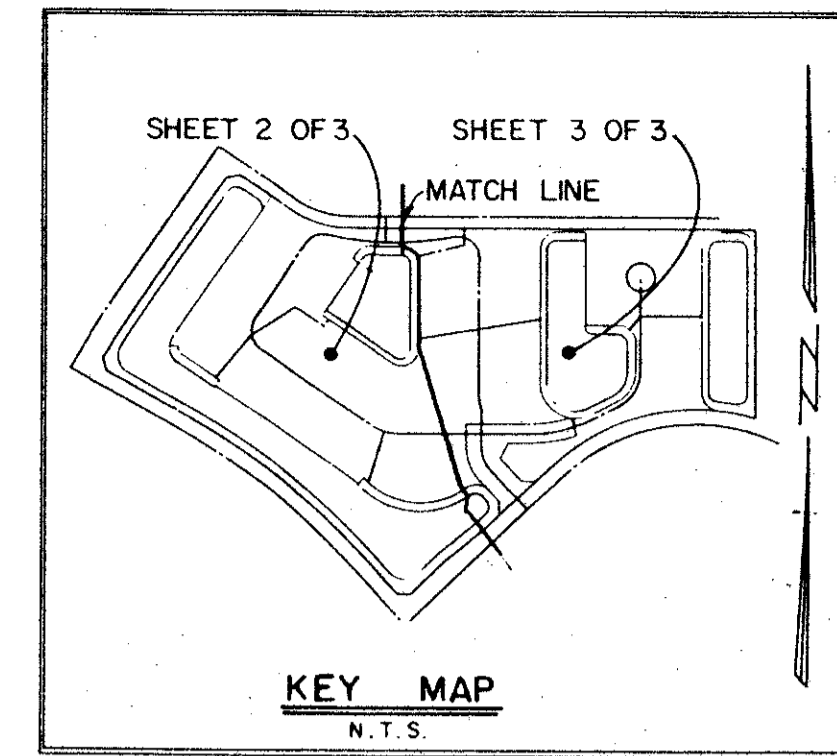


ABERDEEN PLAT NO. 11

A PLANNED UNIT DEVELOPMENT
 LYING IN SECTION 15, TOWNSHIP 45 SOUTH, RANGE 42 EAST,
 PALM BEACH COUNTY, FLORIDA.

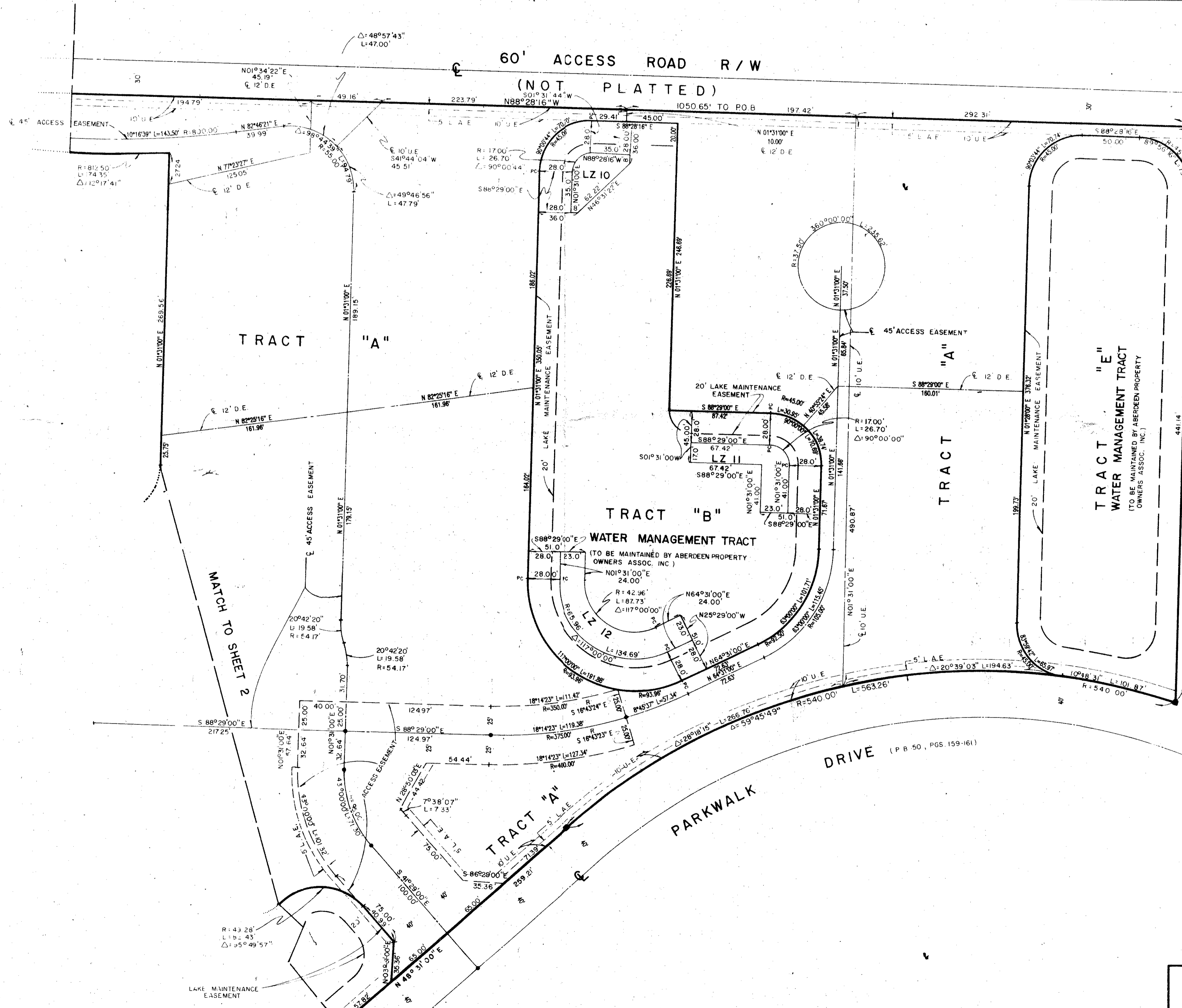
SHEET 3 OF 3

MAY, 1988.

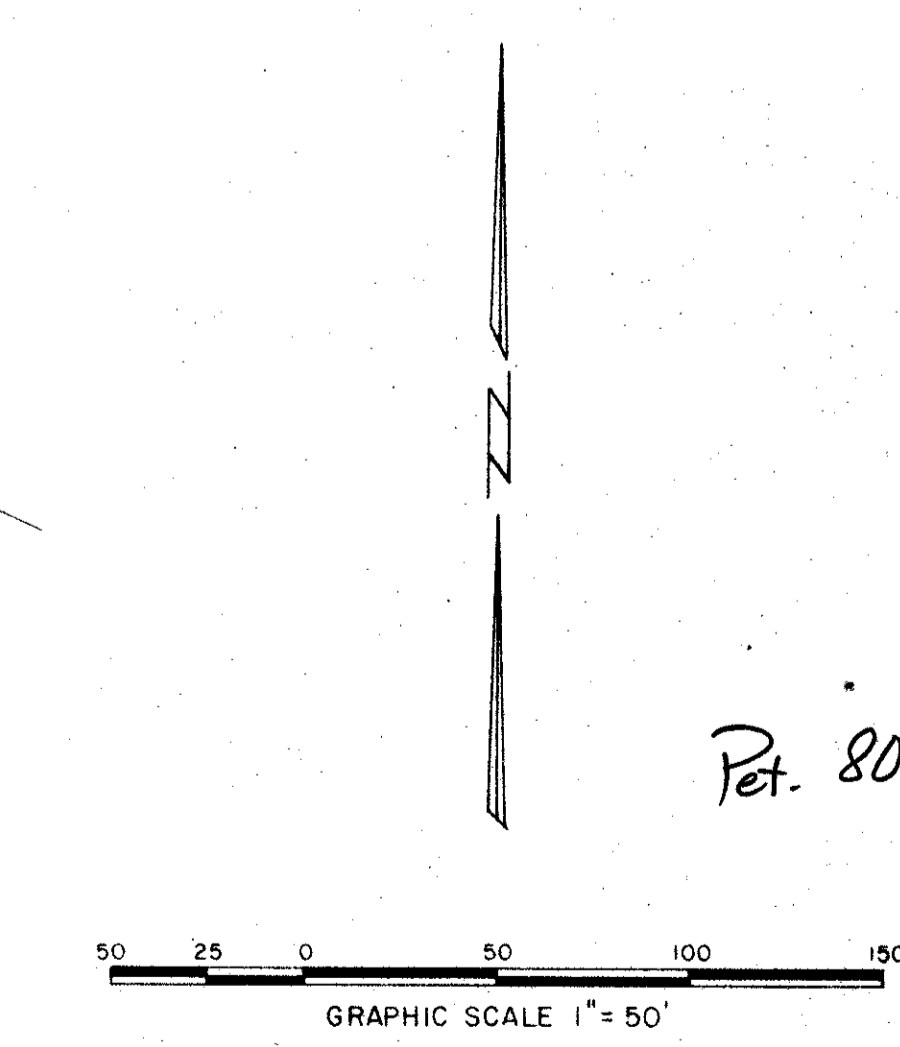


40

STATE OF FLORIDA
 COUNTY OF PALM BEACH
 This Plat was filed for record at _____
 _____ M. this _____ day of _____ 19____
 and duly recorded in Plat Book No. _____
 on Page _____
 John B. Dunkle, Clerk of the Circuit Court
 By _____ D.C.

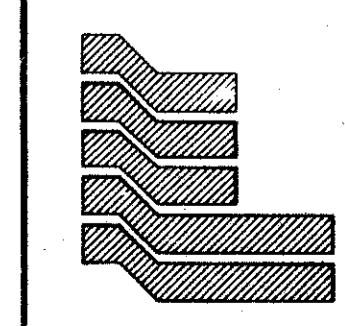


SUBDIVISION * Aberdeen #1
 BOOK 60- PAGE 40
 FLOOD ZONE B. FLOOD MAP # 153A
 QUAD # ZONING
 SEC ZIP CODE 33403
 FUD NAME



Per. 80-153

0270-013



Landmark Surveying & Mapping Inc.
 1850 FOREST HILL BOULEVARD
 PH. (305)433-5405 SUITE 200 W.P.B. FLORIDA

ABERDEEN PLAT NO. 11

60/40