

-Greater Boynton Place Plat No. 2-

193

October, A.D.,
Nineteen Hundred Eighty Seven

A Part Of Sun Valley, A Planned Unit Development, Lying On Section 26, Township 45 South, Range 42 East

Sheet 2 Of 4

Being A Replat Of Portions Of Tracts 41 - 45, Inclusive, Subdivision Of Section 26, (Plat Book 6, Page 26) Public Records, Palm Beach County, Florida

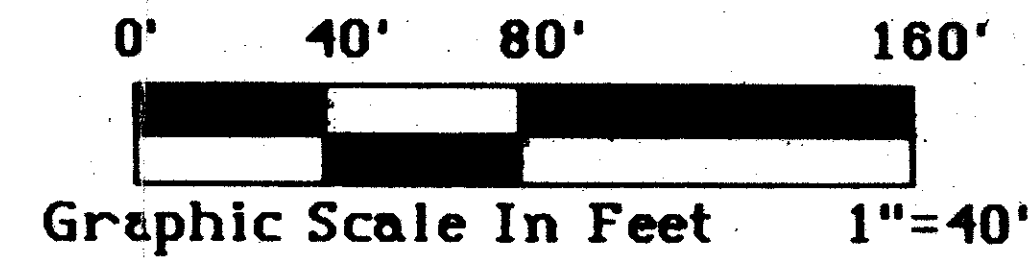
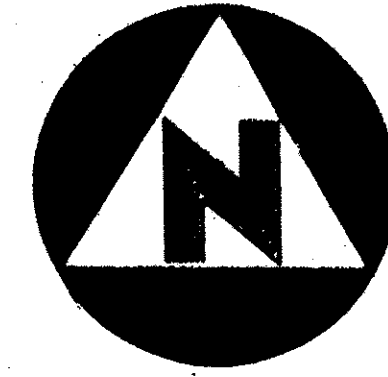
State of Florida)
County of Palm Beach)

This Plat was filed for record
at _____ this _____ day of
_____, A.D., 1987, and
duly recorded in Plat Book
_____ on Pages _____ thru
_____.

John B. Dunkle,
Clerk of the Circuit Court.

By _____
Deputy Clerk

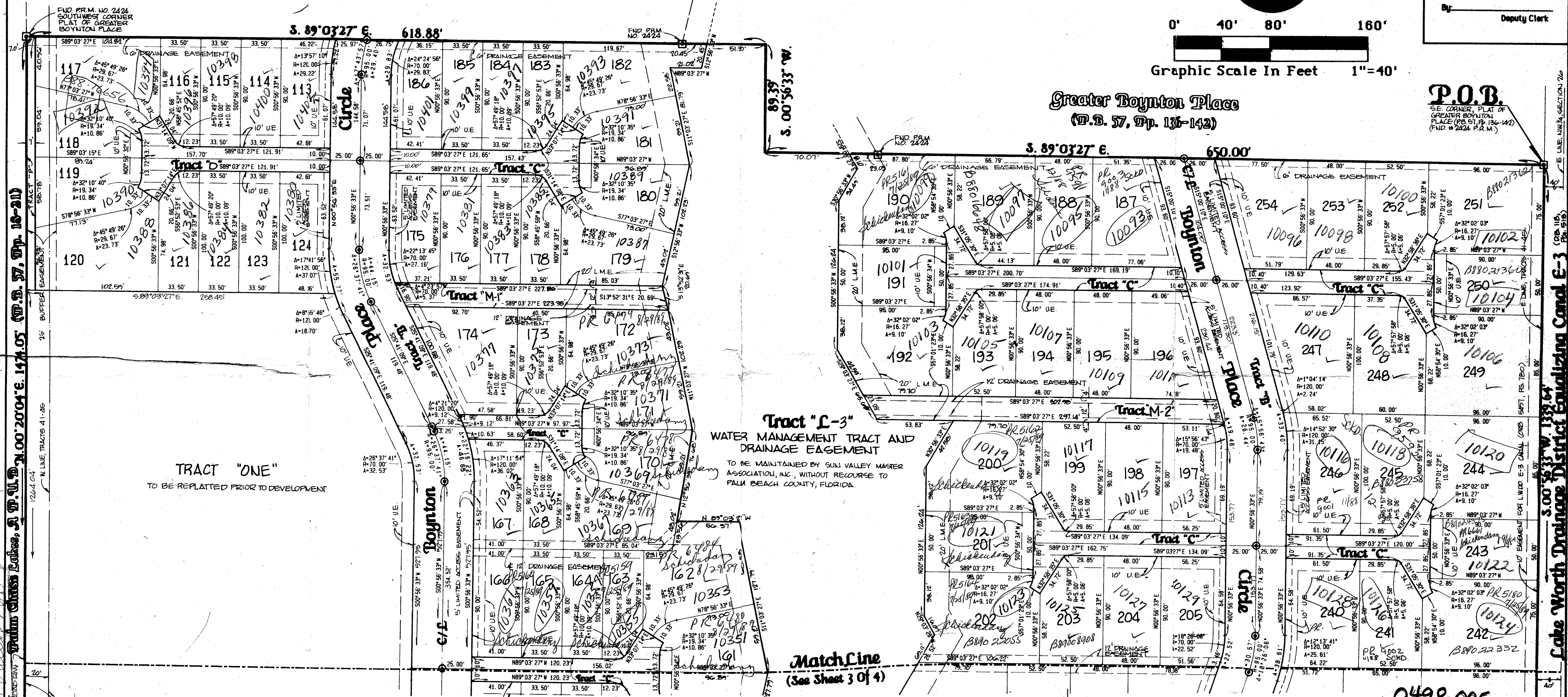
Greater Boynton Place
(P.B. 57, Pp. 136-143)



Greater Boynton Place
(P.B. 57, Pp. 136-142)

P.O.B.

SE CORNER, PLAT OF
GREATER BOYNTON
PLACE (P.B. 57, Pp. 136-142)
(FIND # 2424 P.R.M.)

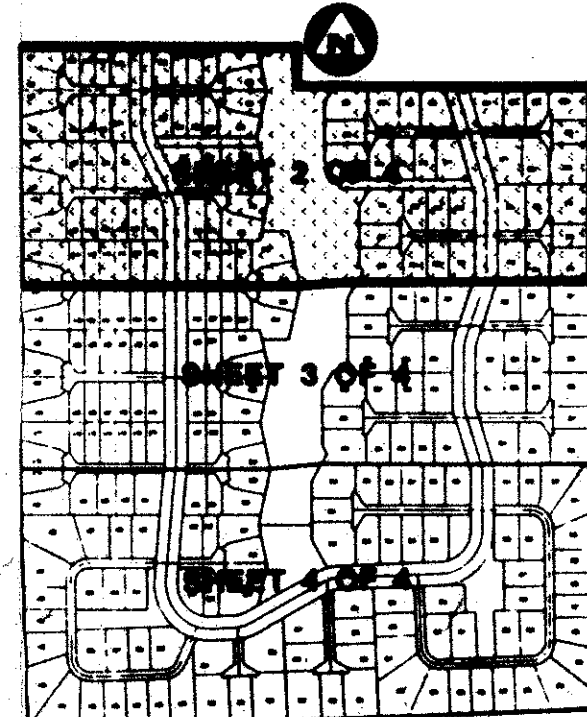
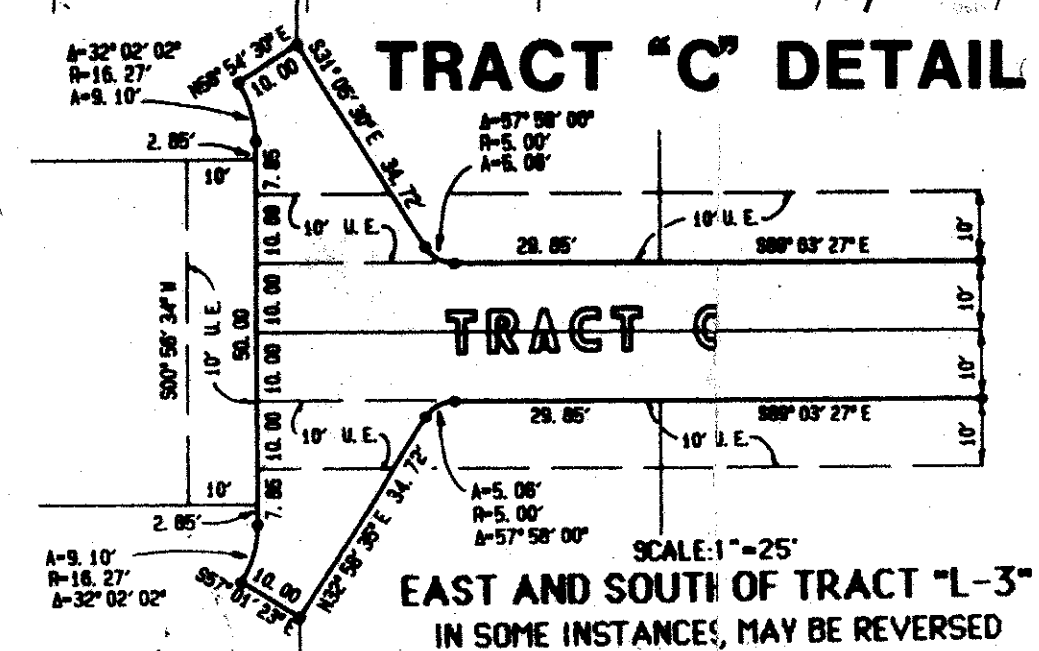
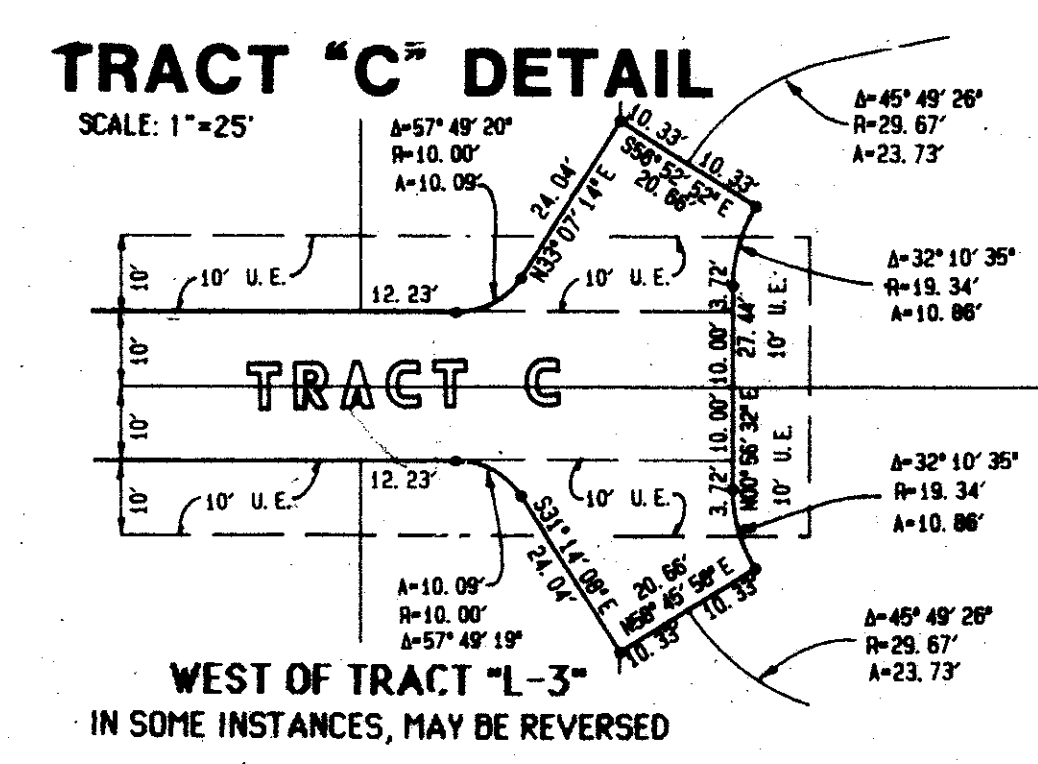


8445442
SUBDIVISION * Greater Boynton Place # 2
BOOK 59 FLOOD MAP # 1908
FLOOD ZONE B ZONING RS
QUAD # 35
ZIP CODE 33437
DATE 10/87

TRACT "ONE"
TO BE REPLATTED PRIOR TO DEVELOPMENT

TRACT "L-3"
WATER MANAGEMENT TRACT AND
DRAINAGE EASEMENT
TO BE MAINTAINED BY SUN VALLEY MASTER
ASSOCIATION, INC., WITHOUT RECOURSE TO
PALM BEACH COUNTY, FLORIDA.

MatchLine
(See Sheet 3 Of 4)



- Legend:**
- INDICATES PERMANENT REFERENCE MONUMENT (P.R.M.)
 - INDICATES PERMANENT CONTROL POINT (P.C.P.)
 - D.E. INDICATES DRAINAGE EASEMENT.
 - U.E. INDICATES UTILITY EASEMENT.
 - L.M.E. INDICATES LAKE MAINTENANCE EASEMENT

0498-005

59/193

BENCH MARK
LAND SURVEYING & MAPPING, INC.
1101 W. BLUE HERON BOULEVARD, SUITE 121, RIVIERA BEACH, FLORIDA 33415

Record Plat
Greater Boynton Place
Plat No. 2

OWN	CH	DATE	10/87	WD	
SCALE	1"=40'	SIZE	L	PS	BY
					BY

This instrument was prepared by Wm. R. Van Campen, R.L.S., in
and for the offices of Bench Mark Land Surveying & Mapping,
Inc., 4152 W. Blue Heron Boulevard, Suite 121, Riviera Beach, FL.

E. LINE UNL. SECTION 26
S. 00°53'33" W. 139.64'
L. Lake Worth Drainage District Equalizing Canal E-3 (P.B. 518)