

PART OF BOCA COURT P.U.D.

# BOCA GLADES BAPTIST CHURCH

A PORTION OF SECTION 25, TOWNSHIP 47 SOUTH, RANGE 41 EAST, PALM BEACH COUNTY, BEING A REPLAT OF A PORTION OF TRACTS 50 AND 51 OF FLORIDA FRUIT LANDS COMPANY'S SUBDIVISION NO. 2, A PLAT OF WHICH IS ON FILE IN PLAT BOOK 1, PAGE 102 OF THE PUBLIC RECORDS OF PALM BEACH COUNTY, FLORIDA

WALTER A. CORNNELL INC. CONSULTING ENGINEERS & LAND SURVEYORS PALM BEACH COUNTY, FLORIDA  
JANUARY, 1988 SHEET 2 OF 2

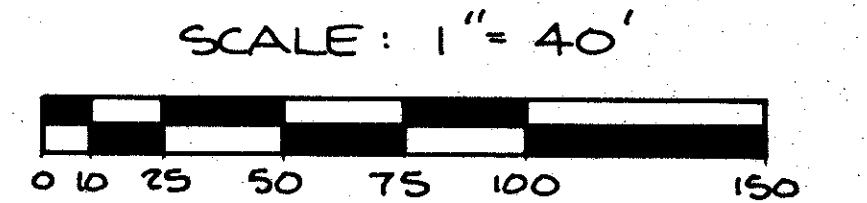
Notice: There may be additional restrictions that are not recorded on this plat that may be found in the Public Records of this county.

Surveyor's Notes:

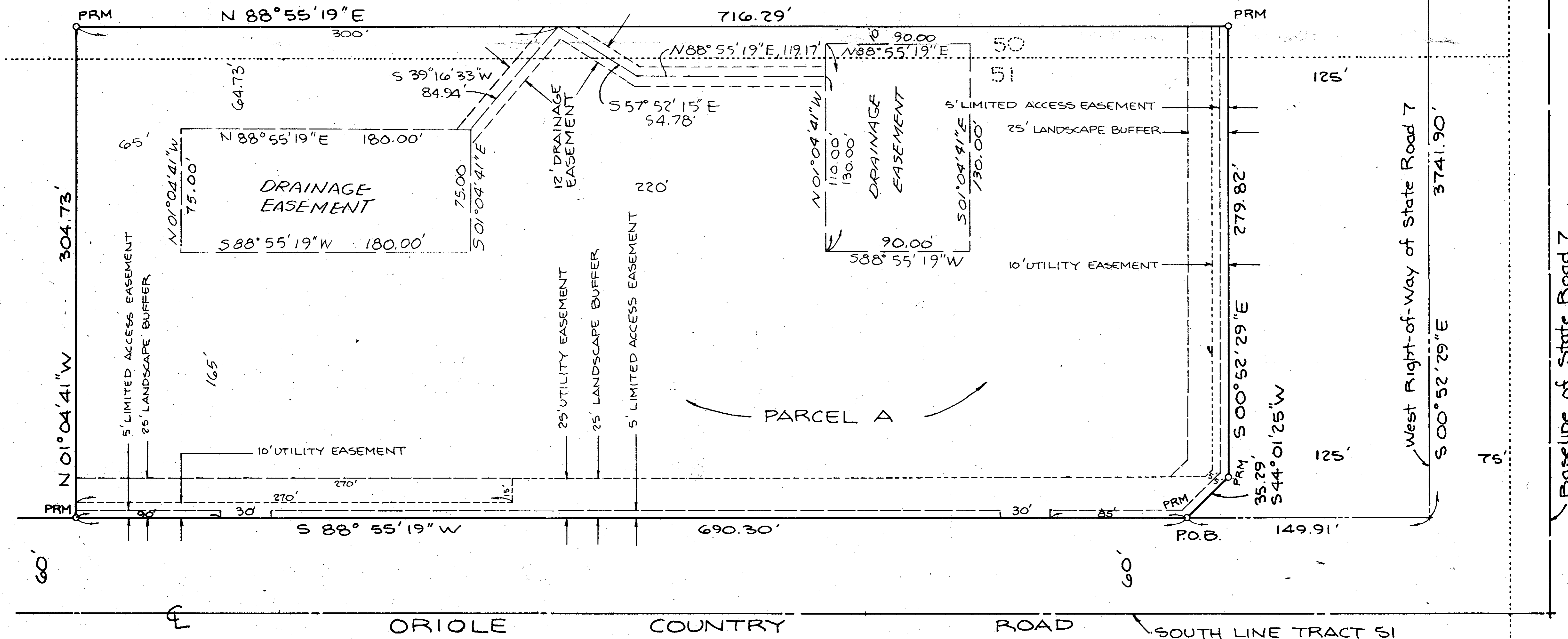
1. PRM denotes Permanent Reference Monument.
2. Bearings shown hereon based on assumed datum with the North boundary of Section 25 being S 87°08'00" W.
3. No buildings or any kind of construction shall be placed on utility- or drainage easements.
4. No structures, trees, or shrubs shall be placed on drainage easements.
5. Approval of landscaping on utility easements other than sewer and water, shall be only with the approval of all utilities occupying same.
6. Where drainage and utility easements cross, the drainage has preference.
7. Building setbacks are as per approved site plan.
8. This instrument was prepared by Kevin M. Cornell in the offices of Walter A. Cornell, Inc., 22 SE 4th Street, Boca Raton, Florida.

FLORIDA FRUIT LANDS COMPANY'S  
SUBDIVISION NO. 2  
PB. 1 PAGE 102

P.O.C. Northeast corner Section 25, Township 47 South, Range 41 East  
North boundary Section 25  
S 87°08'00" W  
65.25'



FLORIDA FRUIT LANDS COMPANY'S  
SUBDIVISION NO. 2  
PB. 1 PAGE 102



BOCA TRAILS PLAT NO. 1  
PB. 32 PAGES 126-127

FLORIDA FRUIT LANDS  
COMPANY'S SUB. NO. 2  
PB. 1 PAGE 102

05/3-001

Ret. 86-58

59/191

Boca Glades Baptist Church

59/191  
 BOCA GLADES BAPTIST CHURCH  
 59/191  
 FILED TO BE A/C  
 05/03/88  
 33433  
 PUD NAME