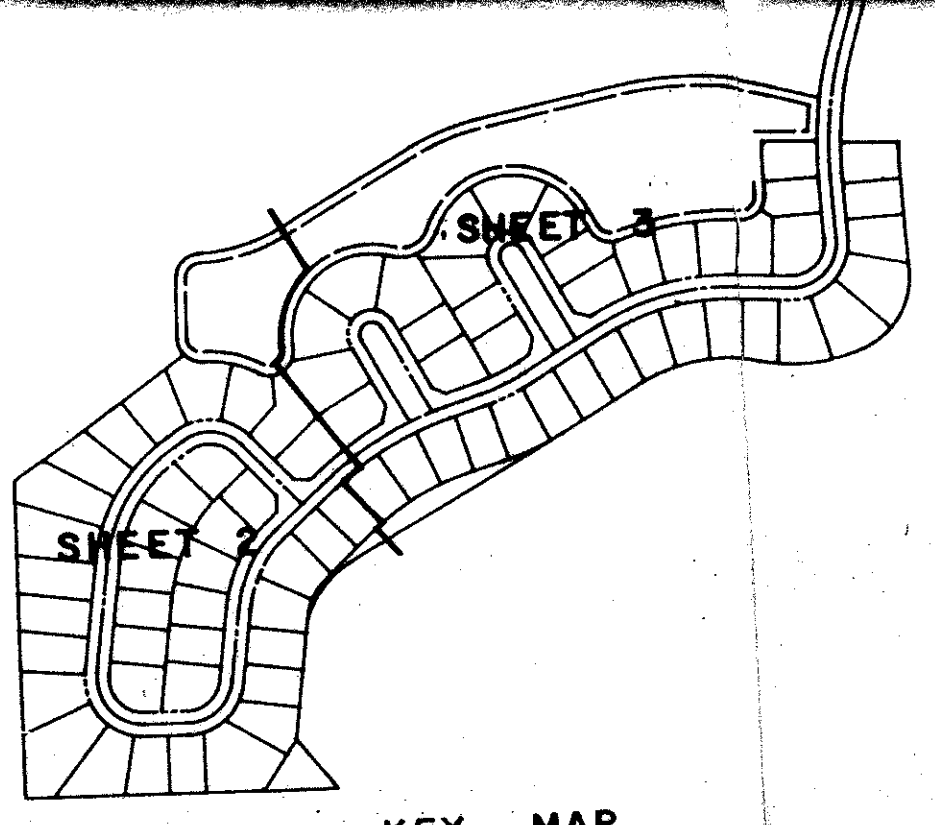
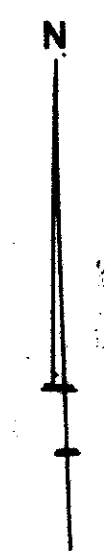


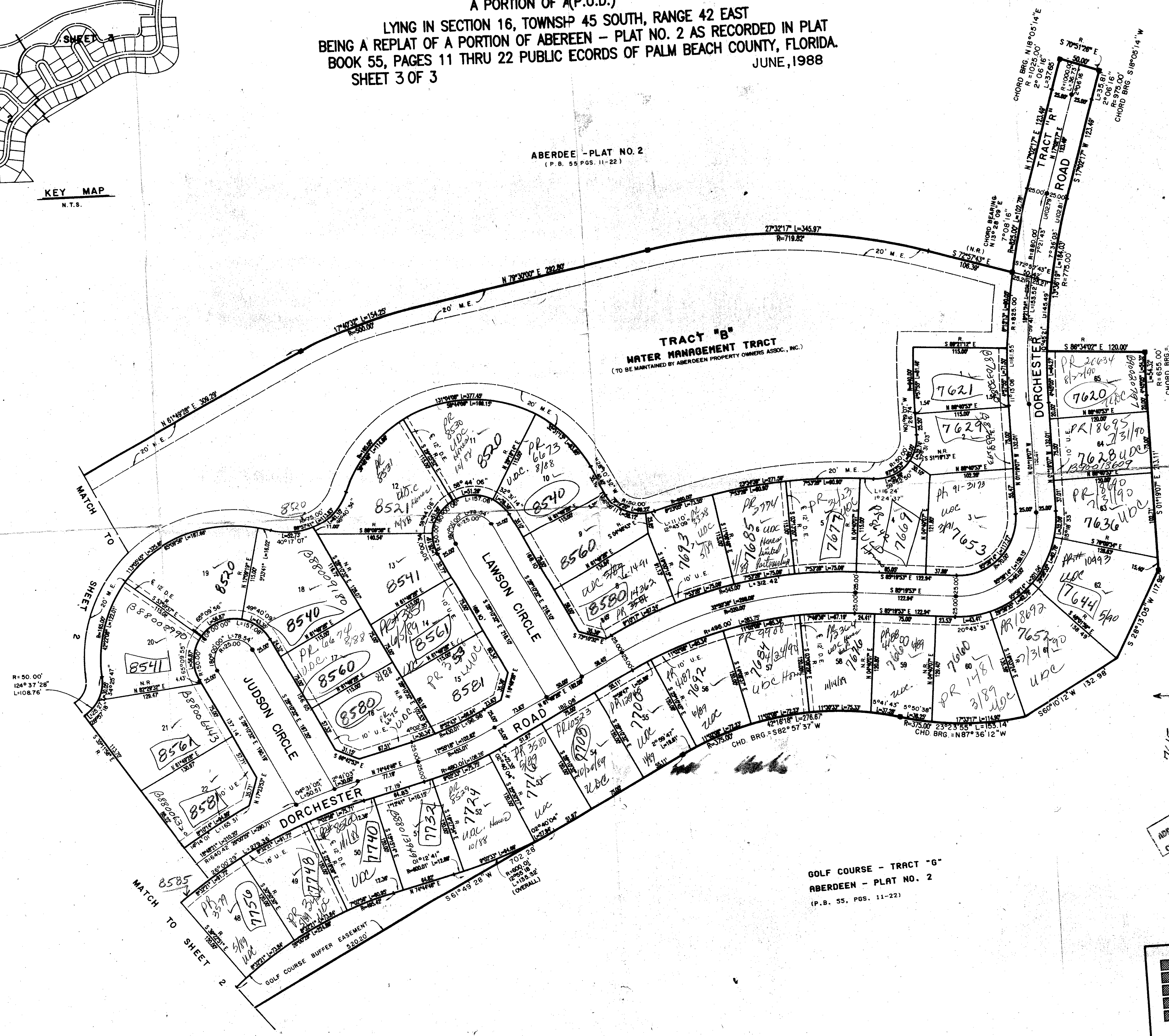
ABERDEEN - PLAT NO. 2

A PORTION OF A(P.U.D.)
LYING IN SECTION 16, TOWNSHIP 45 SOUTH, RANGE 42 EAST
BEING A REPLAT OF A PORTION OF ABERDEEN - PLAT NO. 2 AS RECORDED IN PLAT
BOOK 55, PAGES 11 THRU 22 PUBLIC RECORDS OF PALM BEACH COUNTY, FLORIDA.
JUNE, 1988
SHEET 3 OF 3



KEY MAP
N.T.S.

ABERDEEN - PLAT NO. 2
(P.B. 55 PGS. 11-22)



STATE OF FLORIDA
COUNTY OF PALM BEACH
This Plat was filed for record at
M. this day of 19
and duly recorded in Plat Book No.
on Page
John B. Dunkle, Clerk of the Circuit Court
By _____ D.C.

ABERDEEN PLAT NO. 2
(P.B. 55, PGS. 11-22)

145/82
SUBDIVISOR: *Chadwick*
PAGE 180
BOOK 57 FLOOD HAZ + 185A
ZONING: *RT*
ZIP CODE: 33437
P.L.D. NAME: *pub*

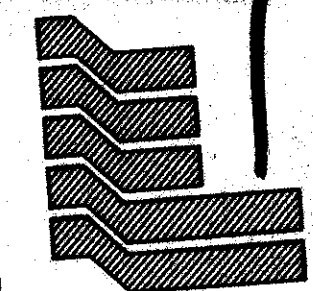
GOLF COURSE - TRACT "G"
ABERDEEN - PLAT NO. 2
(P.B. 55, PGS. 11-22)

ADD. BY *see*
CHECKED BY *see*

GRAPHIC SCALE 1"=60'

59/180

Pet. 80-153
0270-011

**Landmark Surveying & Mapping**
1850 FOREST HILL BOULEVARD
PH. (305)433-5405 SUITE 100 W.P.B. FLORIDA
ABERDEEN - PLAT NO. 9