

# PLAT OF GOLF COLONY A PART OF PIPERS GLEN, A P.U.D.

BEING A REPLAT OF TRACT 'B', TOGETHER WITH PORTIONS OF TRACTS 'G' AND '3' OF PIPERS GLEN PLAT NO. 1  
(P.B. 43, PGS. 97 THROUGH 101), LYING IN SECTION 3, TOWNSHIP 46 SOUTH, RANGE 42 EAST.  
PALM BEACH COUNTY, FLORIDA

MARCH 1988

COPY RIGHT 1987 BY SHALLOWAY, INC.  
THIS DRAWING IS PROVIDED FOR INFORMATIONAL  
PURPOSES ONLY, UNLESS SIGNED AND SEALED BY A  
REGISTERED PROFESSIONAL SURVEYOR REPRESENTING  
SHALLOWAY, INC.

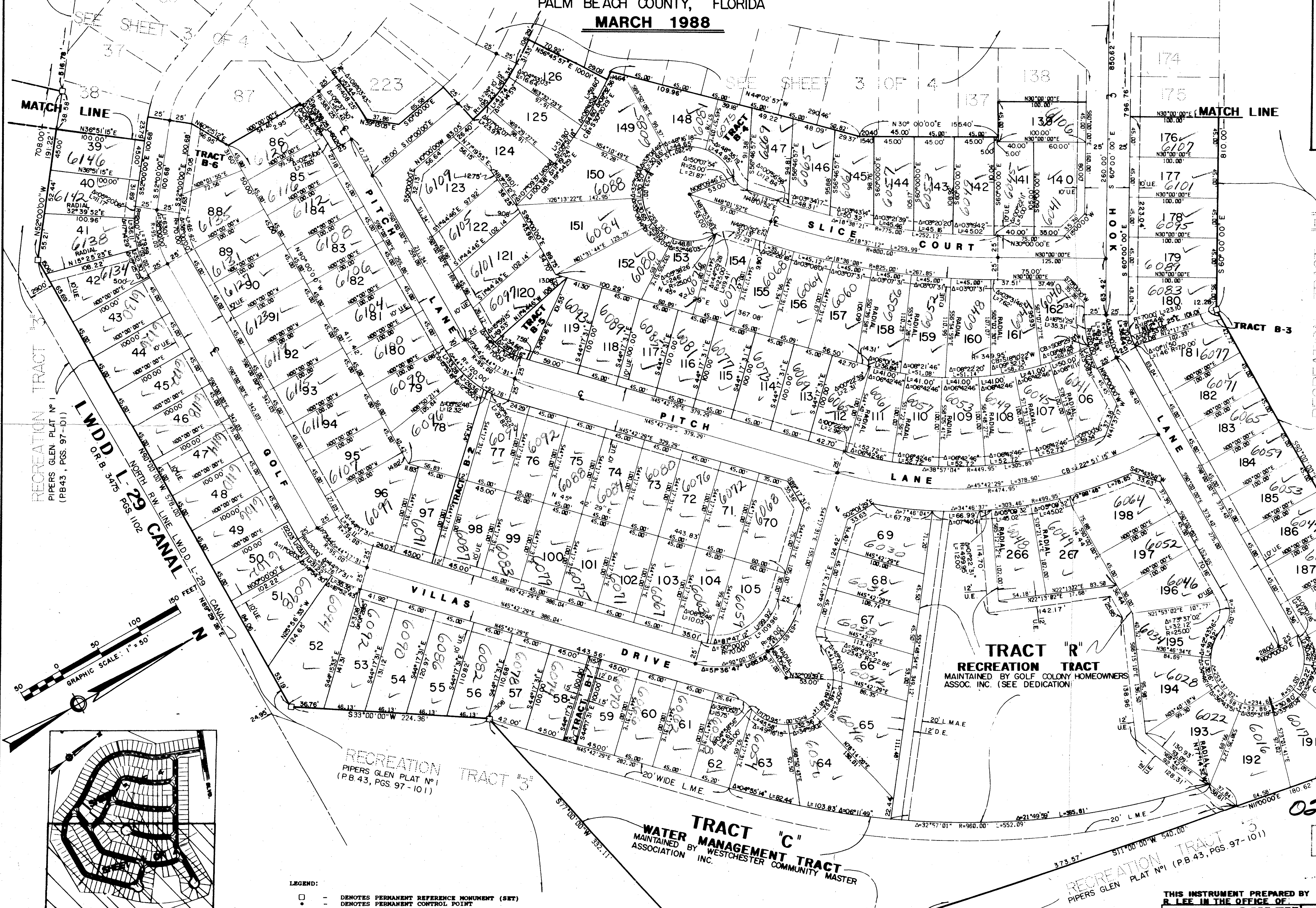
116

STATE OF FLORIDA  
COUNTY OF PALM BEACH

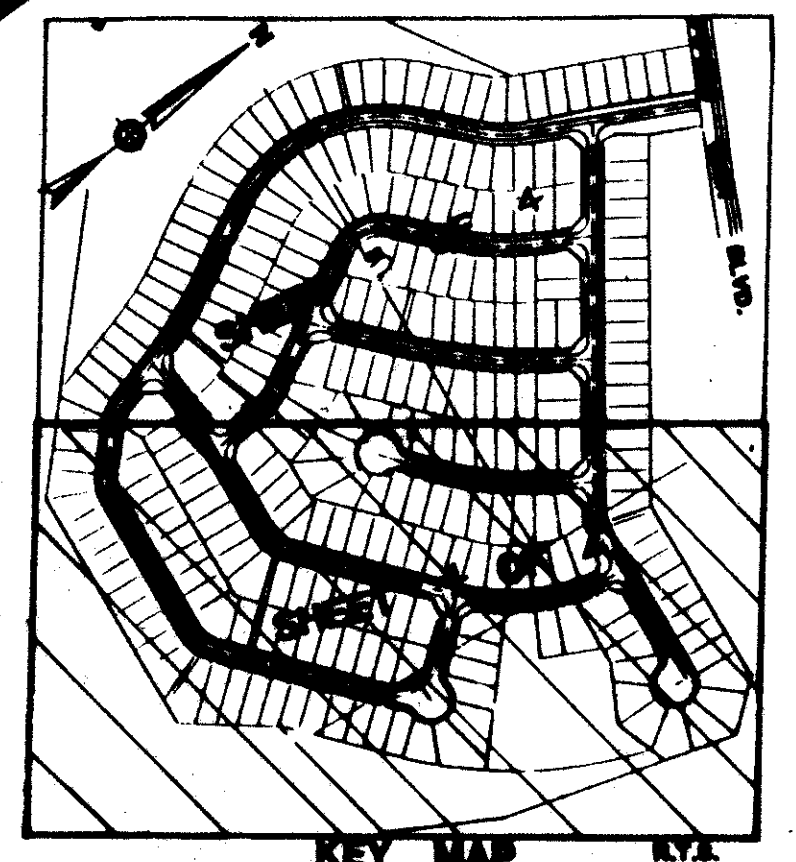
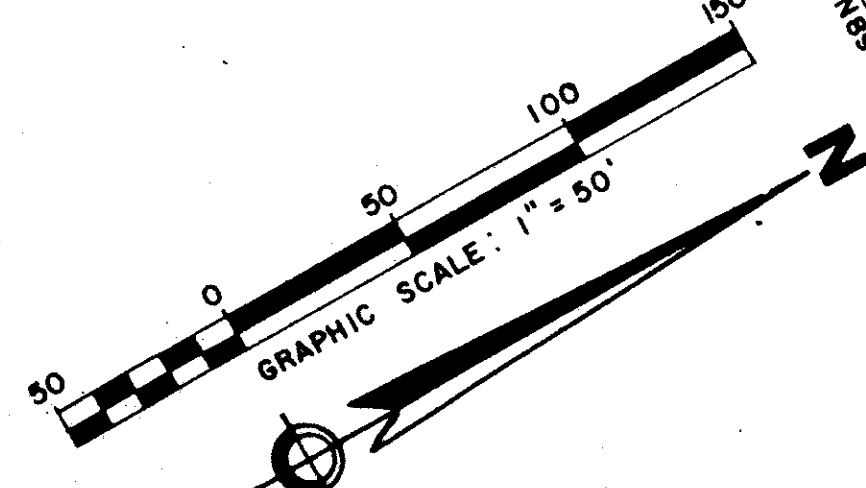
This instrument was filed for  
record at \_\_\_\_\_ M. this \_\_\_\_\_  
day of \_\_\_\_\_, 19\_\_\_\_  
and duly recorded in official  
record book \_\_\_\_\_ on page \_\_\_\_\_

JIM B. DUNKLE,  
Clerk Circuit Court

BY: \_\_\_\_\_, D.C.



SUBDIVISION - Golf Colony  
BOOK 59 PAGE 116  
FLOOD ZONE 6 FLOOD MAP # 200A  
QUAD # 34 ZONING RT  
SE 80-212 PUD ZIP CODE 33413  
PUD NAME PIPERS GLEN PUD  
TAZ 456



- LEGEND:
- DENOTES PERMANENT REFERENCE MONUMENT (SET)
  - DENOTES PERMANENT CONTROL POINT
  - U.E. DENOTES UTILITY EASEMENT
  - D.E. DENOTES DRAINAGE EASEMENT
  - L.M.E. DENOTES LAKE MAINTENANCE EASEMENT
  - L.M.A.E. DENOTES LAKE MAINTENANCE ACCESS EASEMENT
  - U.S.S.E. DENOTES UTILITY & SAFE SITE EASEMENT

TRACT "C"

WATER MANAGEMENT TRACT  
MAINTAINED BY WESTCHESTER COMMUNITY MASTER  
ASSOCIATION INC.

TRACT "R"

RECREATION TRACT  
MAINTAINED BY GOLF COLONY HOMEOWNERS  
ASSOC. INC. (SEE DEDICATION)

0298-010

THIS INSTRUMENT PREPARED BY  
R. LEE IN THE OFFICE OF  
**SHALLOWAY**  
REGISTERED PROFESSIONAL SURVEYOR

59/116

DATE 10-28-87  
DRAWN A.R.  
CHECKED G.R.  
JOB NO. 86077

GOLF COLONY