

BREAKERS WEST PLAT NO. 15

"THE CLUBS"

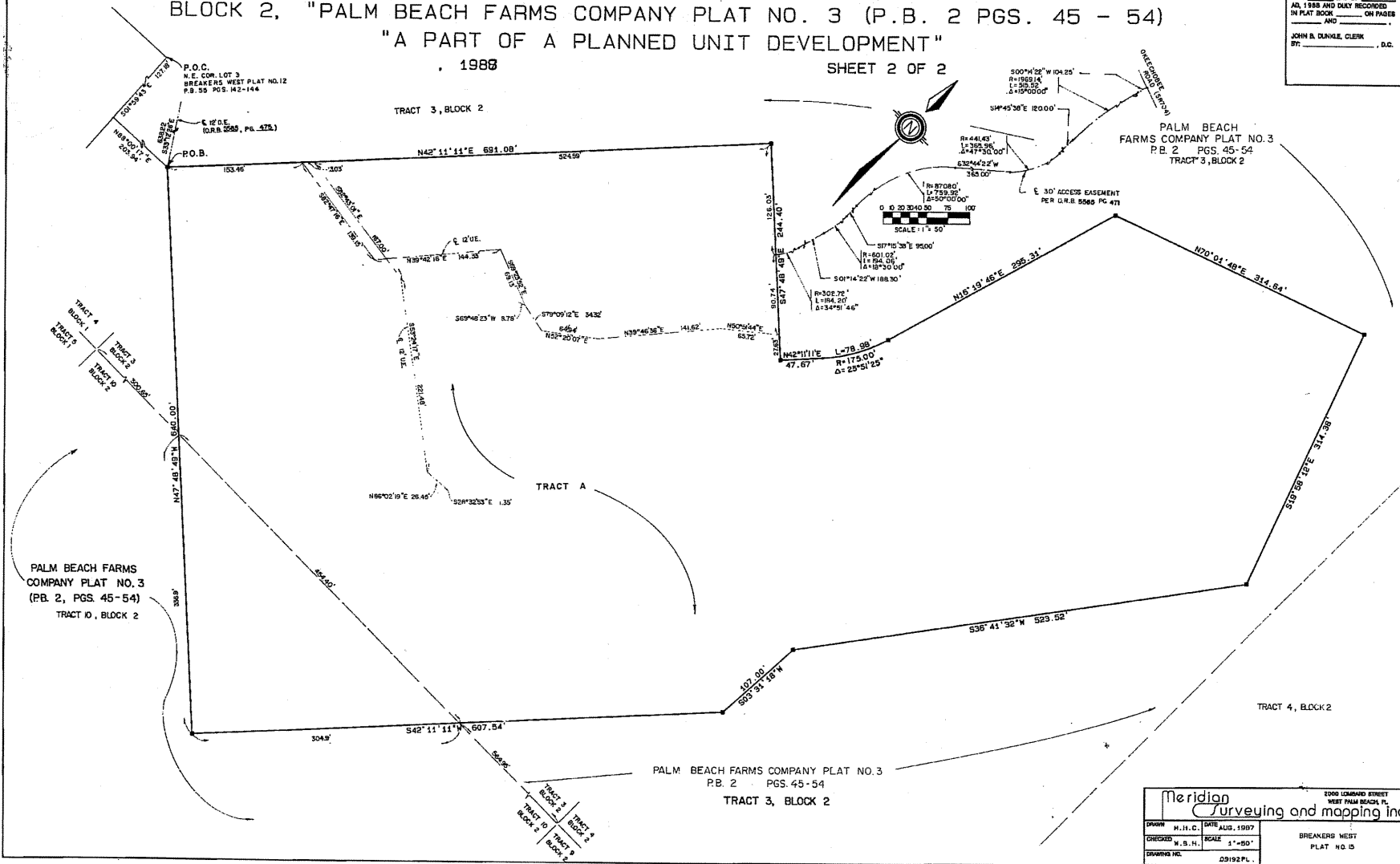
SITUATE IN SECTION 30, TOWNSHIP 43 SOUTH, RANGE 42 EAST,
 PALM BEACH COUNTY, FLORIDA, BEING A REPLAT OF A PORTION OF TRACTS 3 & 10,
 BLOCK 2, "PALM BEACH FARMS COMPANY PLAT NO. 3 (P.B. 2 PGS. 45 - 54)
 "A PART OF A PLANNED UNIT DEVELOPMENT"

1988

SHEET 2 OF 2

95

STATE OF FLORIDA
 COUNTY OF PALM BEACH
 THIS PLAT WAS FILED FOR
 RECORD
 THIS _____ DAY OF _____
 A.D. 1988 AND DULY RECORDED
 IN PLAT BOOK _____ ON PAGE(S)
 AND _____
 JOHN B. DUNKLE, CLERK
 BY _____, D.C.



Meridian
 Surveying and mapping inc.
 8000 LAMAR STREET
 WEST PALM BEACH, FL.

DRAWN	H.H.C.	DATE	AUG. 1987
CHECKED	W.B.H.	SCALE	1"=50'
DRAWING NO.	03192 PL.		

BREAKERS WEST
 PLAT NO 3