

# LANTANA HOMES PLAT 7

A PLANNED UNIT DEVELOPMENT

PALM BEACH COUNTY, FLORIDA

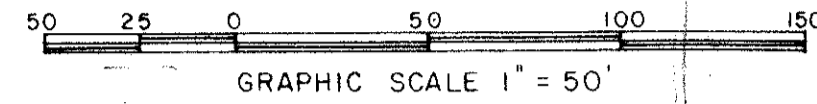
SHEET 2 OF 2

APRIL, 1988

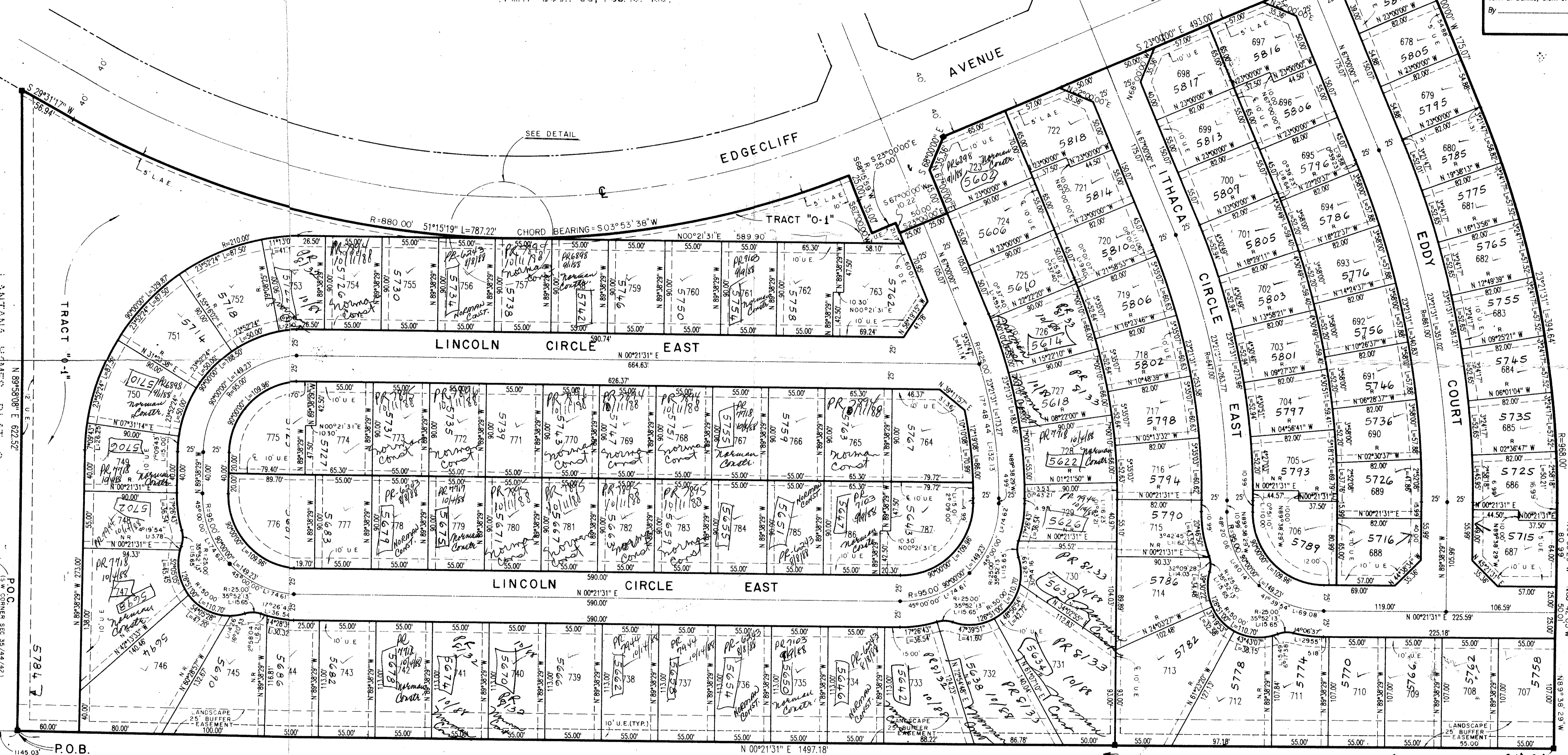
LANTANA HOMES  
PLAT 2  
(P.B. 57, PGS. 38 & 39)

# 77

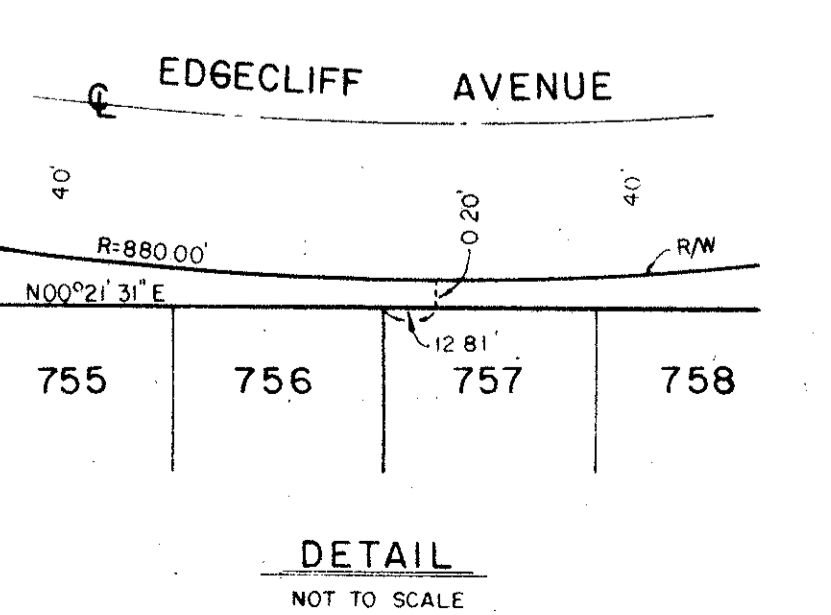
STATE OF FLORIDA  
COUNTY OF PALM BEACH  
This Plat was filed for record at \_\_\_\_\_  
M. this \_\_\_\_\_ day of \_\_\_\_\_, 19\_\_\_\_  
and duly recorded in Plat Book No. \_\_\_\_\_  
on Page \_\_\_\_\_  
John B. Dunkle, Clerk of the Circuit Court  
By \_\_\_\_\_ D.C.



LANTANA HOMES PLAT 1  
(PLAT BOOK 55, PGS. 167-169)



RECORDING INFORMATION  
BOOK 59 PAGE 80-81  
FILED IN PLAT BOOK 59 PAGE 80-81  
DATE 04-16-88  
BY [Signature]



NOTE - ALL LOTS HAVE A 7' MAINTENANCE EASEMENT SHOWN THUS.

NOT PLATTED

0421-006  
TURNOUT REQUIRED  
Collect Pet. 84-61  
59/77  
SIDEWALK REQUIRED  
LANDMARK SURVEYING & MAPPING INC.  
1850 FOREST HILL BOULEVARD  
PH. (305) 433-5405 SUITE 200 W.P.B. FLORIDA  
**LANTANA HOMES PLAT 7**