

PARKWALK - PLAT NO. 3A

A PORTION OF ABERDEEN (P.U.D.)

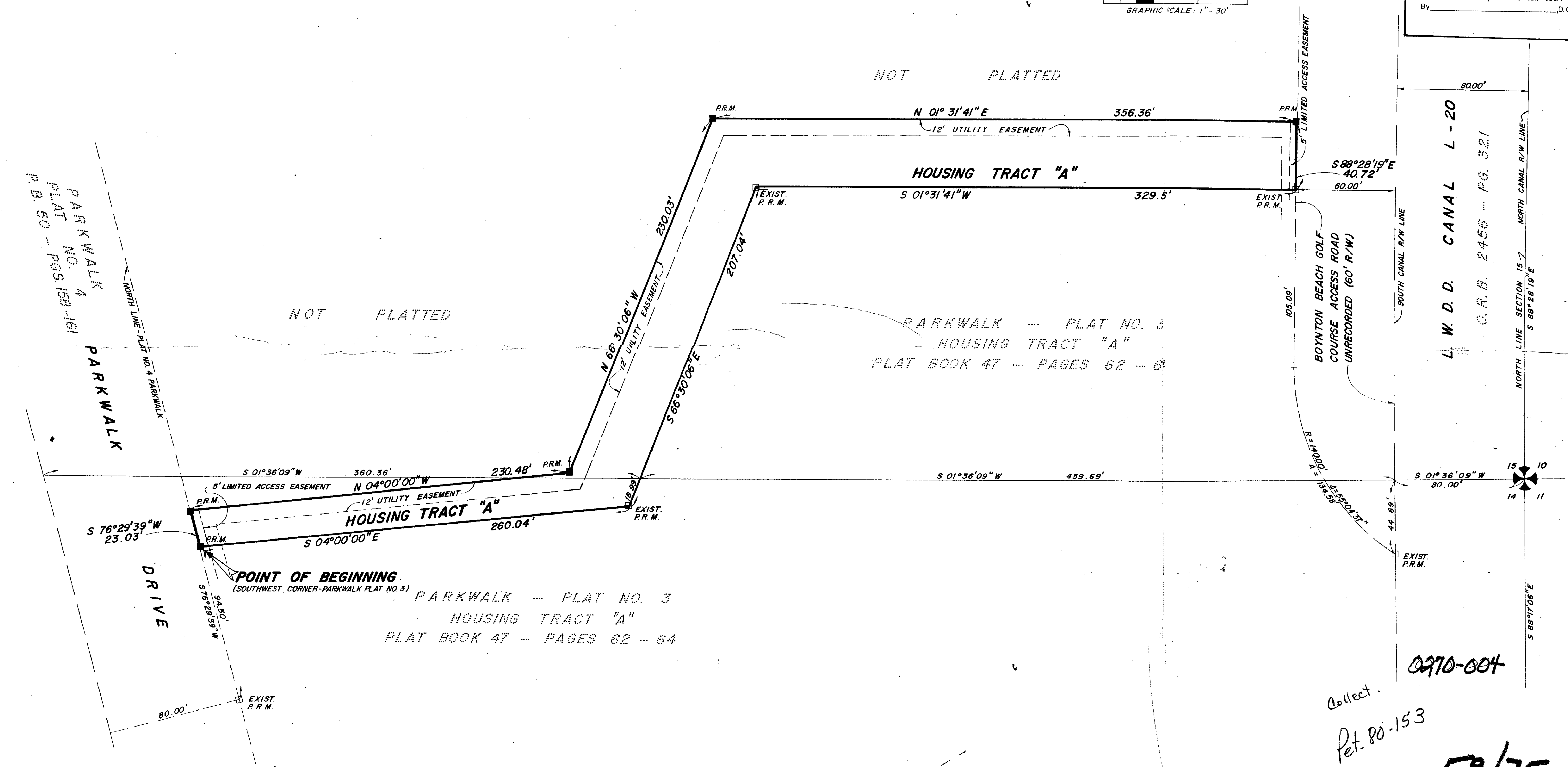
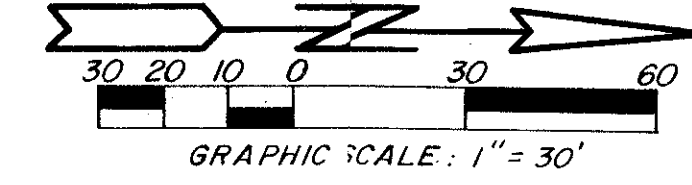
SECTIONS 14 & 15, TOWNSHIP 45 SOUTH, RANGE 42 EAST

PALM BEACH COUNTY, FLORIDA

FEBRUARY, 1988

75

STATE OF FLORIDA
 COUNTY OF PALM BEACH
 This Plat was filed for record at _____ M.
 this _____ day of _____
 19 _____, and duly recorded in Plat Book No. _____
 on page _____
 JOHN B. DUNKLE, Clerk Circuit Court
 By _____, D.C.



SUBDIVISION & PARKWALK # 3A
 BOOK 27 PAGE 15
 P. B. 46 - PGS. 164 - 168
 P. B. 50 - PGS. 159 - 161
 P. B. 80-153
 RS
 TAZ 441

Collect.
 Pet. 80-153
 0270-004
 59/75

ROSSI AND MALAVASI ENGINEERS, INC. WEST PALM BEACH, FLORIDA		PARKWALK PLAT NO. 3A IN 2 SHEETS SHEET NO. 2	
Date	FEBRUARY, 1988	Designed	R. ANDERSON
Drawn	D. FREDERICK	Scale	1" = 30'
Checked		Job No.	
Approved		File No.	
			Sheet 2 of 2