

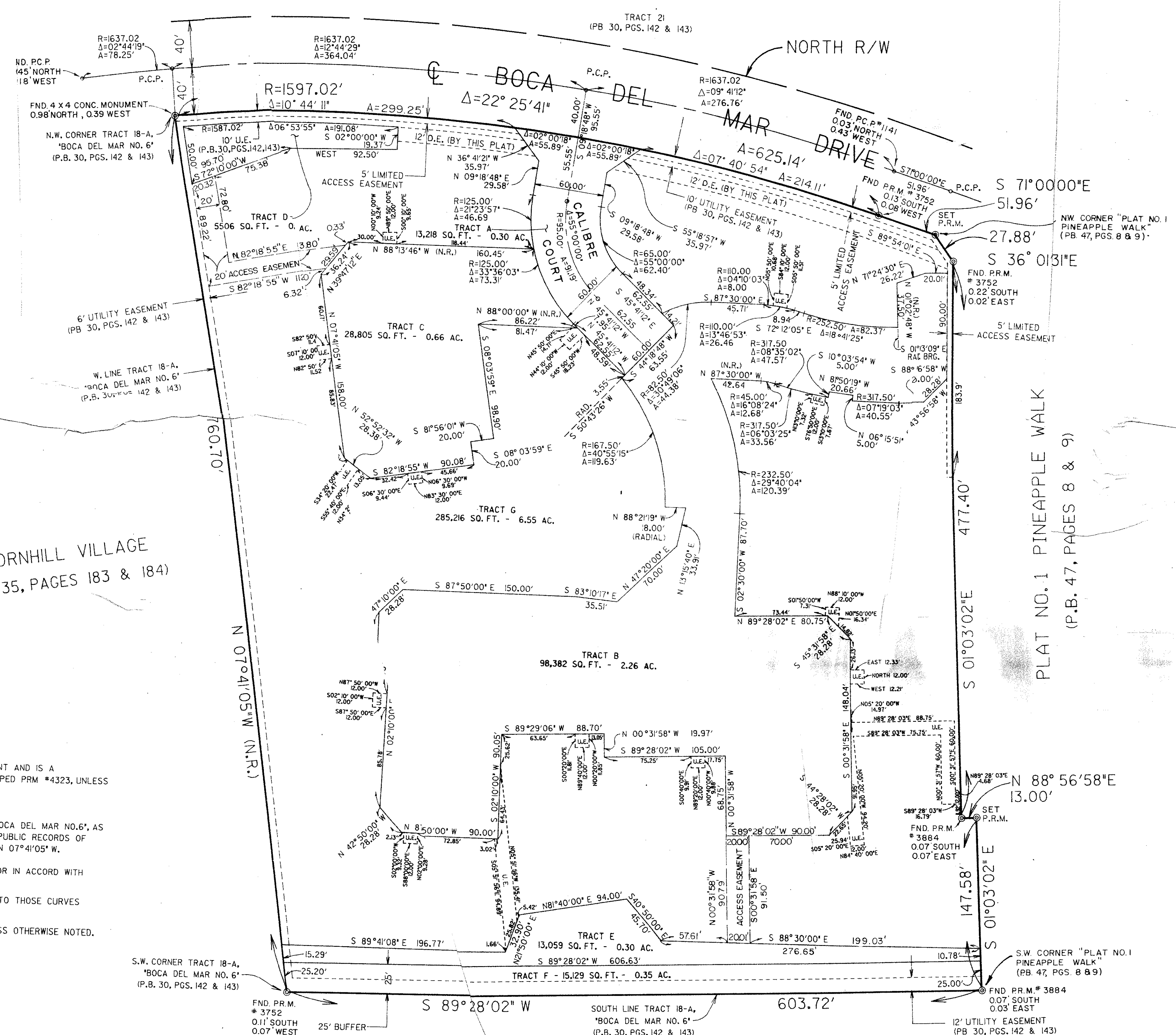
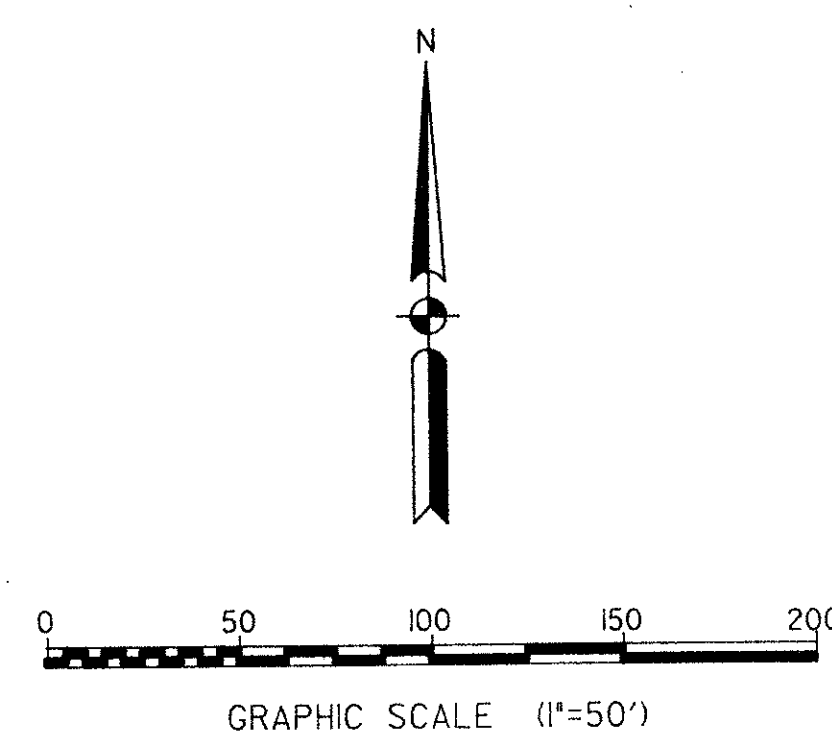
"CALIBRE COURT PLAT"

LYING IN SECTION 28, TOWNSHIP 47 SOUTH, RANGE 42 EAST,
BEING A REPLAT OF A PORTION OF TRACT 18-A, BOCA DEL MAR NO. 6, A P.U.D.
ACCORDING TO THE PLAT THEREOF, AS RECORDED IN
PLAT BOOK 30, AT PAGES 142 AND 143, OF THE PUBLIC RECORDS
OF PALM BEACH COUNTY, FLORIDA

THIS PLAT WAS FILED FOR RECORD
AT _____, THIS _____ DAY OF
_____, A.D., 1988, AND DULY
RECORDED IN PLAT BOOK _____
ON PAGES _____ THRU _____

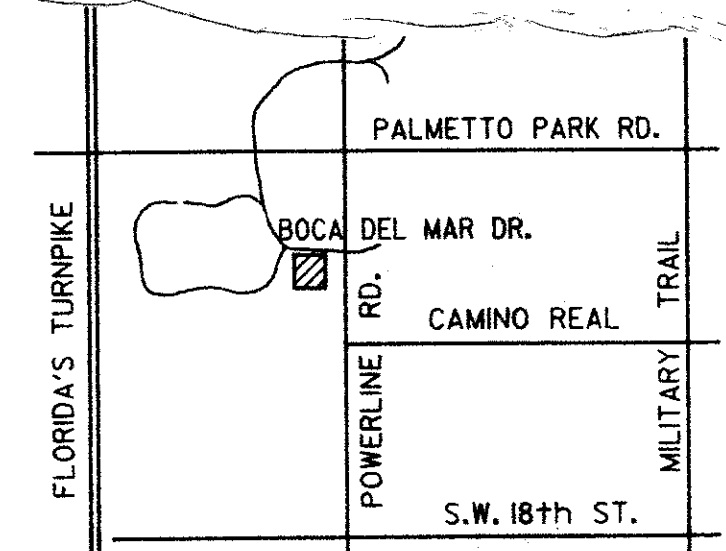
JOHN B. DUNKLE,
CLERK OF THE CIRCUIT COURT

BY: _____, DEPUTY CLERK



PREPARED BY:
SUSAN M. MARLEY
KEITH AND SCHNARS, P.A.
ENGINEERS - PLANNERS - SURVEYORS
6500 NORTH ANDREWS AVENUE
FORT LAUDERDALE, FLORIDA 33309
(305) 776-1616
JULY, 1987

THORNHILL VILLAGE
(P.B. 35, PAGES 183 & 184)



LOCATION MAP
NOT TO SCALE

SURVEY NOTES:

1. P.R.M. INDICATES SET PERMANENT REFERENCE MONUMENT AND IS A 6" DIA. X 24" CONCRETE MONUMENT WITH BRASS DISC STAMPED PRM #4323, UNLESS OTHERWISE NOTED.
2. SURVEY DATA IN FIELD BOOK D118.
3. BEARINGS SHOWN HEREON ARE BASED ON THE PLAT OF "BOCA DEL MAR NO. 6," AS RECORDED IN PLAT BOOK 30, PAGES 142 AND 143 OF THE PUBLIC RECORDS OF PALM BEACH COUNTY, FLORIDA, WEST LINE TRACT 18-A IS N 07°41'05" W.
4. THE DESCRIPTION HEREON WAS PREPARED BY THE SURVEYOR IN ACCORD WITH INFORMATION SUPPLIED BY THE CLIENT.
5. ALL LINES WHICH INTERSECT CURVES UNLESS ARE RADIAL TO THOSE CURVES OTHERWISE NOTED. (N.R.) DENOTES NON-RADIAL.
6. P.C.P. INDICATES SET PERMANENT CONTROL POINT UNLESS OTHERWISE NOTED.
7. U.E. INDICATES UTILITY EASEMENT.

SURVEY NOTES:

THERE MAY BE ADDITIONAL RESTRICTIONS THAT ARE NOT RECORDED ON THIS PLAT THAT MAY BE FOUND IN THE PUBLIC RECORDS OF THIS COUNTY.

AREA TABULATIONS:

TRACT A	13,218 SQ. FT.	0.30 ACRES
TRACT B	98,382 SQ. FT.	2.26 ACRES
TRACT C	28,805 SQ. FT.	0.66 ACRES
TRACT D	5,506 SQ. FT.	0.13 ACRES
TRACT E	13,059 SQ. FT.	0.30 ACRES
TRACT F	15,129 SQ. FT.	0.35 ACRES
TRACT G	285,216 SQ. FT.	6.55 ACRES
TOTAL	459,311 SQ. FT.	10.54 ACRES

0205-009

Duplicate 2/18/92

CAMINO REAL CENTRE
(P.B. 33, PAGES 51 & 52)