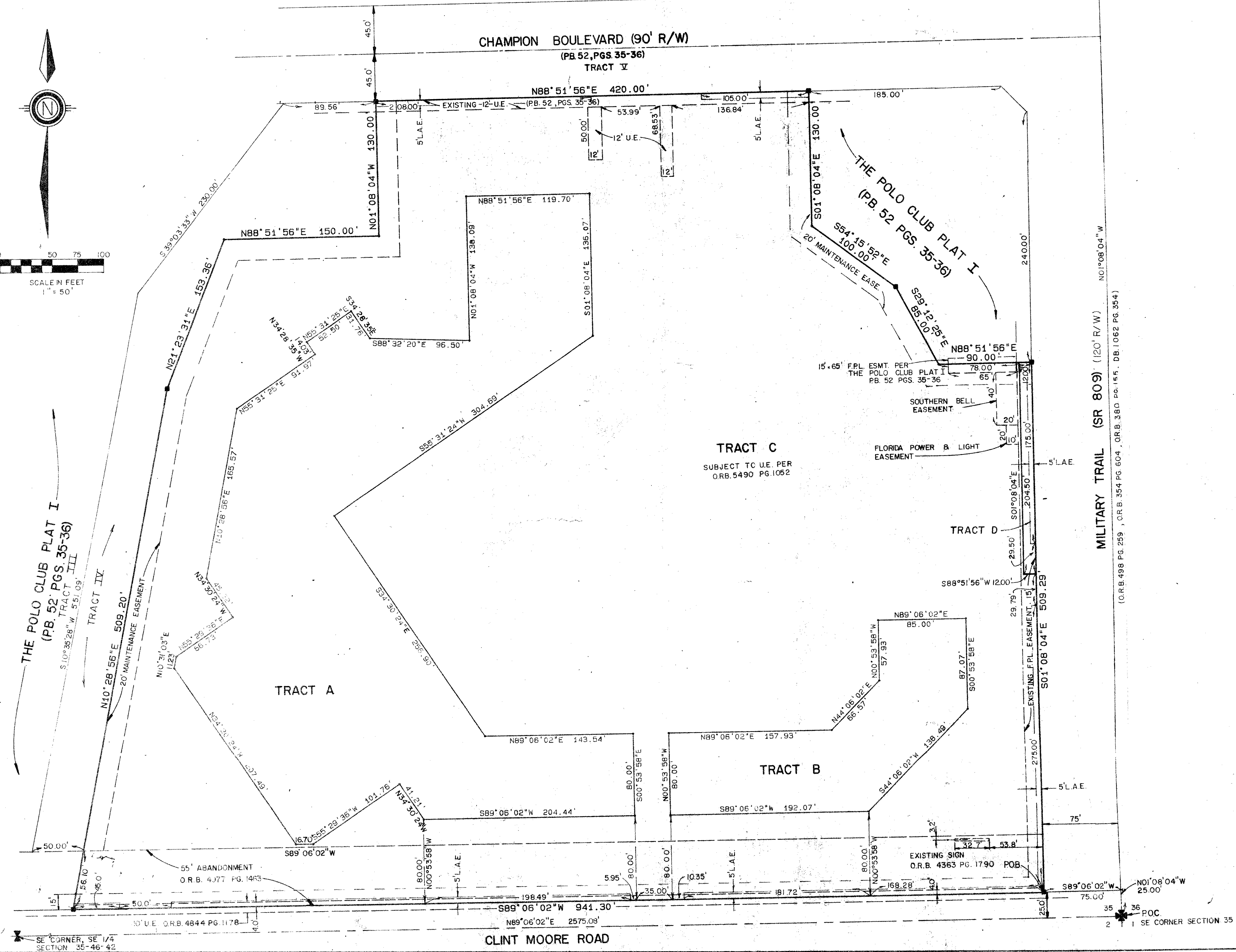
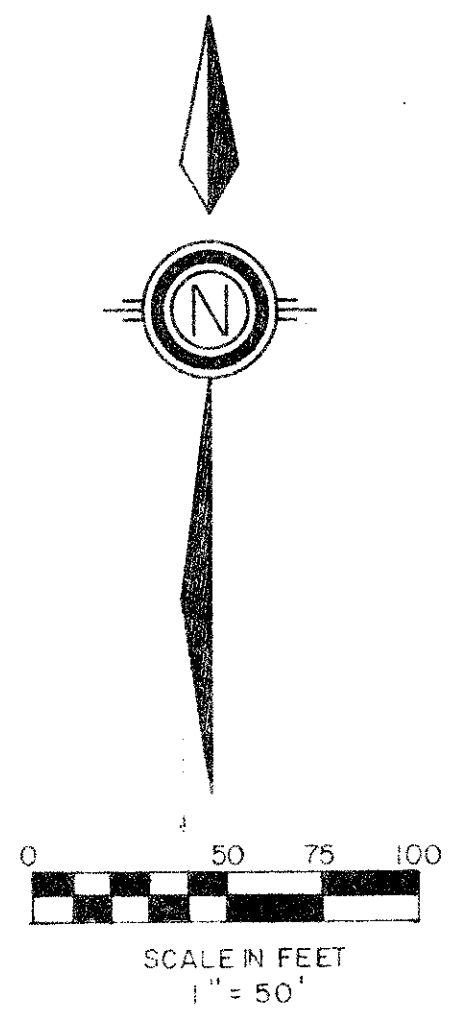


# THE POLO CLUB SHOPS

BEING A REPLAT OF A PORTION OF TRACT IV, "THE POLO CLUB PLAT I"  
SITUATE IN SECTION 35, TOWNSHIP 46 SOUTH, RANGE 42 EAST  
PALM BEACH COUNTY, FLORIDA  
1987 SHEET 2 OF 2

STATE OF FLORIDA  
COUNTY OF PALM BEACH  
THIS PLAT WAS FILED FOR  
RECORD THIS DAY OF  
AD, 1988 AND DULY RECORDED  
IN PLAT BOOK ON PAGES  
AND  
JOHN B. DUNKLE, CLERK  
BY: , D.C.



SUBDIVISION \*  
BOOK 57  
FLOOR 20  
QUAD \* 38  
SE 86-90  
POD NAME  
TAZ 601  
CG  
33/43

0436-001

59/42

Meridian  
Surveying and Mapping Inc.  
2000 LOMBARD STREET  
WEST PALM BEACH, FL.

DRAWN	M.H.C.	DATE	JAN 1987
CHECKED	M.A.M.	SCALE	1" = 50'
DRAWING NO.	86-P-897	THE POLO CLUB SHOPS	