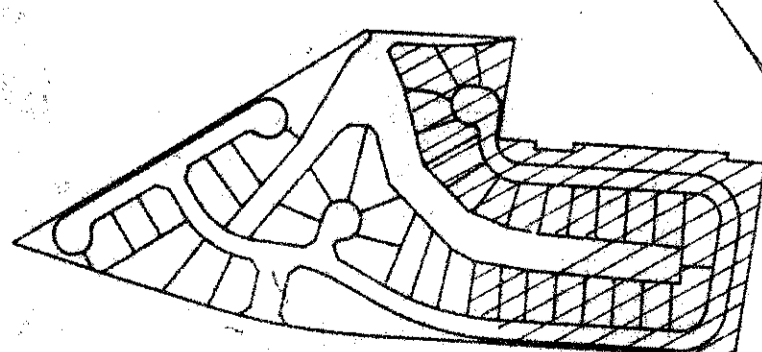
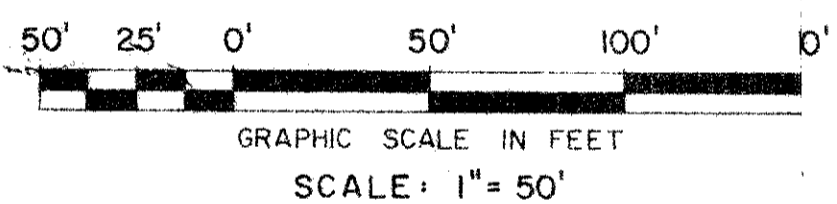
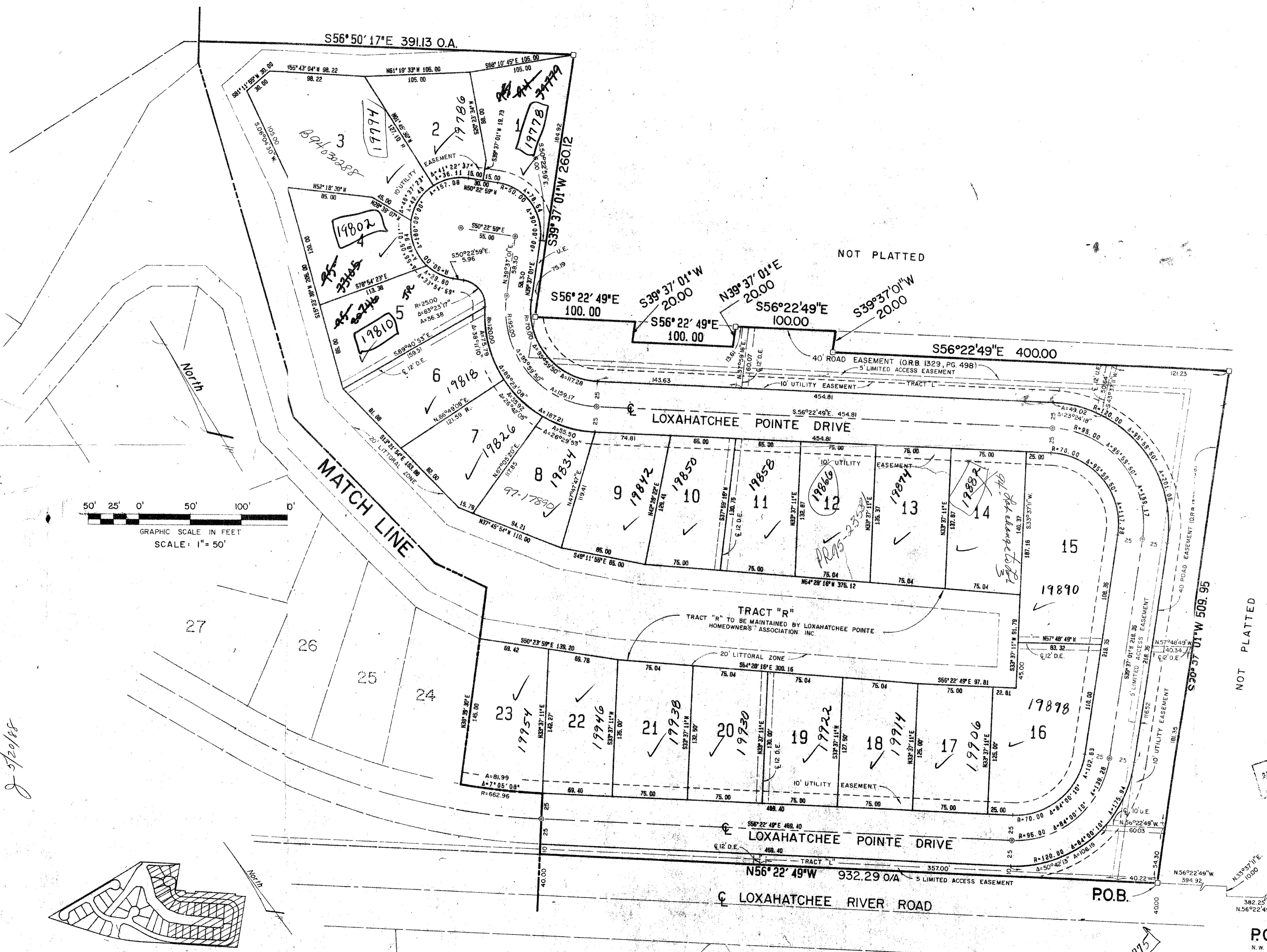


NORTH FORK LOXAHATCHEE RIVER

S56°50'17"E 391.13 O.A.



SUBDIVISION: *Imperial Woods*  
 BOOK: *39*  
 FLOOR PLANS: *RS 33158*  
 QUAD: *20*  
 SE  
 PUD NAME: *TAZ 16*

PLAT OF IMPERIAL WOODS  
 (P.B. 39, PGS. 141-142)

0530-001

59/26

PLAT OF  
**LOXAHATCHEE POINTE**

JUPITER, FLORIDA

**WS WALLACE SURVEYING CORPORATION**  
 3175 ALTERNATE A1A, LAKE PARK, FLORIDA 33403 • 305/942-4233

FIELD	JOB NO. 87-1354	F.B. PG.
OFFICE R.M.R.	DATE 1987	DWG. NO. 87-1354
C.K.D. W.D. JORDAN	REF 81-1543	SHEET 3 OF 5

APPROVED BY [Signature]

P.O.C.  
 N.W. CORNER LOT 1

NOT PLATTED

NOT PLATTED

NOT PLATTED