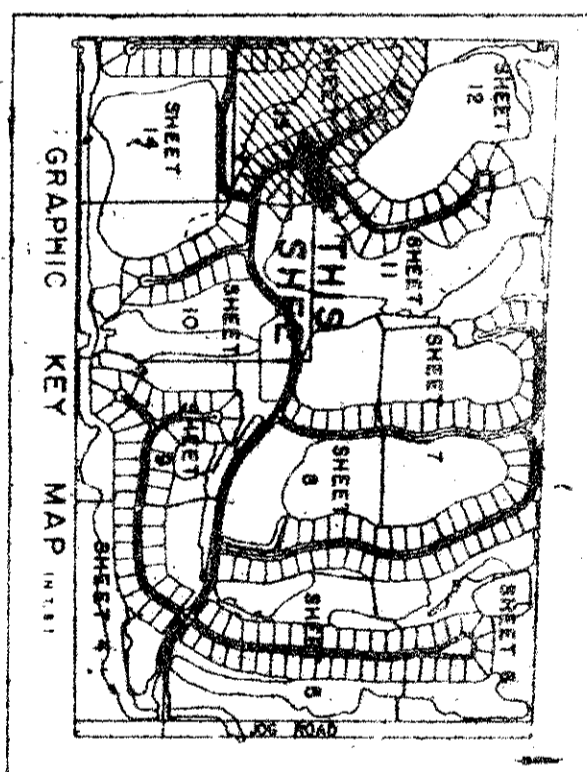
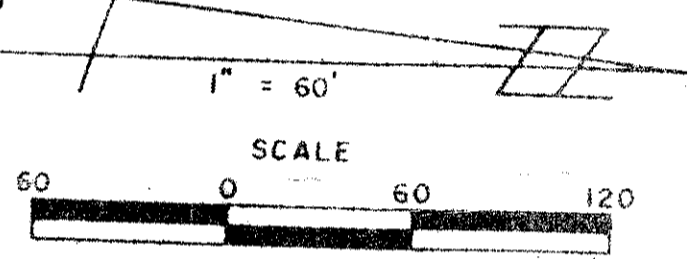


OLD MARSH GOLF CLUB
 APRIL, 1987
 SHEET 13 OF 14



PSZ 3B
 INP. 1
 Sect 28/33/41/42
 ng ju
 P. 85/42
 To L.B. Collett.

NOTES:
 * = SET PERMANENT REFERENCE MONUMENT (P.R.M.)
 ○ = PERMANENT CONTROL POINT (P.C.P.)

BEARING BASE:
 THE EAST LINE OF SECTION 33 IS TAKEN TO BE S 01°08'15" W, AND ALL OTHER BEARINGS ARE RELATIVE THEREON.

THE BUILDING SETBACKS SHALL CONFORM TO PALM BEACH COUNTY ZONING CODE.

NO BUILDINGS OR ANY KIND OF CONSTRUCTION SHALL BE PLACED ON UTILITY OR DRAINAGE EASEMENTS.

NO STRUCTURES, TREES OR SHRUBS SHALL BE PLACED ON DRAINAGE EASEMENTS.

APPROVAL OF LANDSCAPING ON UTILITY EASEMENTS OTHER THAN WATER OR SEWER SHALL BE ONLY WITH APPROVAL OF ALL UTILITIES OCCUPYING SAME.

WHEN DRAINAGE AND UTILITY EASEMENTS CROSS, DRAINAGE EASEMENTS SHALL TAKE PRECEDENCE.

TREES OR SHRUBS PLACED ON ANY LANDS OWNED BY THE NORTHERN PALM BEACH COUNTY WATER CONTROL DISTRICT, ON WATER MANAGEMENT EASEMENTS OR ON WATER MANAGEMENT MAINTENANCE EASEMENTS, UNLESS APPROVED, IN PERMIT FORM, BY THE SAID DISTRICT.

D.E. = DRAINAGE EASEMENT
 U.E. = UTILITY EASEMENT
 L.A.E. = LIMITED ACCESS EASEMENT
 B.L. = BASELINE
 G.C. = GOLF COURSE
 W.M.T. = WATER MANAGEMENT TRACT
 W.M.E. = WATER MANAGEMENT EASEMENT
 W.P.A. = WATER MANAGEMENT MAINTENANCE EASEMENT
 W.P.A. = WETLAND PRESERVATION AREA

TA 7-77 28033/41/42
 SUBMISSION Old Marsh G.C.
 BOOK 58 PAGE 74
 FLOOR MAP # 105B
 MAP # 42 PLANNING RE 33418
 SEE PWD
 FUD 412

ADD. BY [Signature]
 CHECKED BY [Signature]

LINDAHL, BROWNING, FERRARI & HELLSTROM, INC.
 CONSULTING ENGINEERS, PLANNERS & SURVEYORS
 P.O. BOX 727 10 CENTRAL PARKWAY SUITE 400
 AUSTIN, TEXAS 78762 STUART, FLORIDA 32909
 117 SOUTH SECOND STREET
 FORT PIERCE, FLORIDA 34940