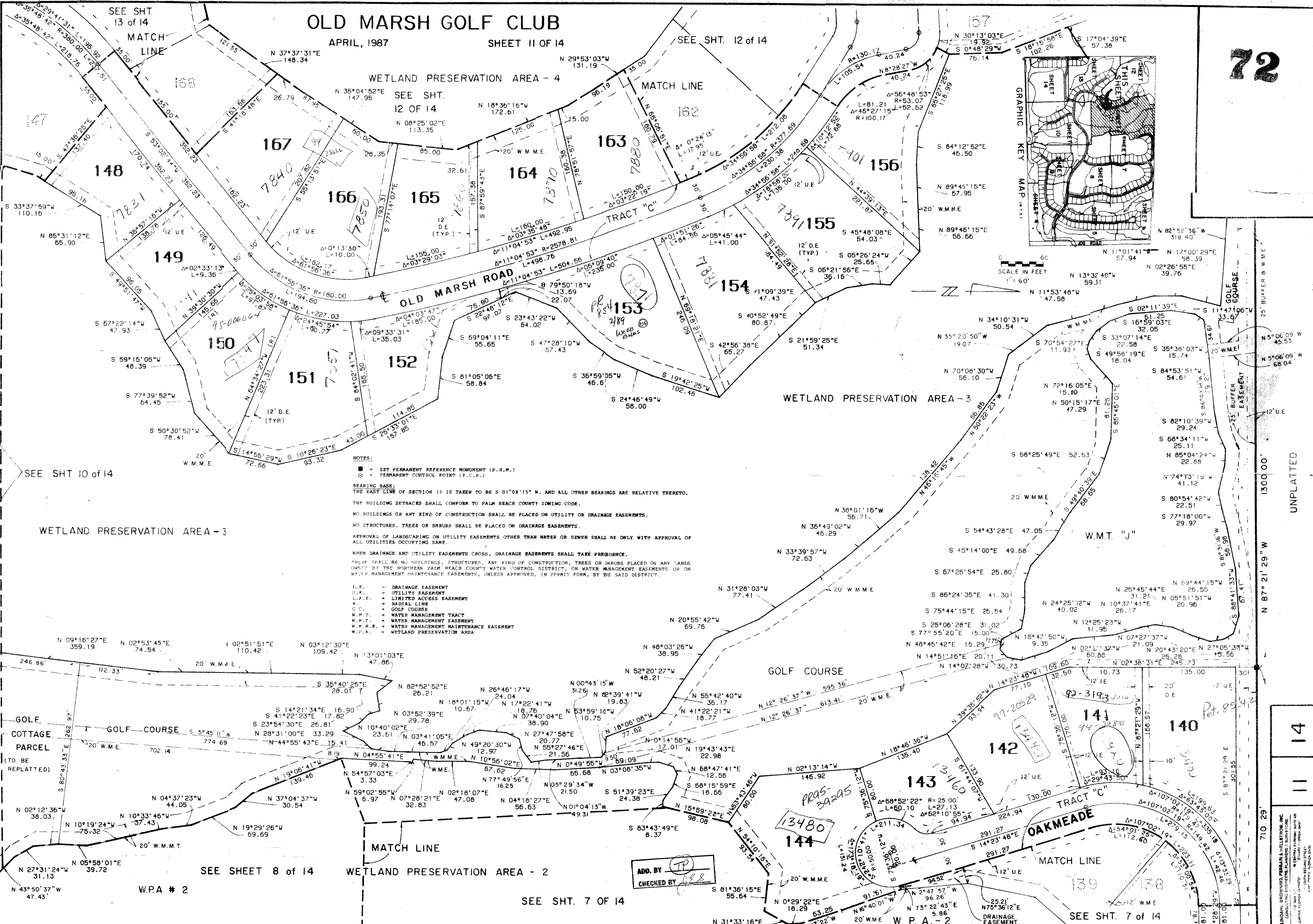


# OLD MARSH GOLF CLUB

APRIL, 1987 SHEET II OF 14

# 72



Sec 28

SUBDIVISION - Old Marsh G.C.  
 BOOK 58 PAGE 72  
 FLOOR ZONE B  
 QUAD # 42  
 SE PUD 33418  
 PUD NAME TAZ 797

**NOTES:**  
 ■ = SET PERMANENT REFERENCE MONUMENT (P.R.M.)  
 ○ = PERMANENT CONTROL POINT (P.C.P.)  
**BEARING BASE:**  
 THE EAST LINE OF SECTION 33 IS TAKEN TO BE S 01°08'15"W, AND ALL OTHER BEARINGS ARE RELATIVE THERETO.  
 THE BUILDING SETBACKS SHALL CONFORM TO PALM BEACH COUNTY ZONING CODE.  
 NO BUILDINGS OR ANY KIND OF CONSTRUCTION SHALL BE PLACED ON UTILITY OR DRAINAGE EASEMENTS.  
 NO STRUCTURES, TREES OR SHRUBS SHALL BE PLACED ON DRAINAGE EASEMENTS.  
 APPROVAL OF LANDSCAPING ON UTILITY EASEMENTS OTHER THAN WATER OR SEWER SHALL BE ONLY WITH APPROVAL OF ALL UTILITIES OCCUPYING SAME.  
 WHEN DRAINAGE AND UTILITY EASEMENTS CROSS, DRAINAGE EASEMENTS SHALL TAKE PRECEDENCE.  
 THERE SHALL BE NO BUILDINGS, STRUCTURES, ANY KIND OF CONSTRUCTION, TREES OR SHRUBS PLACED ON ANY LANDS OWNED BY THE NORTHERN PALM BEACH COUNTY WATER CONTROL DISTRICT, ON WATER MANAGEMENT EASEMENTS OR ON WATER MANAGEMENT MAINTENANCE EASEMENTS, UNLESS APPROVED, IN PERMIT FORM, BY THE SAID DISTRICT.  
**ABBREVIATIONS:**  
 D.E. = DRAINAGE EASEMENT  
 U.E. = UTILITY EASEMENT  
 L.A.E. = LIMITED ACCESS EASEMENT  
 R.L. = RADIAL LINE  
 G.C. = GOLF COURSE  
 W.M.T. = WATER MANAGEMENT TRACT  
 W.P.A. = WATER MANAGEMENT MAINTENANCE EASEMENT  
 W.P.A. = WETLAND PRESERVATION AREA

SEE SHEET 8 OF 14

SEE SHT. 7 OF 14

SEE SHT. 7 OF 14

ADD. BY TP  
 CHECKED BY [Signature]

# OLD MARSH GOLF CLUB 58/72

14  
 11  
 UNPLATTED  
 710.29'