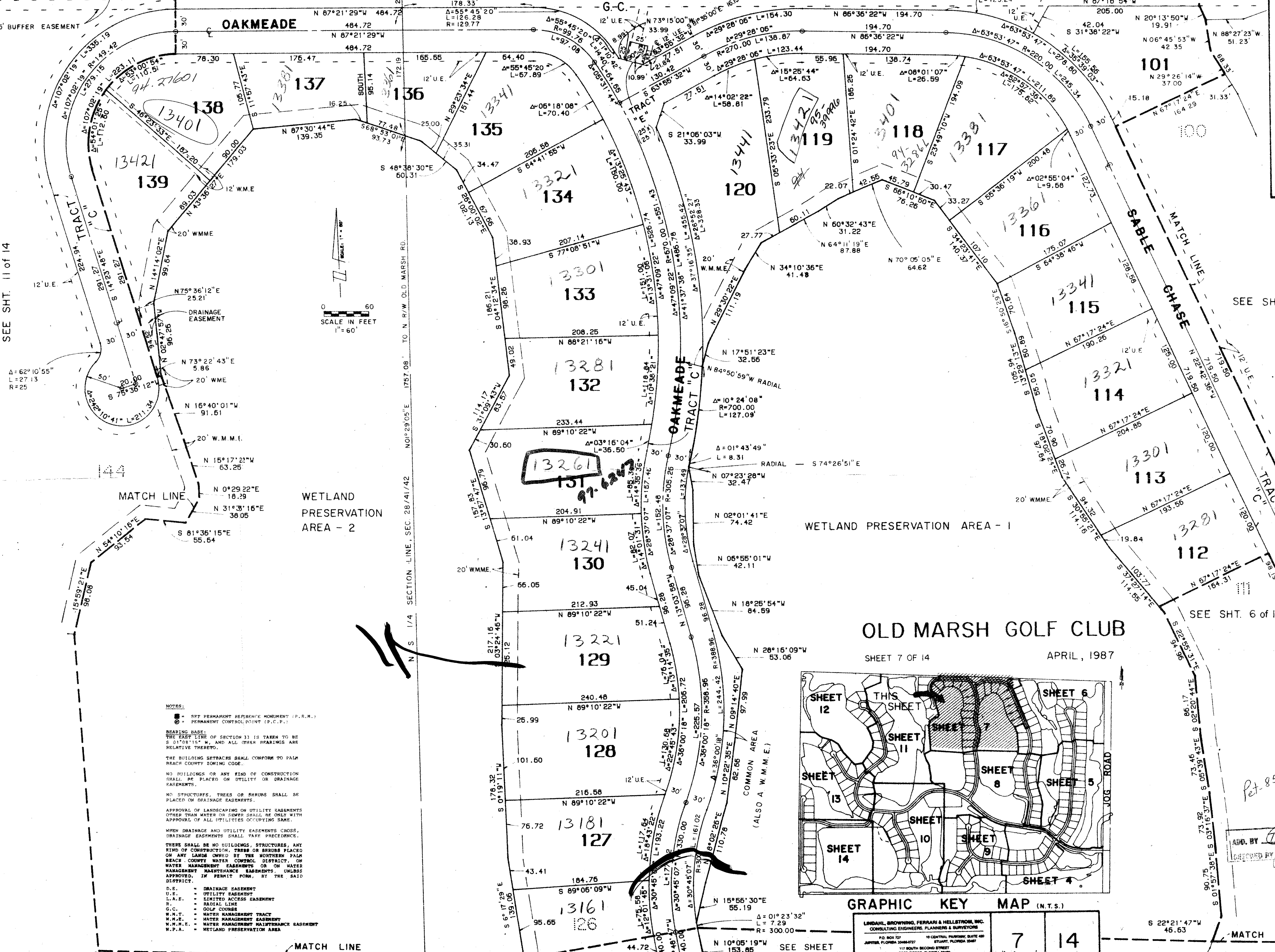


N 87° 21' 29" W 710.29' UNPLATTED N 87° 21' 29" W 1270.74



SEE SHT. 11 of 14

SEE SHT. 6 of 14

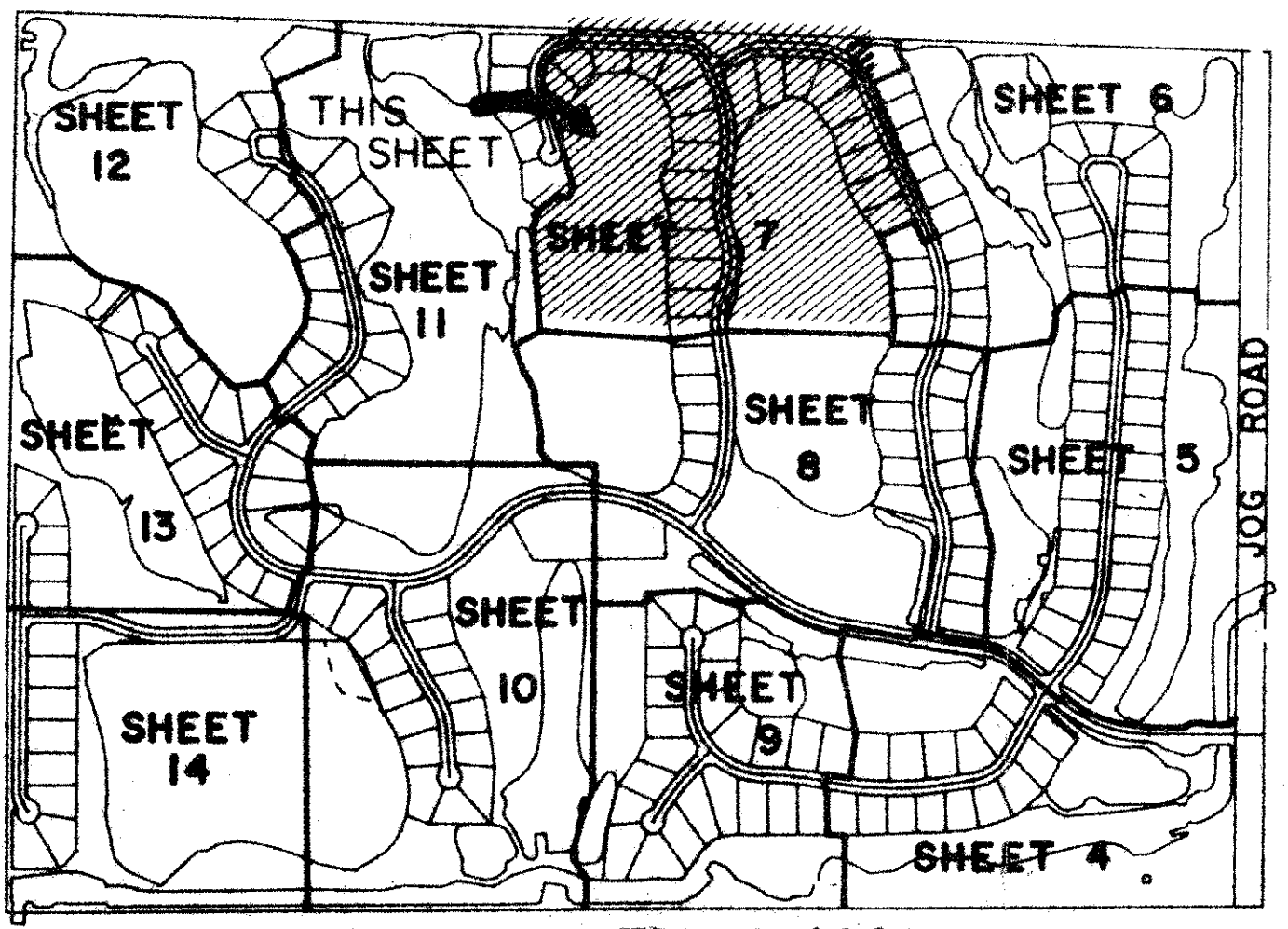
SEE SHT. 6 of 14

Subdivision: Old Marsh G.C. Book 58, Page 68, Quad 42, RE 115B, SE PVD, PUD NAME 33418

TAZ 797

- NOTES: SET PERMANENT REFERENCE MONUMENT (P.R.M.) PERMANENT CONTROL POINT (P.C.P.) BEARING BASE: THE EAST LINE OF SECTION 33 IS TAKEN TO BE S 01°08'15"W AND ALL OTHER BEARINGS ARE RELATIVE THERETO. THE BUILDING SETBACKS SHALL CONFORM TO PALM BEACH COUNTY ZONING CODE. NO BUILDINGS OR ANY KIND OF CONSTRUCTION SHALL BE PLACED ON UTILITY OR DRAINAGE EASEMENTS. NO STRUCTURES, TREES OR SHRUBS SHALL BE PLACED ON DRAINAGE EASEMENTS. APPROVAL OF LANDSCAPING ON UTILITY EASEMENTS OTHER THAN WATER OR SEWER SHALL BE ONLY WITH APPROVAL OF ALL UTILITIES OCCURRING SAME. WHEN DRAINAGE AND UTILITY EASEMENTS CROSS, DRAINAGE EASEMENTS SHALL TAKE PRECEDENCE. THERE SHALL BE NO BUILDINGS, STRUCTURES, ANY KIND OF CONSTRUCTION, TREES OR SHRUBS PLACED ON ANY LANDS OWNED BY THE NORTHERN PALM BEACH COUNTY WATER CONTROL DISTRICT, ON WATER MANAGEMENT EASEMENTS OR ON WATER MANAGEMENT MAINTENANCE EASEMENTS, UNLESS APPROVED, IN PERMIT FORM, BY THE SAID DISTRICT. D.E. DRAINAGE EASEMENT U.E. UTILITY EASEMENT L.A.E. LIMITED ACCESS EASEMENT R. RADIAL LINE G.C. GOLF COURSE W.M.M.E. WATER MANAGEMENT TRACT W.M.E. WATER MANAGEMENT EASEMENT W.M.M.E. WATER MANAGEMENT MAINTENANCE EASEMENT W.P.A. WETLAND PRESERVATION AREA

OLD MARSH GOLF CLUB SHEET 7 OF 14 APRIL, 1987



LANDLAW, BRIDGEMAN, FERRARI & HELLSTROM, INC. CONSULTING ENGINEERS, PLANNERS & SURVEYORS

7 14

APPROVED BY [Signature]

OLD MARSH GOLF CLUB 58/68