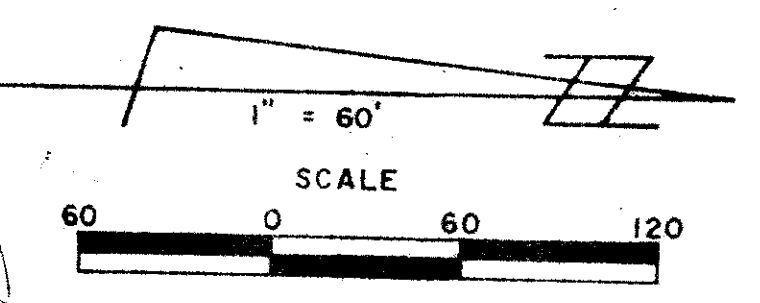


OLD MARSH GOLF CLUB

APRIL, 1987

SHEET 5 OF 14

SEE SHT. 8 OF 14



NOTES:

- ⊕ = SET PERMANENT REFERENCE MONUMENT (P.R.M.)
- ⊙ = PERMANENT CONTROL POINT (P.C.P.)

BEARING BASE:
THE EAST LINE OF SECTION 33 IS TAKEN TO BE S 01°08'15"W, AND ALL OTHER BEARINGS ARE RELATIVE THERE TO.

THE BUILDING SETBACKS SHALL CONFORM TO PAID PLAT COUNTY ZONING CODE.

NO BUILDINGS OR ANY KIND OF CONSTRUCTION SHALL BE PLACED ON UTILITY OR DRAINAGE EASEMENTS.

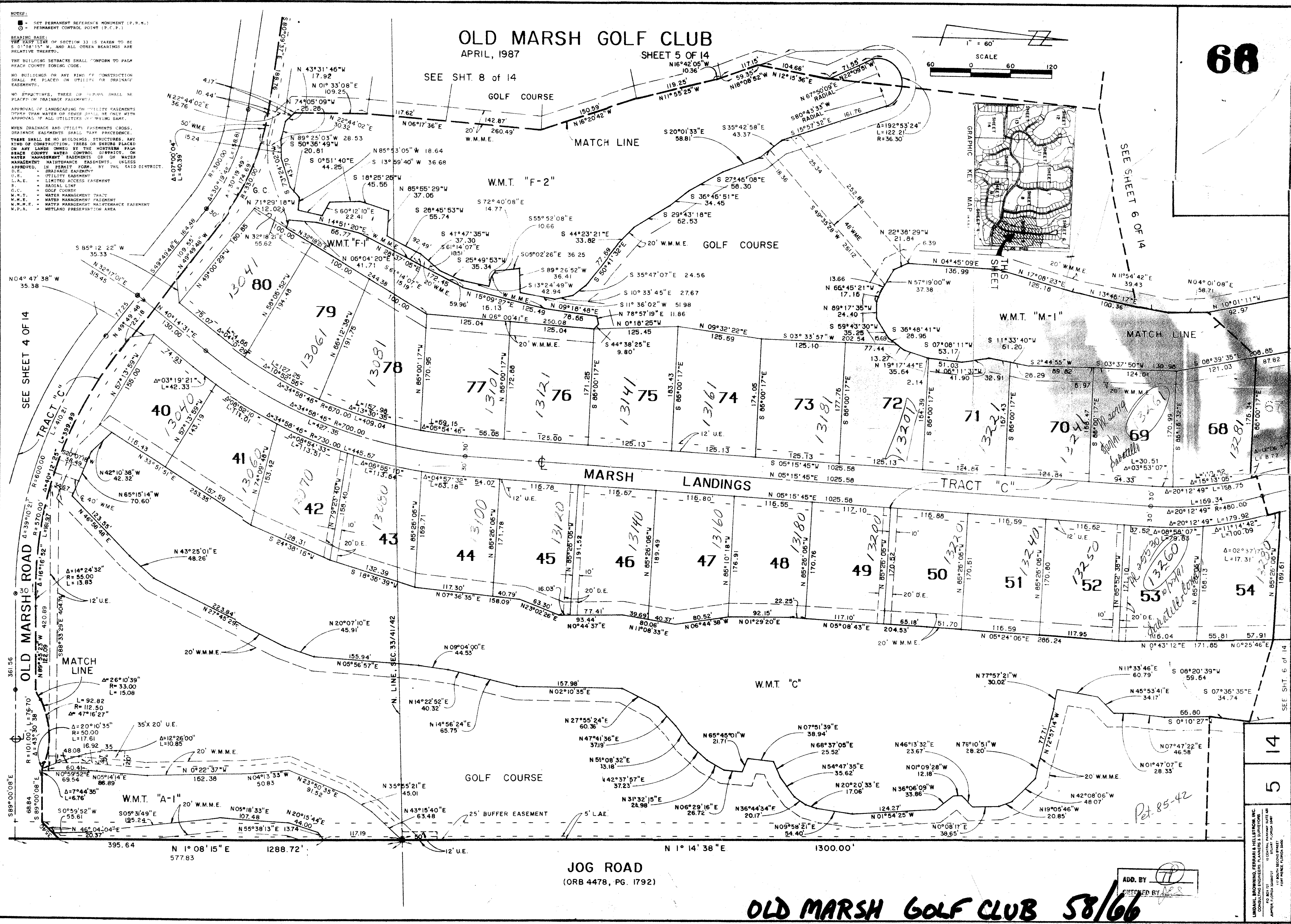
NO STRUCTURES, TREES OR SHRUBS SHALL BE PLACED ON DRAINAGE EASEMENTS.

APPROVAL OF LANDSCAPING OR UTILITY EASEMENTS OTHER THAN WATER OR SEWER SHALL BE ONLY WITH APPROVAL OF ALL UTILITIES INVOLVED.

WHEN DRAINAGE AND UTILITY EASEMENTS CROSS, DRAINAGE EASEMENTS SHALL TAKE PRECEDENCE.

THERE SHALL BE NO BUILDINGS, STRUCTURES, ANY KIND OF CONSTRUCTION, TREES OR SHRUBS PLACED ON ANY LANDS OWNED BY THE NORTHEAST PALM BEACH COUNTY WATER CONTROL DISTRICT OR WATER MANAGEMENT EASEMENTS OR ON WATER MANAGEMENT MAINTENANCE EASEMENTS, UNLESS APPROVED, IN PERMIT FORM, BY THE SAID DISTRICT.

D.E. = DRAINAGE EASEMENT
U.E. = UTILITY EASEMENT
L.A.E. = LIMITED ACCESS EASEMENT
R. = RADIAL LINE
G.C. = GOLF COURSE
W.M.E. = WATER MANAGEMENT TRACT
W.M.P. = WATER MANAGEMENT PERMIT
W.M.A. = WETLAND PRESERVATION AREA



SUBDIVISION Old Marsh G.C.
BOOK 58 PAGE 66
FLOOR PLANS 115B
CADD 42
SE PWD 33418
PLD NAME TAZ 797

14
5

JOG ROAD
(ORB 4478, PG. 1792)

OLD MARSH GOLF CLUB 58/66

ADD. BY [Signature]
CHECKED BY [Signature]

LIONEL BROWNING FERRARI & HELLSTROM INC.
CONSULTING ENGINEERS, PLANNERS & SURVEYORS
11100 BAYVIEW BLVD., SUITE 100
JUPITER, FLORIDA 33417
PHONE: (407) 741-1111
FAX: (407) 741-1112