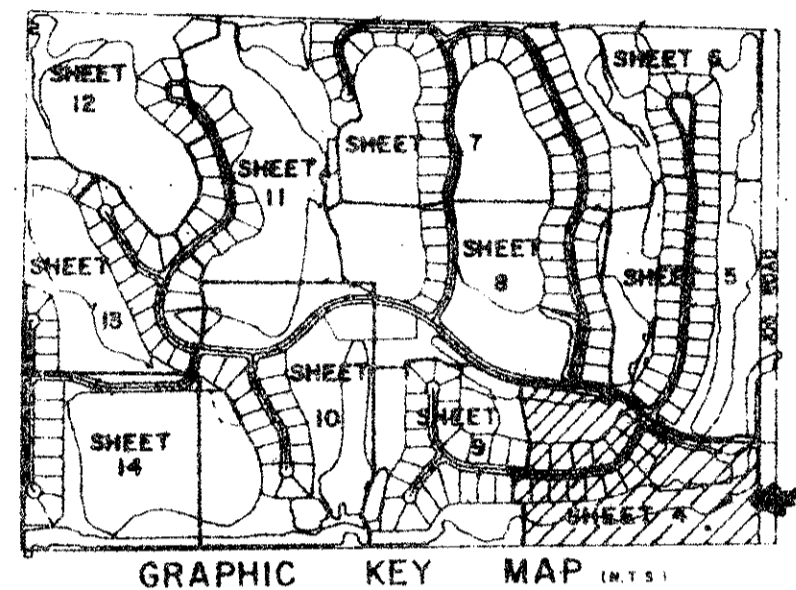
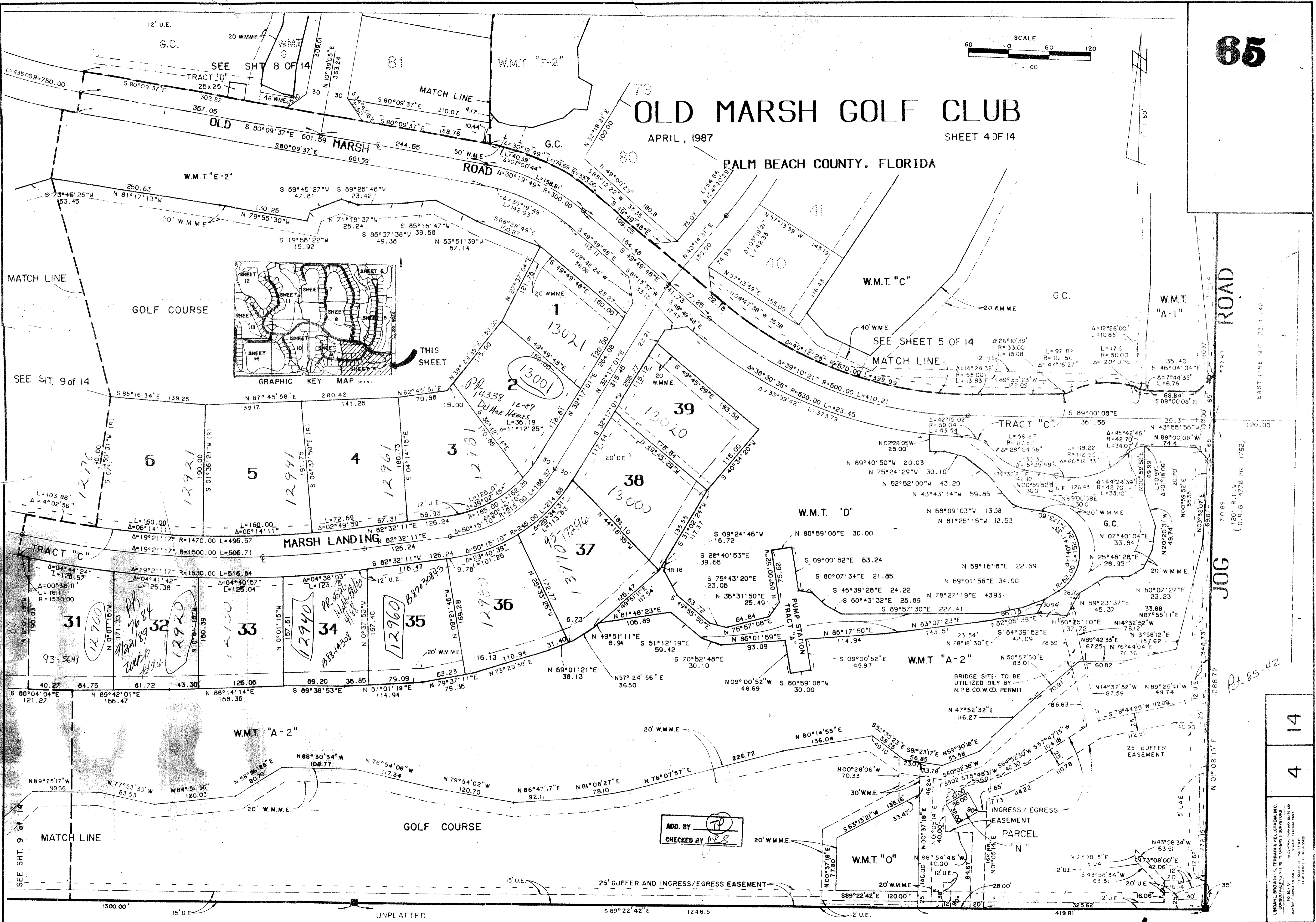
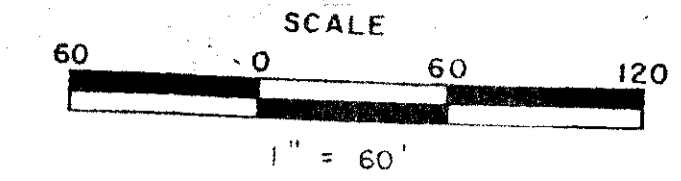


OLD MARSH GOLF CLUB

APRIL, 1987

SHEET 4 OF 14

PALM BEACH COUNTY, FLORIDA



ROAD

JOG

4
14

EAST LINE S.E.C. 33 41-42

70.99
120' R.O.W.
(D.R.B. 4778 PG. 1792)

UNPLATTED

ADD. BY *TP*
CHECKED BY *ALS*

BRIDGE SITE - TO BE UTILIZED ONLY BY N.P.B. CO. W/CD. PERMIT

INGRESS / EGRESS EASEMENT PARCEL

25' BUFFER EASEMENT

5' LAE

SUBDIVISION *38* *W.M.T. E-2*
BOOK *58*
PAGE *115B*
RE *33418*
DATE *7-2-79*
BY *PVD*

OLD MARSH GOLF CLUB 58/65