

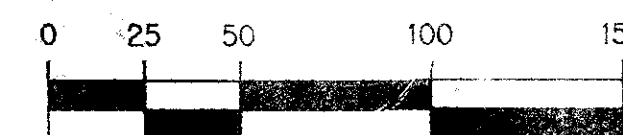
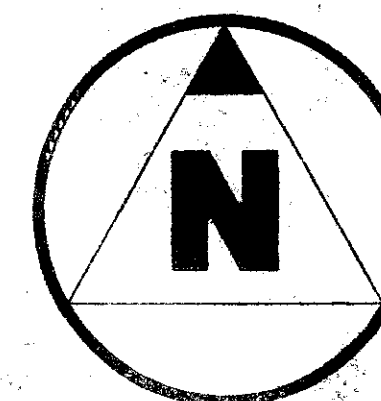
# MISSION BAY, TRACT H - PHASE I

(A PART OF A P.U.D.)

A REPLAT OF A PORTION OF TRACT H OF THE PLAT OF MISSION BAY, A P.U.D., AS RECORDED IN PLAT BOOK 53, PAGES 112-120 OF THE PUBLIC RECORDS OF PALM BEACH COUNTY, FLORIDA, SECTION 13, TOWNSHIP 47 SOUTH, RANGE 41 EAST

SHEET 2 OF 2

APRIL, 1987



SCALE: 1" = 50'

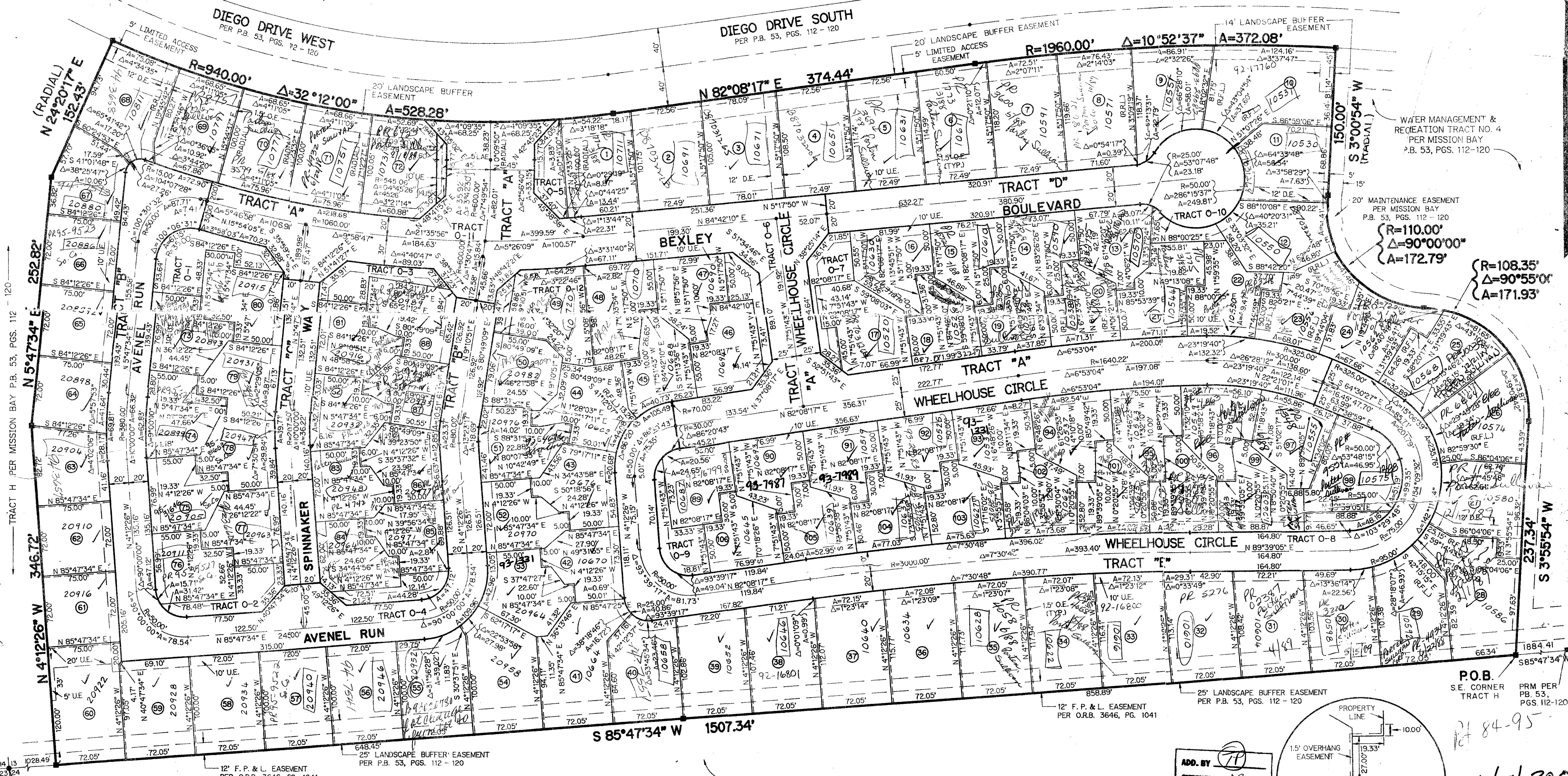
TRACT G  
MISSION BAY  
P.B. 53, PGS. 112-120

WATER MANAGEMENT &  
RECREATION TRACT NO. 4  
PER MISSION BAY  
P.B. 53, PGS. 112-120

20' MAINTENANCE EASEMENT  
PER MISSION BAY  
P.B. 53, PGS. 112-120

$R=110.00'$   
 $\Delta=90^{\circ}00'00''$   
 $A=172.79'$

$R=108.35'$   
 $\Delta=90^{\circ}55'00''$   
 $A=171.93'$



TRACT H PER MISSION BAY P.B. 53, PGS. 112-120

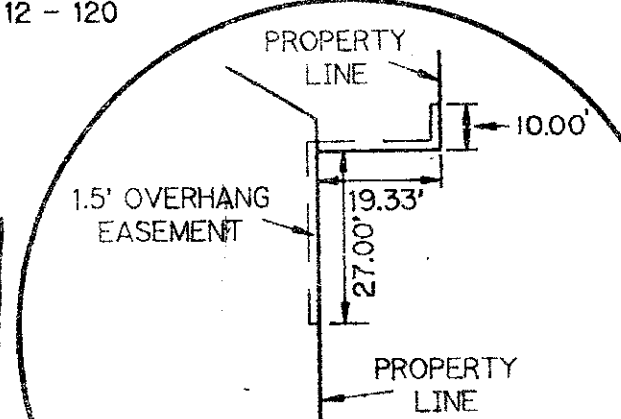
FOUND 2" IRON PIPE  
W/CAP - STATE SECTION CORNER  
PER P.B. 53, PGS. 112-120

12' F.P. & L. EASEMENT  
PER O.R.B. 3646, PG. 1041

25' LANDSCAPE BUFFER EASEMENT  
PER P.B. 53, PGS. 112-120

FLORIDA FRUIT LANDS COMPANYS  
SUBDIVISION NO. 2  
P.B. 1, PG. 102

ADD. BY [Signature]  
CHECKED BY [Signature]



TYPICAL OVERHANG  
EASEMENT  
SCALE: 1" = 30'

131474  
SUBDIVISION - Mission Bay  
BOOK 58 PAGE 52  
FLOOD ZONE B  
QUAD - 48  
SE PUD  
PUD NAME - Tract H Phase I  
TAZ 782

P.O.B.  
S.E. CORNER  
TRACT H  
PRM PER  
PB. 53,  
PGS. 112-120  
84-95  
0454-300