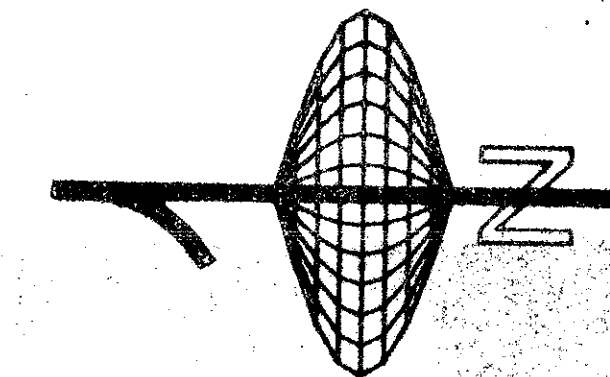


MONTEGO BAY PLAT 3

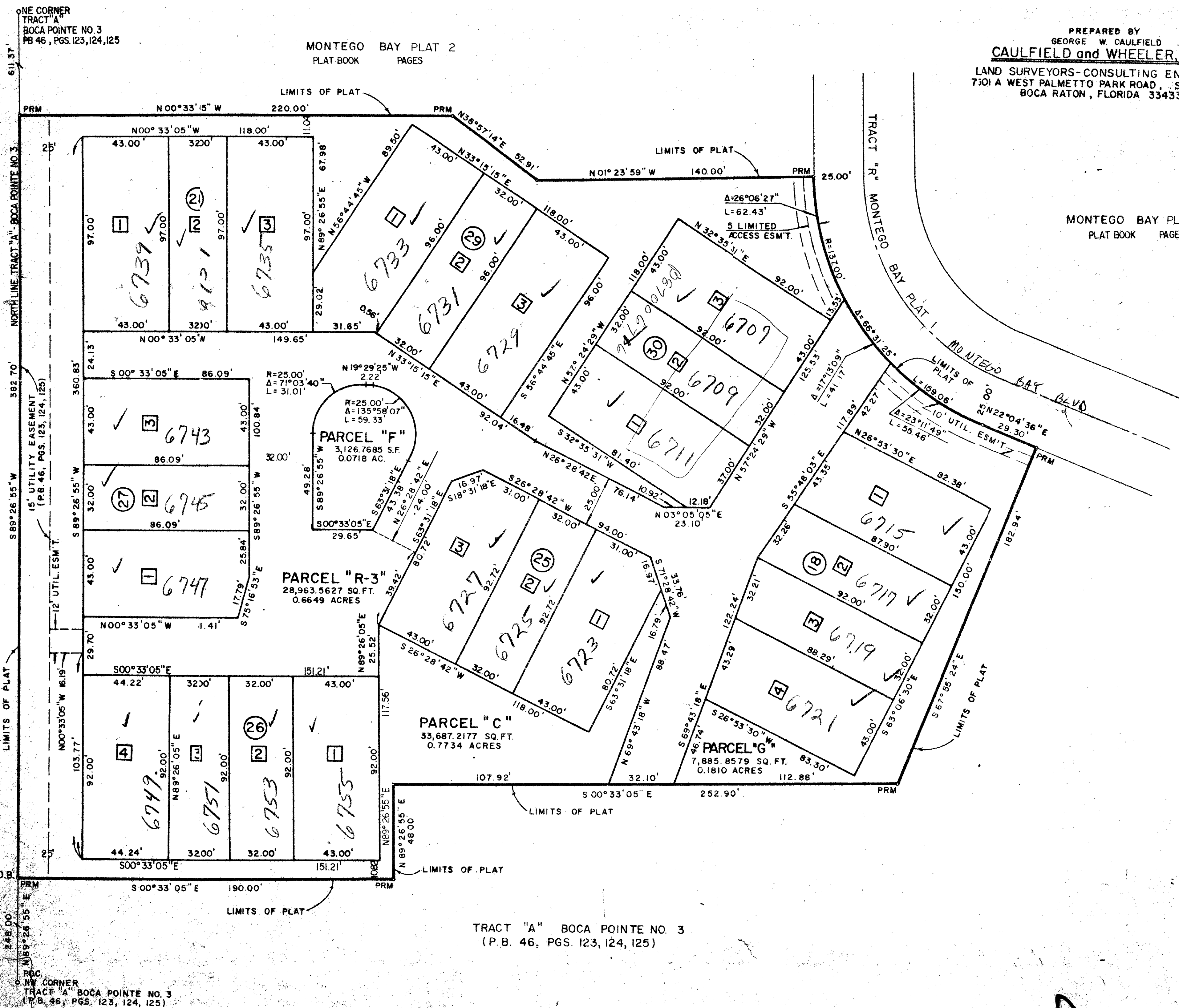
SEC. 27, TWP 47 S, RGE. 42 E.
 A PORTION OF BOCA POINTE P.U.D., BEING A REPLAT OF A PORTION OF TRACT "A",
 BOCA POINTE PLAT NO.3 AS RECORDED IN PLAT BOOK 46, PAGES 123, 124, 125 OF THE
 PUBLIC RECORDS OF PALM BEACH COUNTY, FLORIDA
 SHEET 2 OF 2

STATE OF FLORIDA
 COUNTY OF PALM BEACH
 THIS PLAT WAS FILED FOR
 RECORD AT _____
 THIS _____ DAY OF _____
 A.D. 1987 AND DULY RECORDED
 IN PLAT BOOK _____ ON _____
 PAGES 740
 JOHN B. DUNKLE,
 CLERK CIRCUIT COURT
 BY _____
 DEPUTY CLERK



0 15 30 60 120
 SCALE 1" = 30'

PREPARED BY
 GEORGE W. CAULFIELD
CAULFIELD and WHEELER, INC.
 LAND SURVEYORS-CONSULTING ENGINEERS
 7301 A WEST PALMETTO PARK ROAD, SUITE 100A
 BOCA RATON, FLORIDA 33433



SURVEYOR'S NOTES

NO BUILDINGS OR ANY KIND OF CONSTRUCTION SHALL BE PLACED ON UTILITY OR DRAINAGE EASEMENTS.
 NO STRUCTURES, TREES, OR SHRUBS SHALL BE PLACED ON DRAINAGE EASEMENTS.
 APPROVAL OF LANDSCAPING ON UTILITY EASEMENTS, OTHER THAN WATER AND SEMER SHALL BE ONLY WITH THE APPROVAL OF ALL UTILITIES OCCUPYING SAME.
 BEARINGS SHOWN HEREON ARE BASED ON THE PLAT OF "BOCA POINTE NO. 3" AS RECORDED IN PLAT BOOK 46 AT PAGES 123, 124 AND 125 OF THE PUBLIC RECORDS OF PALM BEACH COUNTY FLORIDA, NORTH LINE TRACT "A", S89°26'55"W
 P.R.M. - INDICATES A 4" x 4" x 36" CONCRETE PERMANENT REFERENCE MONUMENT WITH A BRASS DISK STAMPED NO. 1930.
 P.C.P. - INDICATES PERMANENT CONTROL POINT AND IS A NAIL IN BRASS SURVEY CAP STAMPED NO. 1930.
 SURVEY DATA IN FIELD BOOK 63

APP. BY _____
 CHECKED BY _____

0211-307

Montego Bay #3 58/20

SUBDIVISION - Montego Bay #3
 BOOK 58 PAGE 20
 FLOOD ZONE 242B
 QUAD # 39 401 FLOOD W. ZONING RS
 SE PUD ZIP CODE 33433
 PUD NAME Boca Pointe
 172 686
 Janice 1/29/87

BOCA LANE
 PB. 33 Pages 64,65,66

TRACT "A" BOCA POINTE NO. 3
 (P.B. 46, PGS. 123, 124, 125)