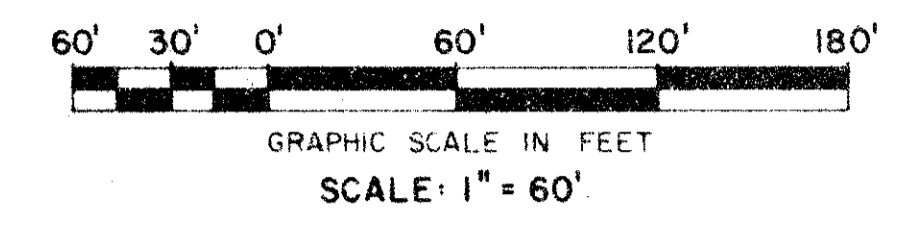


North

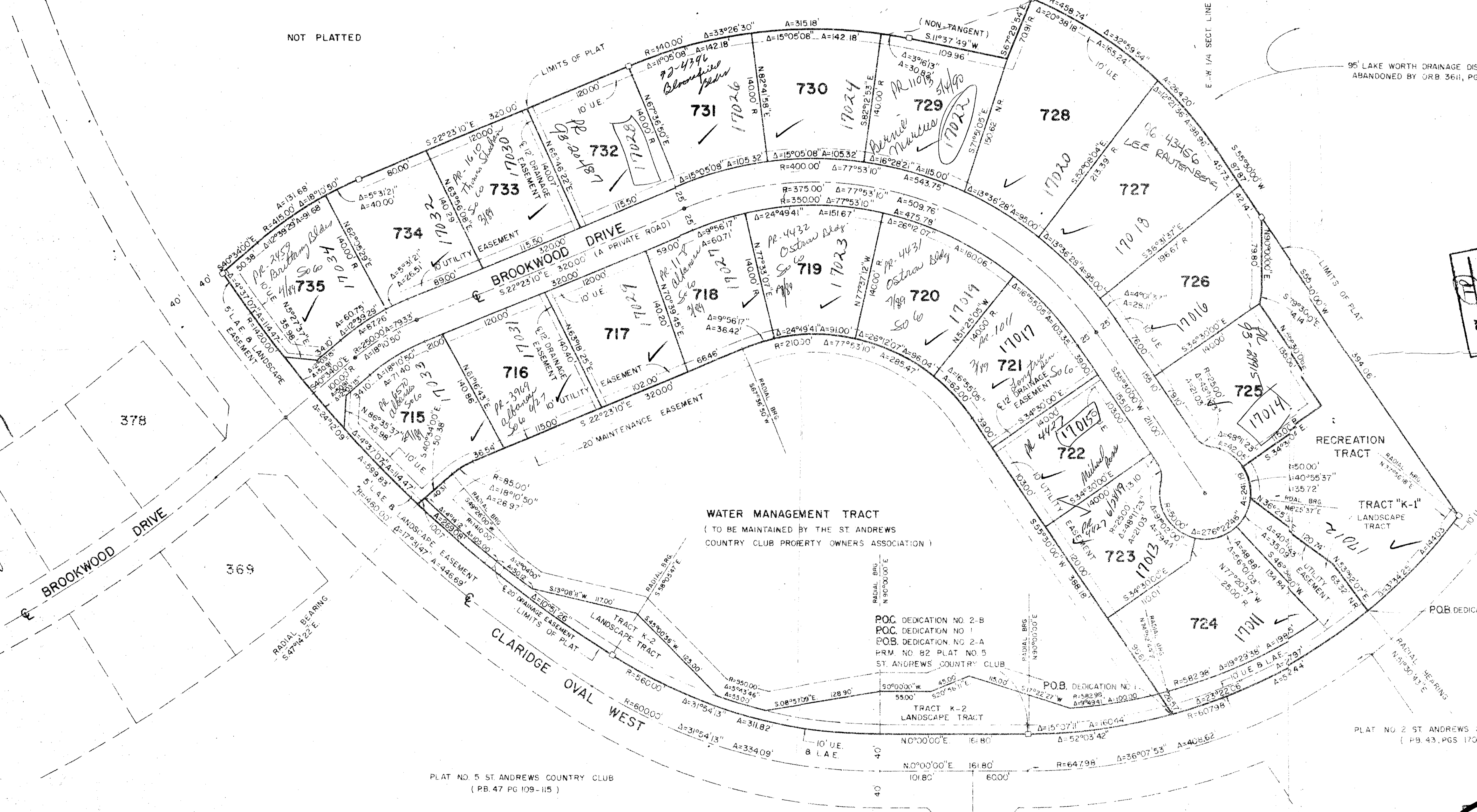


NOT PLATTED

TRACT B, PLAT NO 2 ST ANDREWS COUNTRY CLUB
(PB. 43, PGS 170-78)

95' LAKE WORTH DRAINAGE DISTRICT EASEMENT
ABANDONED BY ORB 3611, PG 1516

SUBDIVISION * St. Andrews
BOOK 57 PAGE 155
PLOT NO 13 AS TOG MAP 2.15A
QUAD 52 AS TOG RE
SR PID 33438
PUR NAME Plat 8
TAZ 603 33447/2



WATER MANAGEMENT TRACT
(TO BE MAINTAINED BY THE ST ANDREWS
COUNTRY CLUB PROPERTY OWNERS ASSOCIATION)

POC DEDICATION NO 2-B
POC DEDICATION NO 1
POB DEDICATION NO 2-A
PRM NO 82 PLAT NO 5
ST. ANDREWS COUNTRY CLUB

POB DEDICATION NO 1
POB DEDICATION NO 2
POB DEDICATION NO 3

PLAT NO 5 ST ANDREWS COUNTRY CLUB
(PB. 47 PG 109-115)

PLAT NO 2 ST ANDREWS COUNTRY CLUB
(PB. 43, PGS 170-178)

APP. BY
CHECKED BY

80-73

80-73
AREA J
EX #85 - 4/29/87

0305-001

ST. ANDREWS COUNTRY CLUB
(A P.U.D.)

PLAT No. 8

WILLIAM G. WALLACE, INC.
CONSULTING ENGINEERS, LAND PLANNERS & SURVEYORS
1775 ALTERNATE A1A LAKE PARK PL. 33410 • 305-842-4231

FIELD	M. BROWN	JOB NO.	85-729 E	FB	PG
OFFICE	R.M. ROOANO	DATE	NOV. 1986	DWG NO.	85-729
CHK'D	DJM	REF		SHEET	3

57/155

BRUNING 44-132 603342