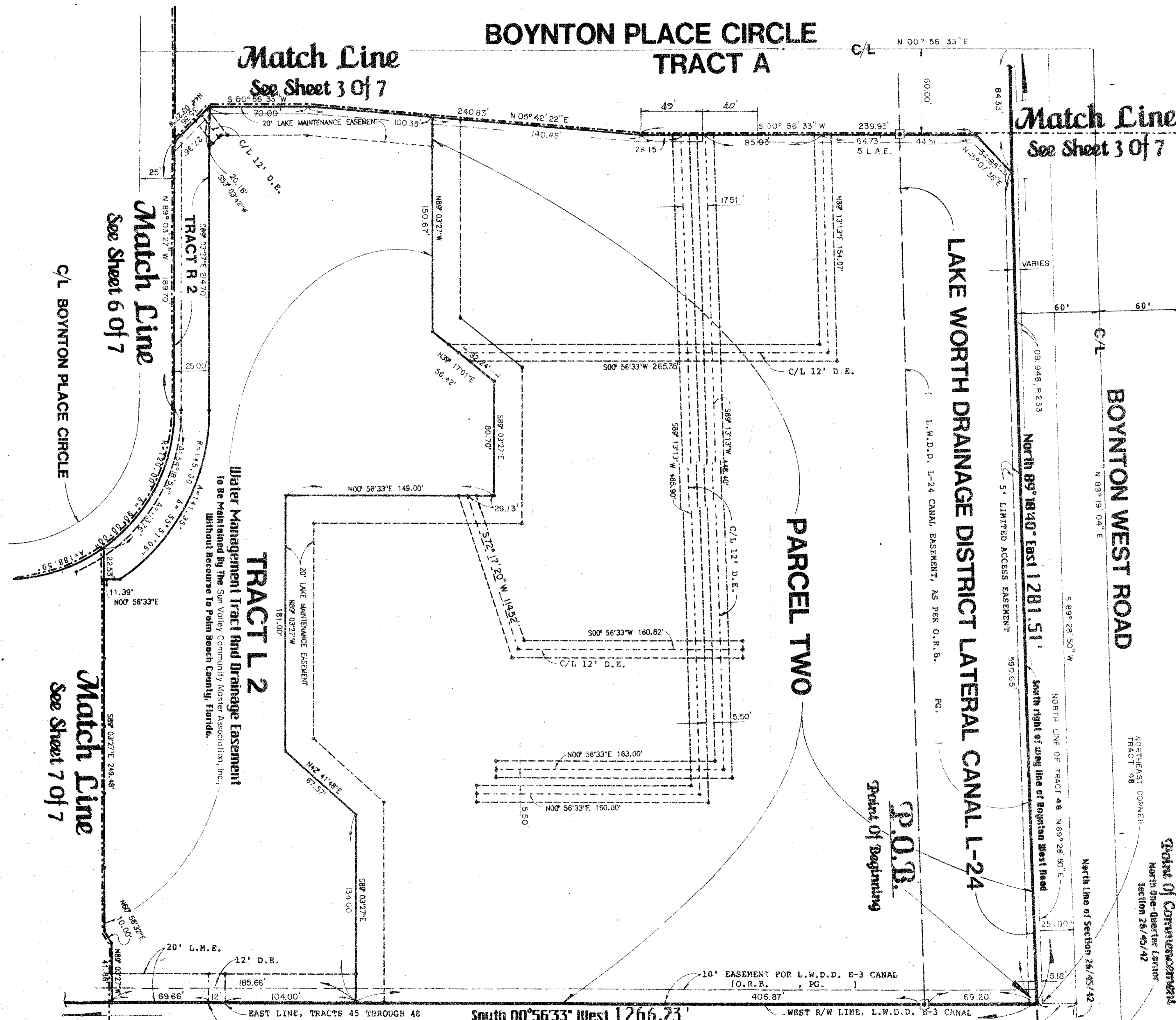
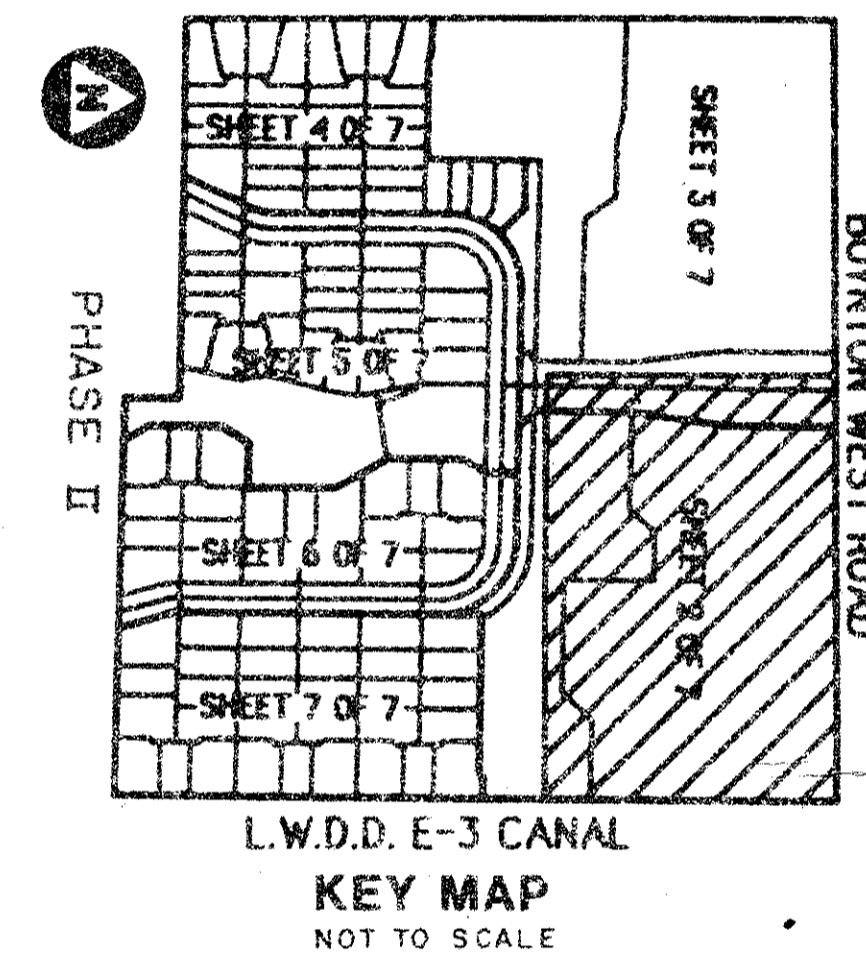
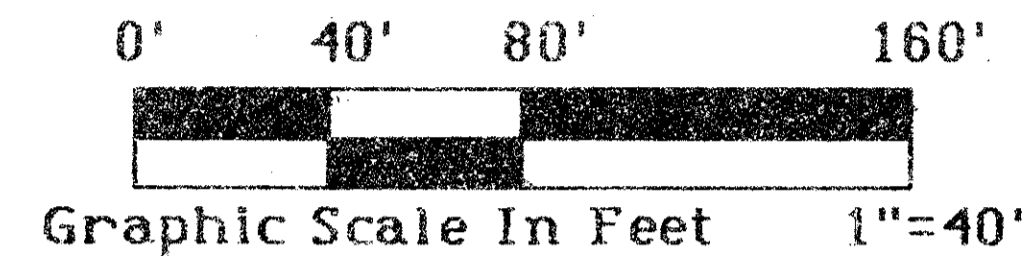
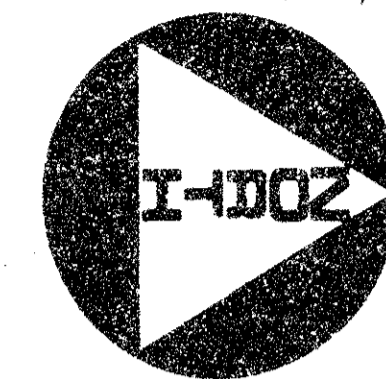


# GREATER BOYNTON PLACE

-A Part Of Sun Valley, A Planned Unit Development, Lying In Section 26, Township 45 South, Range 42 East-  
Being A Replat Of Portions Of Tracts 45 Through 48, Inclusive, Subdivision Of Section 26, Plat Book 6, Page 26, Public Records Of Palm Beach County, Florida  
March, A. D., Nineteen Hundred Eighty Seven

Sheet Two Of Seven

State of Florida )  
County of Palm Beach )  
This Plat was filed for record  
at \_\_\_\_\_ this \_\_\_\_\_ day of  
\_\_\_\_\_, A. D., 1987, and  
duly recorded in Plat Book  
\_\_\_\_\_ on Pages \_\_\_\_\_ thru \_\_\_\_\_  
John B. Dunkle,  
Clark of the Circuit Court.  
By \_\_\_\_\_  
Deputy Clerk.



Subdivision \* Greater Boynton Place  
BOOK 57  
PAGE 137  
FLOOD MAP \* 1900  
ZONING RS  
QUAD \* 35  
PUD  
ZIP CODE 33469  
TAZ 448

LAKE WORTH DRAINAGE DISTRICT EQUALIZING CANAL E-3  
DB. 118, P. 518

Plat No. 5, Cedar Point  
(P.D. 41, Pg 73 through 78)

Plat No. 7, Cedar Point  
(P.D. 43, Pg 168 and 169)

GREATER BOYNTON PLACE

This instrument was prepared by Wm. S. Van Campen, R.L.S.,  
a member of the Florida Board of Surveying & Mapping,  
915 West Blue Heron Boulevard, Suite 121, Riviera  
Beach, Florida 33404. Phone: (305) 848-2102.

0498.004