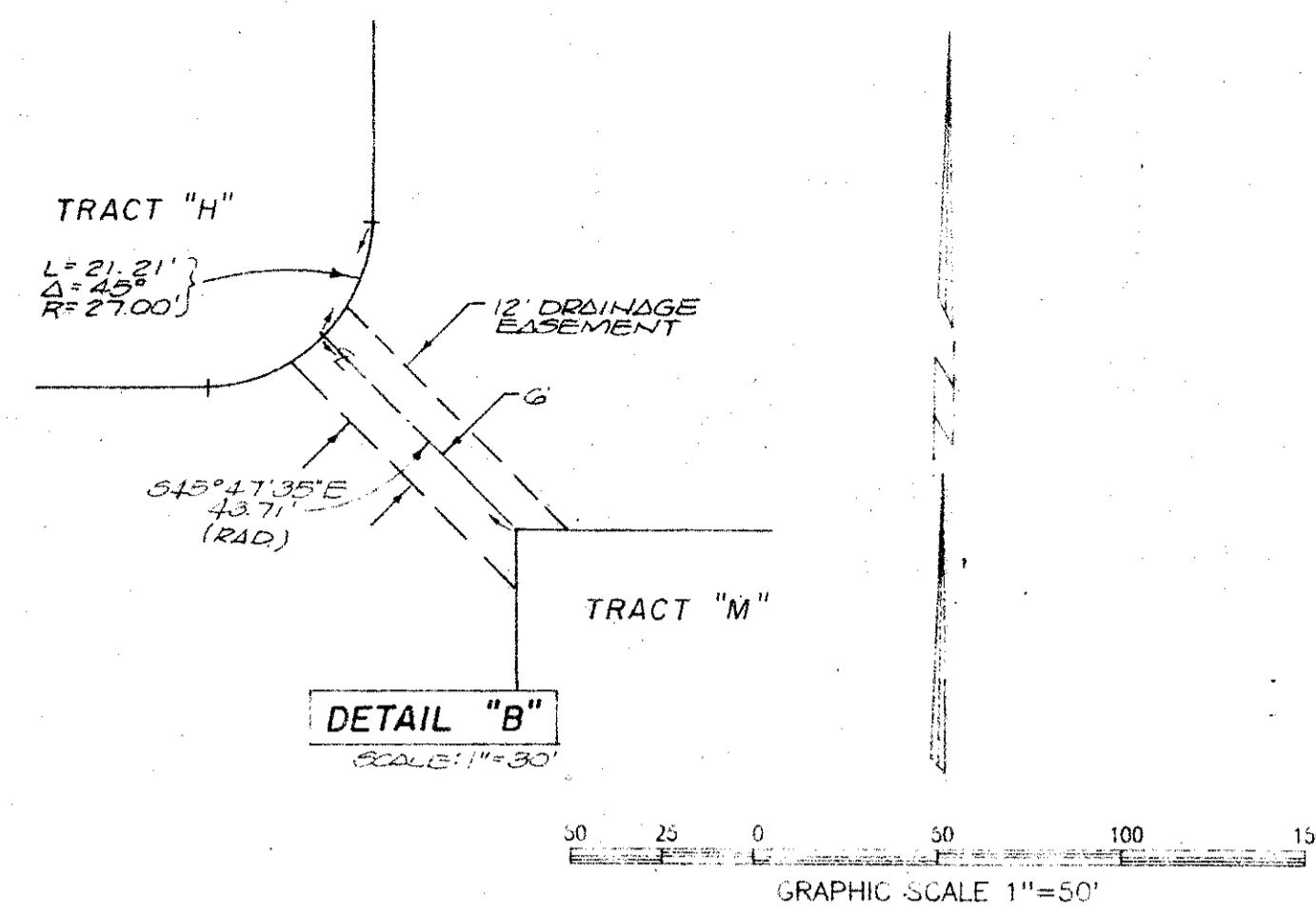
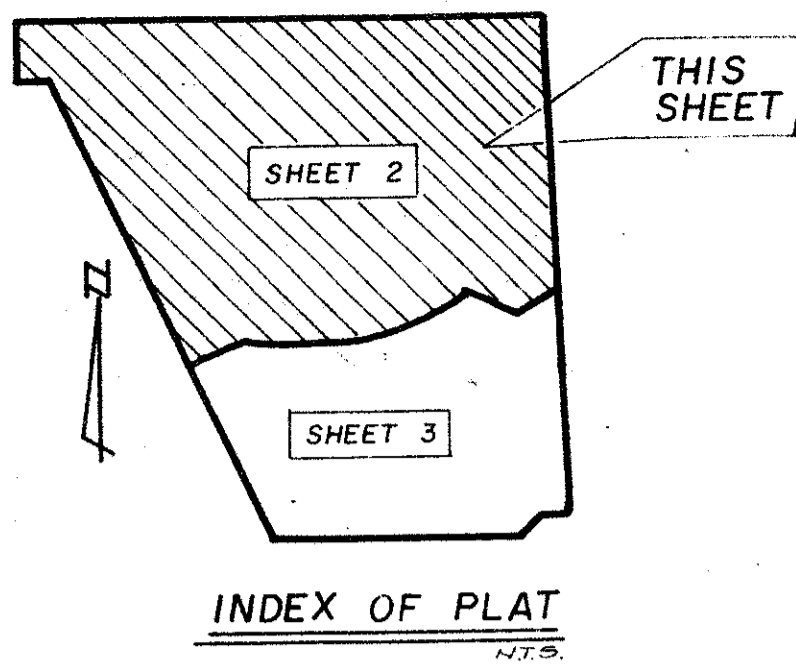


SWEETWATER SECTION FOUR

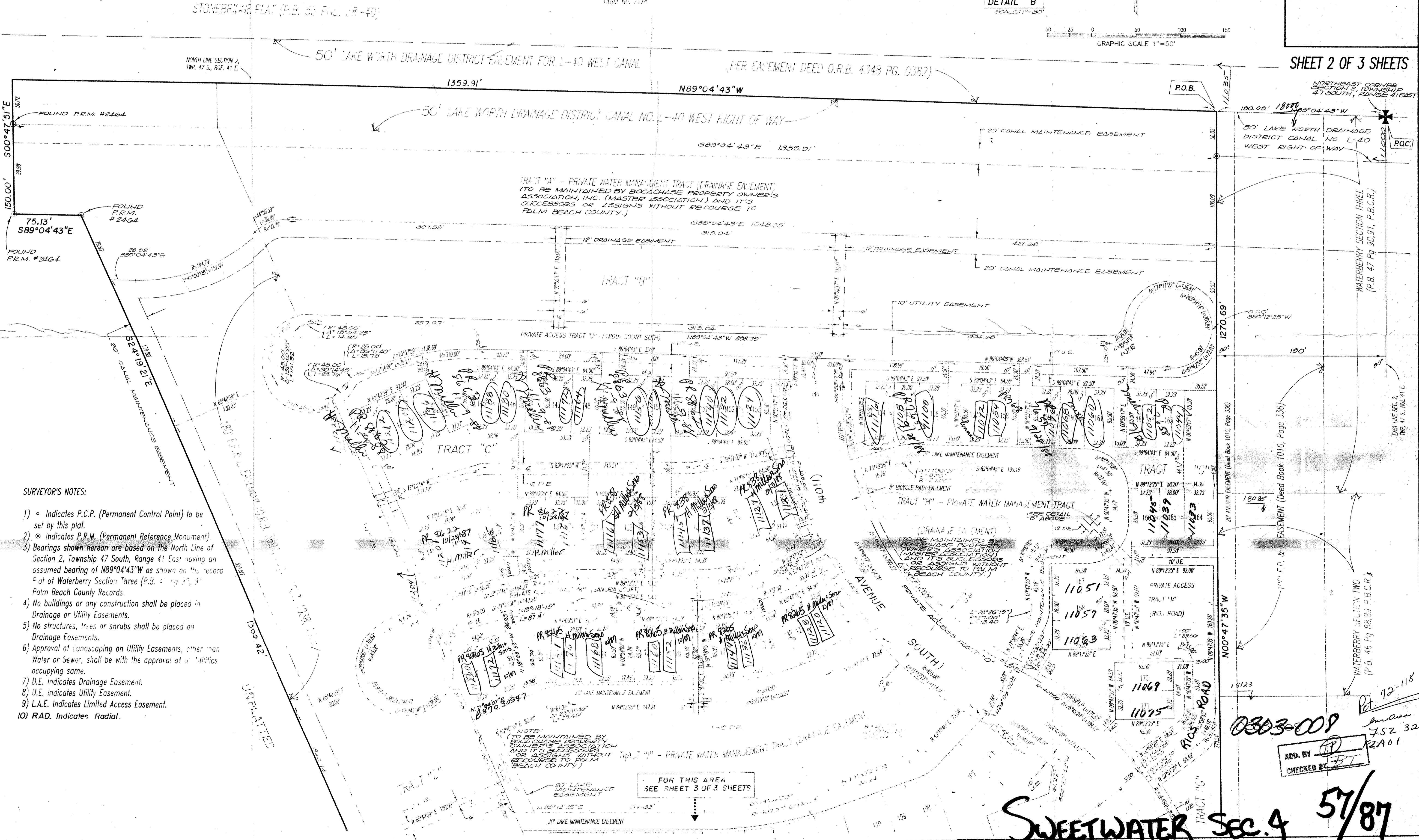
(A PORTION OF BOCA CHASE - RIVIERA P.U.D.)
A PORTION OF THE N.E. 1/4 OF SECTION 2, TOWNSHIP 47 SOUTH, RANGE 41 EAST
PALM BEACH COUNTY, FLORIDA

Prepared By:
HELLER - WEAVER and CATO, Inc.

5667 Coral Gate Boulevard
Margate, Florida 33163
Contract No. 7179



SHEET 2 OF 3 SHEETS



- SURVEYOR'S NOTES:**
- 1) ○ Indicates P.C.P. (Permanent Control Point) to be set by this plat.
 - 2) ⊙ Indicates P.R.M. (Permanent Reference Monument).
 - 3) Bearings shown hereon are based on the North Line of Section 2, Township 47 South, Range 41 East having an assumed bearing of N89°04'43"W as shown on the record Plat of Waterberry Section Three (P.B. 47 Pg. 30, 31, 32) Palm Beach County Records.
 - 4) No buildings or any construction shall be placed in Drainage or Utility Easements.
 - 5) No structures, trees or shrubs shall be placed on Drainage Easements.
 - 6) Approval of Landscaping on Utility Easements, other than Water or Sewer, shall be with the approval of utilities occupying same.
 - 7) D.E. Indicates Drainage Easement.
 - 8) U.E. Indicates Utility Easement.
 - 9) L.A.E. Indicates Limited Access Easement.
 - 10) RAD. Indicates Radial.

Subdivision Sweetwater
 BOOK 89 PAGE 8
 FLOOD ZONE 100
 ZONING AF
 BE PUD BOCA CHASE
 ZIP CODE 33434
 PUD NAME BOCA CHASE
 T 47 S R 41 E

0303-009
 ADD. BY [Signature]
 CHECKED BY [Signature]
 Pet 72-118
 752 32
 2A01

SWEETWATER SEC. 4 57/87

FOR THIS AREA
 SEE SHEET 3 OF 3 SHEETS