

PALM CHASE LAKES

(A P.U.D.)

A REPLAT OF MILITARY CITY, PLAT BOOK 13, PAGE 44 AND A REPLAT OF TRACTS 49, 50, 59, AND 60 OF THE SUBDIVISION OF SECTION 26, TOWNSHIP 45 SOUTH, RANGE 42 EAST, PLAT BOOK 6, PAGE 26

PALM BEACH COUNTY, FLORIDA

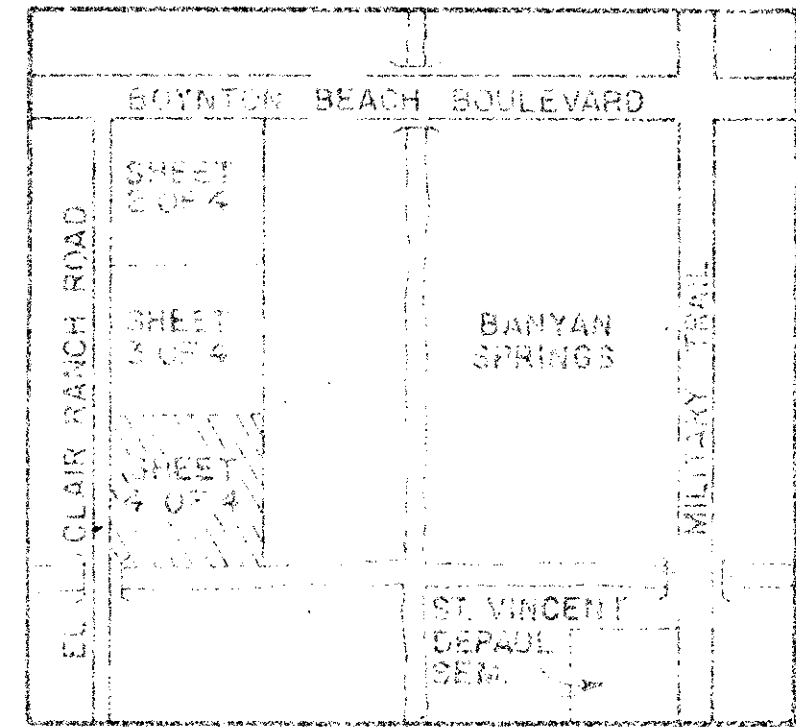
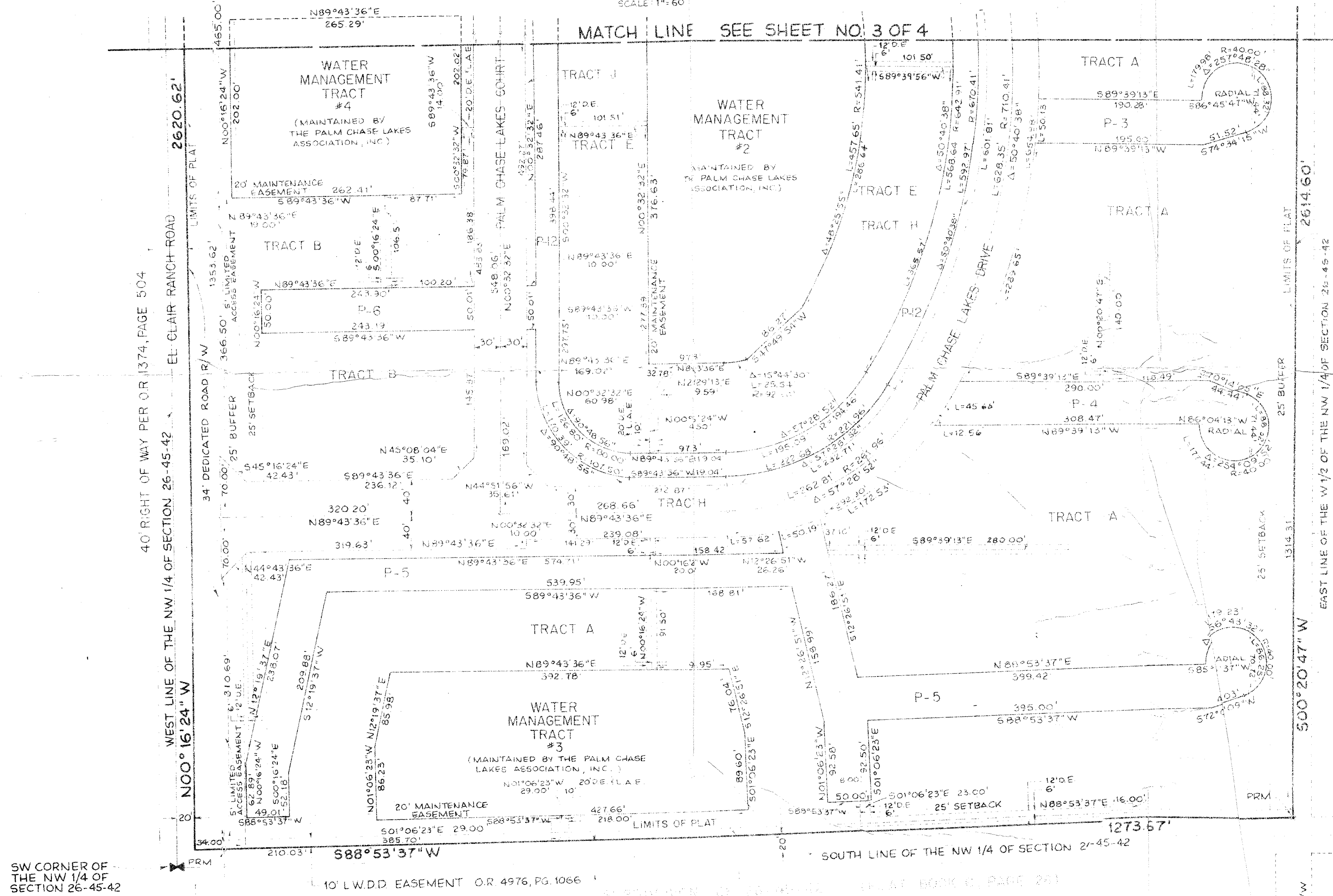
THIS INSTRUMENT PREPARED BY JAMES E. PARK, P.L.S.

WILLIAMS, HATFIELD & STOWER, INC. - ENGINEERS - PLANNERS - SURVEYORS

1325 SOUTH CONGRESS AVENUE, SUITE 118, BOYNTON BEACH, FLORIDA 33435

SHEET 4 OF 4

21



SW CORNER OF THE NW 1/4 OF SECTION 26-45-42

Pet. 86-15

0499-001

PALM CHASE LAKES 57/21