

# -Northtree-

-Lying In Sections Nine, Ten And Sixteen, Township Forty Five South, Range Forty Two East-  
 Being A Replat Of Portions Of Blocks Forty And Forty One, Palm Beach Farms Company's Plat Number Three, Recorded In Plat Book Two,  
 Pages Forty Five Through Fifty Four, Inclusive, Public Records, Palm Beach County, Florida  
 -A Part Of Boynton West, A Planned Unit Development-

July, A.D., Nineteen Hundred Eighty Six

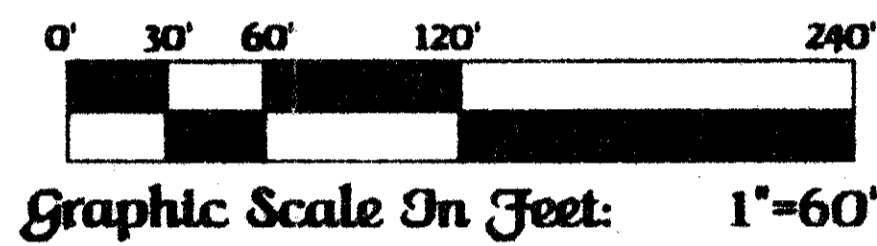
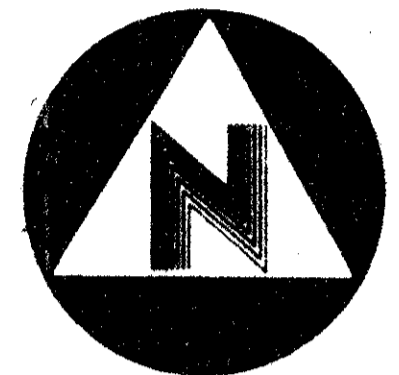
# 190

State of Florida )  
 County of Palm Beach )  
 This Plat was filed for record  
 at \_\_\_\_\_ this \_\_\_\_\_ day of  
 \_\_\_\_\_, A.D., 1986, and  
 duly recorded in Plat Book  
 on Pages thru \_\_\_\_\_  
 John T. Dunkle,  
 Clerk of the Circuit Court.  
 By \_\_\_\_\_  
 Deputy Clerk

Sheet 05 of 07

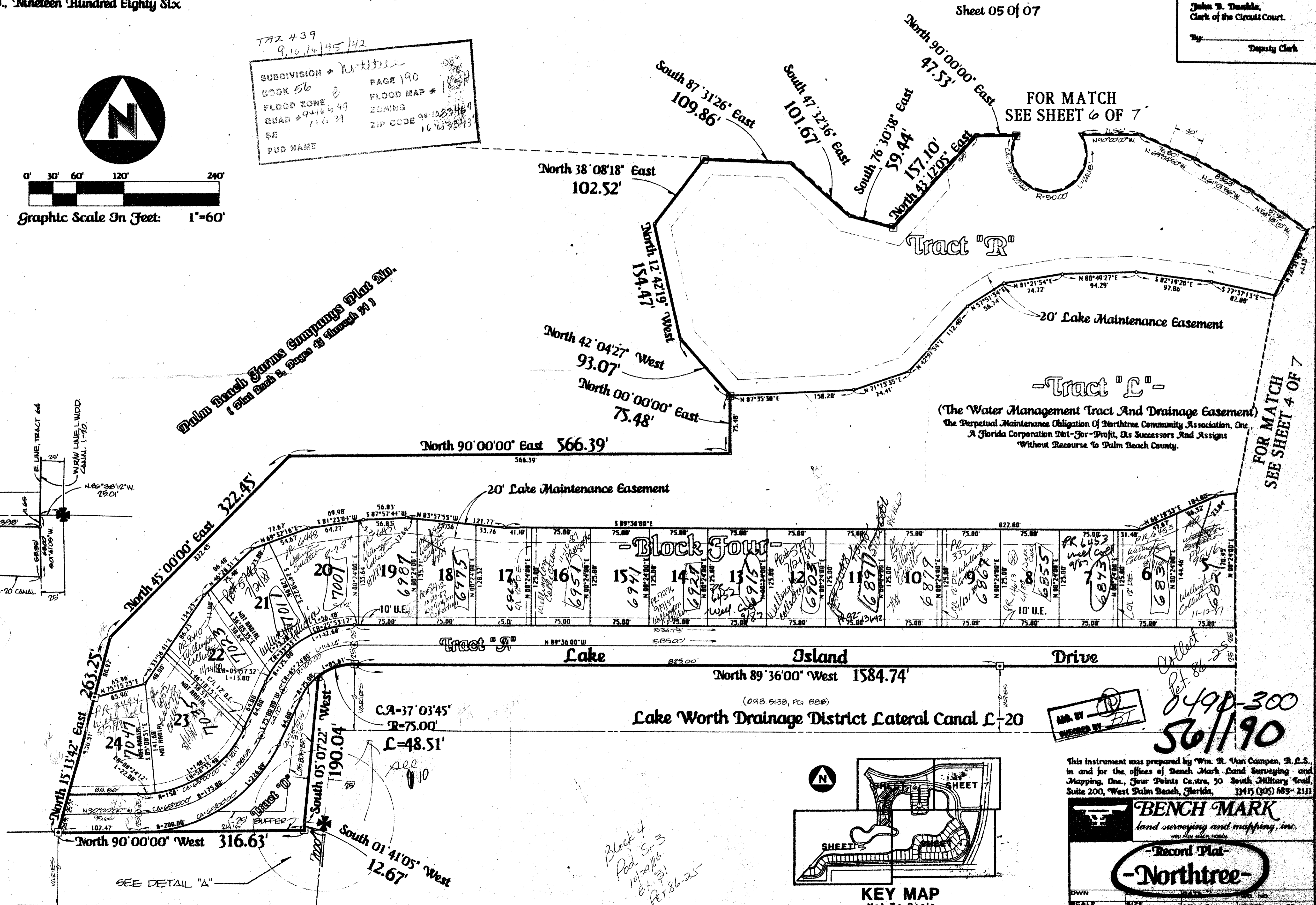
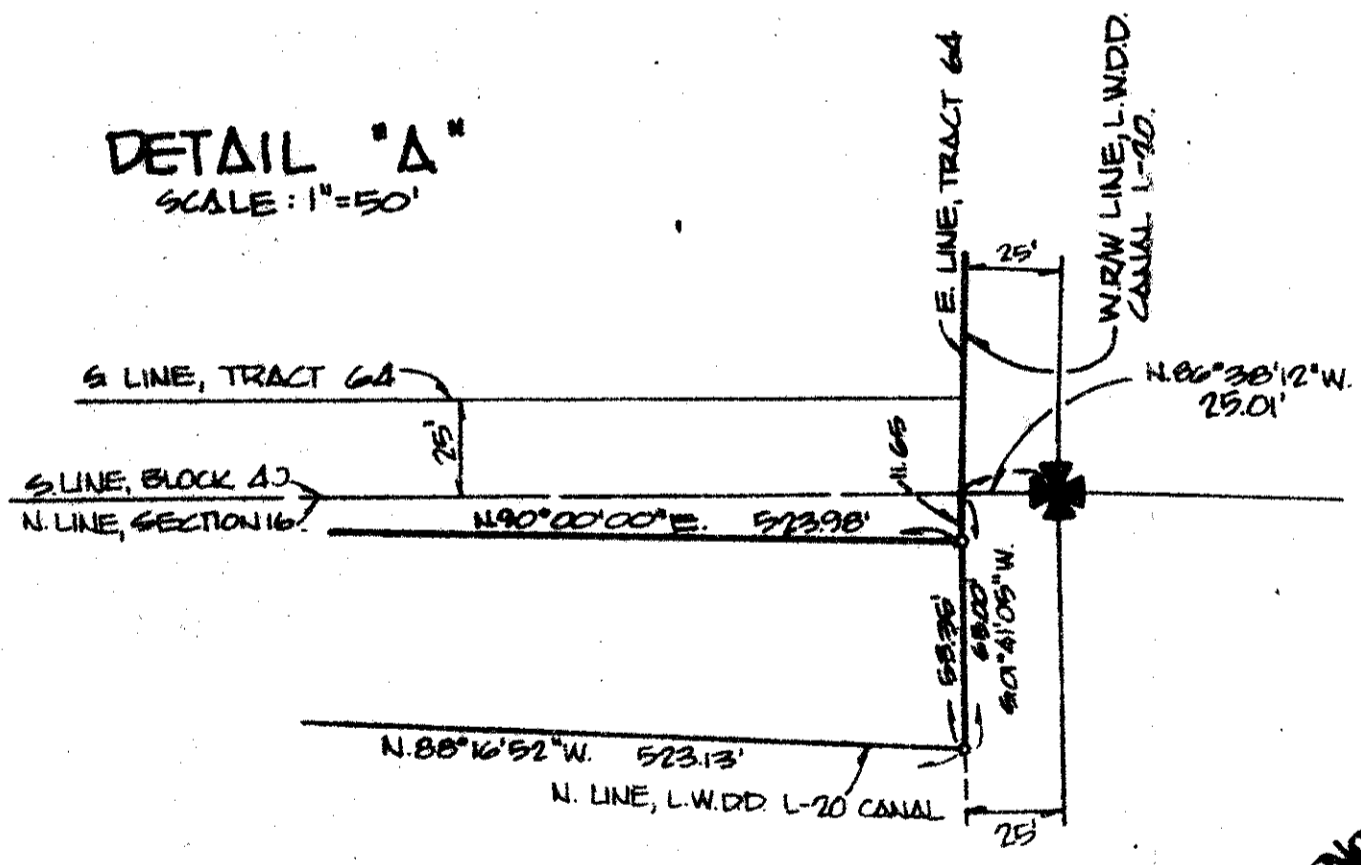
TAZ 439  
 9, 10, 16, 45, 142

SUBDIVISION * Northtree	PAGE 190
BOOK 56	FLOOD MAP *
FLOOD ZONE 0	ZONING
QUAD # 9416 49	ZIP CODE 941033469
SE 116 39	16 03 2543
PUD NAME	



Palm Beach Farms Company's Plat No. 3  
 (See Book 2, Pages 43 through 54)

DETAIL "A"  
 SCALE: 1"=50'



FOR MATCH  
 SEE SHEET 6 OF 7

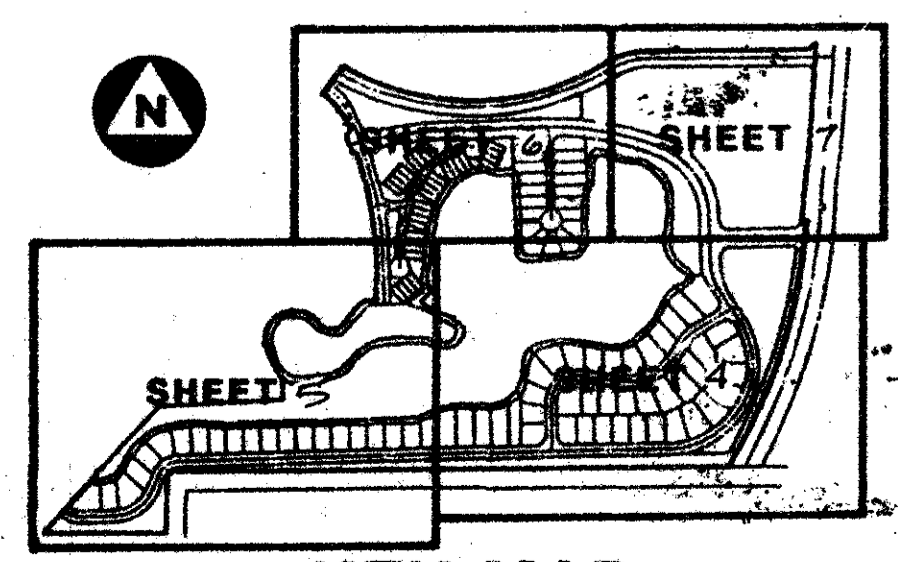
FOR MATCH  
 SEE SHEET 4 OF 7

-Tract "L"-  
 (The Water Management Tract And Drainage Easement)  
 The Perpetual Maintenance Obligation Of Northtree Community Association, Inc.,  
 A Florida Corporation Not-For-Profit, Its Successors And Assigns  
 Without Recourse To Palm Beach County.

Lake Worth Drainage District Lateral Canal L-20  
 (DAB 5130, PC 800)

NO. BY \_\_\_\_\_  
 DRAWN BY \_\_\_\_\_

8490-300  
 56/190



KEY MAP  
 Not To Scale

This instrument was prepared by Wm. R. Van Campen, R.L.S.,  
 in and for the offices of Bench Mark Land Surveying and  
 Mapping, Inc., Four Points Centre, 50 South Military Trail,  
 Suite 200, West Palm Beach, Florida, 33415 (305) 689-2111

**BENCH MARK**  
 land surveying and mapping, inc.  
 WEST PALM BEACH, FLORIDA

-Record Plat-  
**-Northtree-**

OWN	DATE	PLAT NO.	SHEET	OF

Block 4  
 Pod S-3  
 10/20/86  
 81-31  
 Pct 86-25