

PLAN HOLD CORPORATION • IRVINE, CALIFORNIA  
REORDER BY NUMBER 0734R

# SUN VALLEY II

P.U.D.

IN SECTIONS 22 & 23 TWP 45S, RGE. 42E. INCLUDING A REPLAT OF  
A PORTION OF BOYNTON GARDENS (6-32 PALM BEACH CO.)

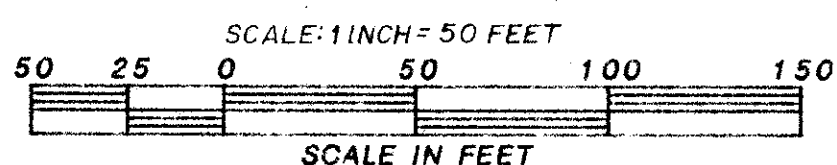
PALM BEACH COUNTY FLORIDA  
SURVEYORS - ENGINEERS

WINNINGHAM & LIVELY, INC.

FORT LAUDERDALE, FLORIDA

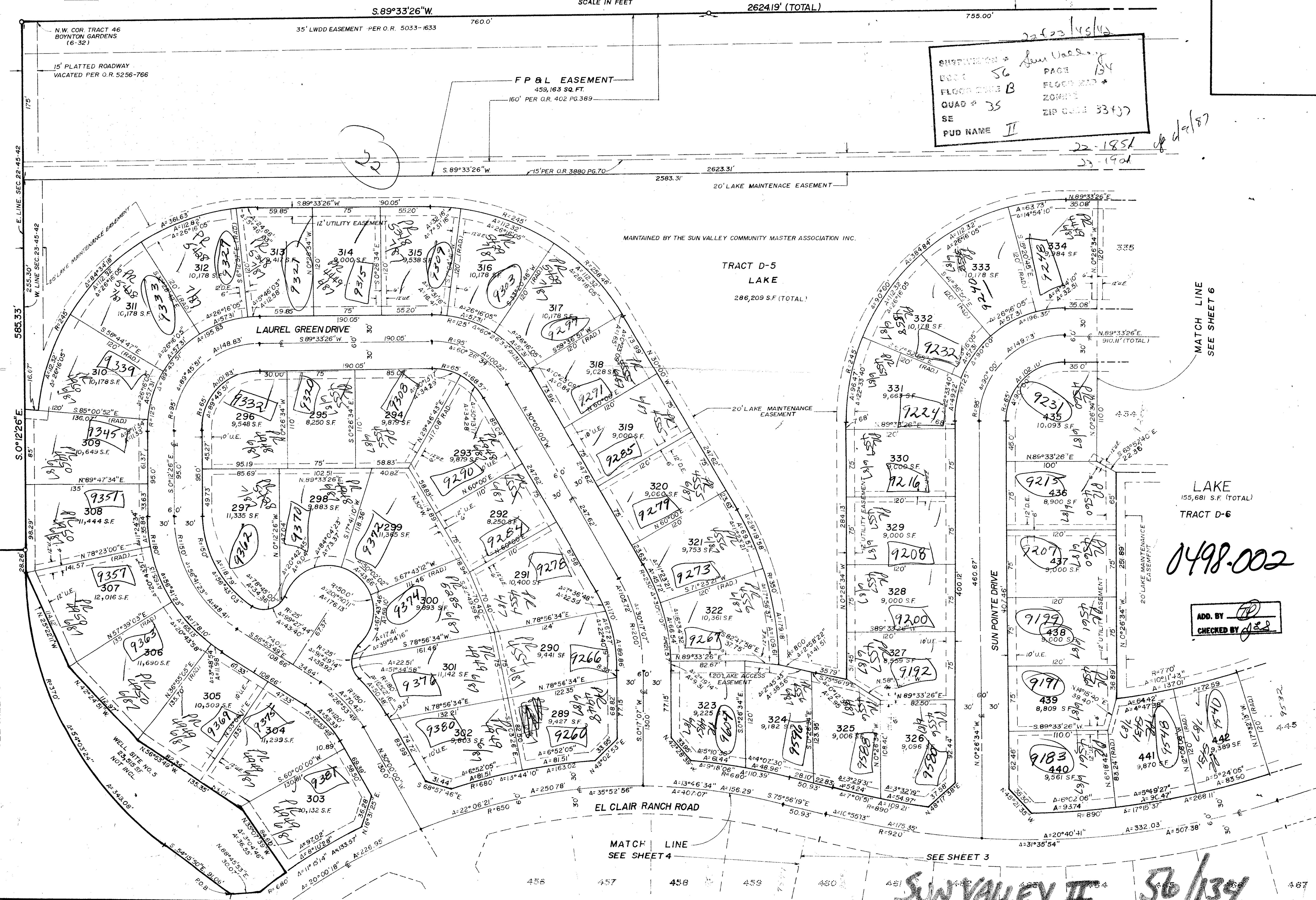
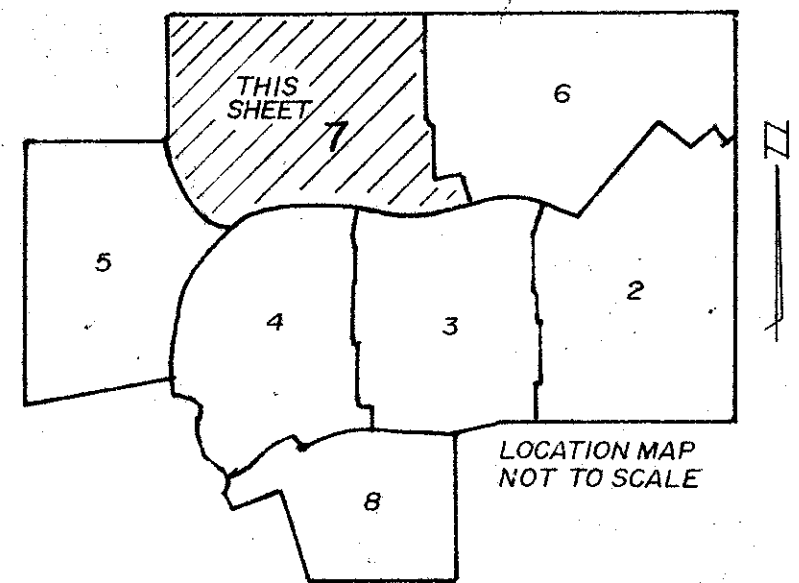
SHEET 7 OF 8

134



DEC. 1986.

BOYNTON CANAL



SUBSTANTIATION - Sun Valley II  
BOOK 56 PAGE 134  
FLOOR PLAN B FLOOR PLAN \*  
QUAD # 35 ZONING  
SE ZIP CODE 33417  
PUD NAME II

0498.002

ADD. BY [Signature]  
CHECKED BY [Signature]

UNPLATTED

MATCH LINE  
SEE SHEET 5

MATCH LINE  
SEE SHEET 4

SEE SHEET 3

MATCH LINE  
SEE SHEET 6

SUN VALLEY II 56/134