

# SUN VALLEY II

P.U.D.

IN SECTIONS 22 & 23 TWP. 45 S, RGE. 42 E. INCLUDING A REPLAT OF  
A PORTION OF BOYNTON GARDENS (6-32 PALM BEACH CO.)

PALM BEACH COUNTY FLORIDA

SURVEYORS - ENGINEERS

FORT LAUDERDALE, FLORIDA

WINNINGHAM & LIVELY, INC.



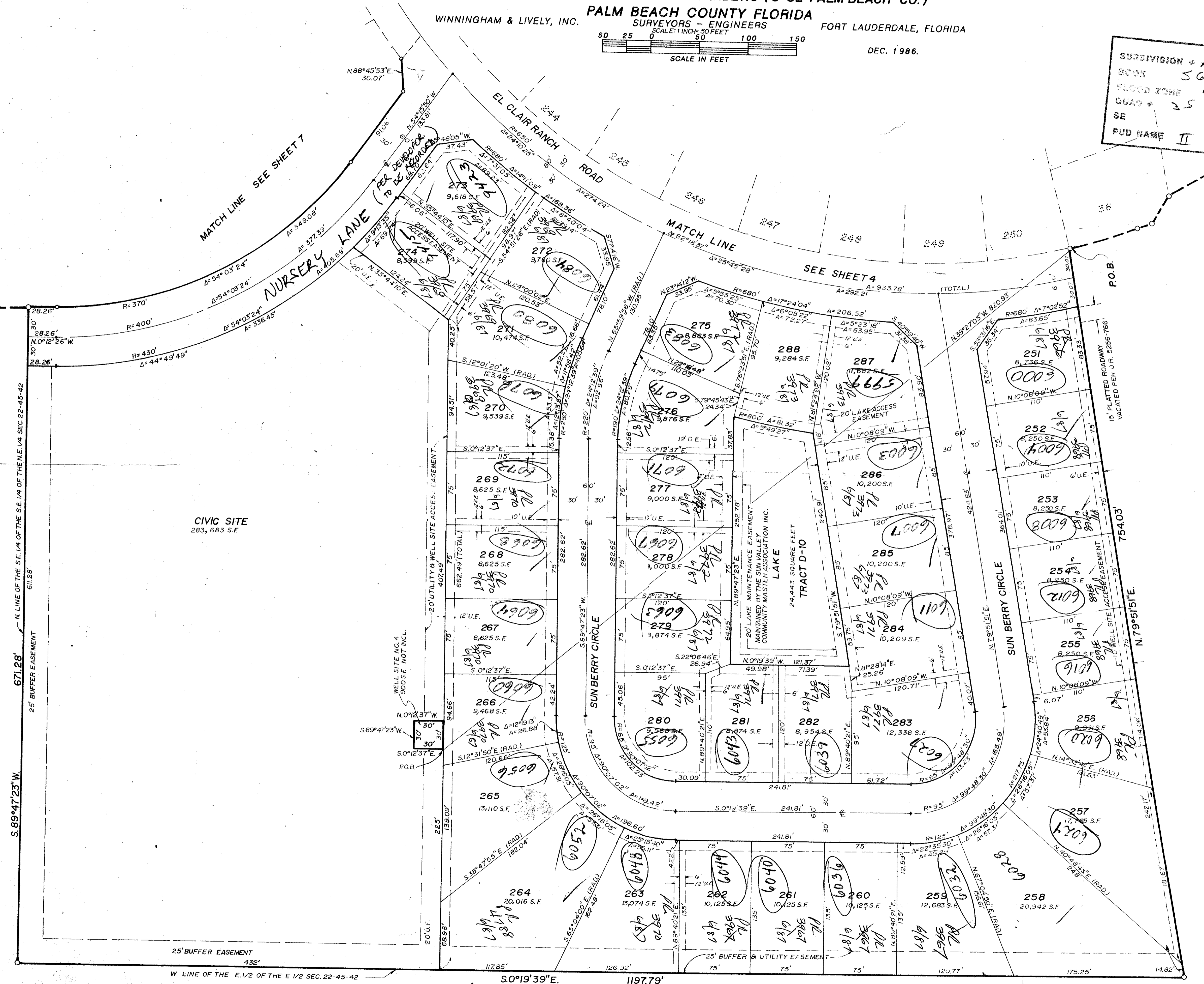
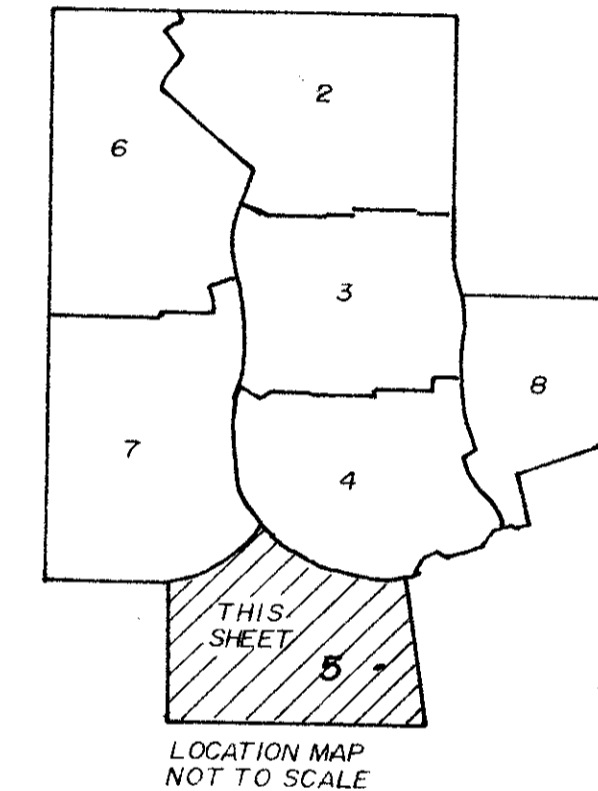
DEC. 1986.

SHEET 5 OF 8

132

*22000/15/02*  
 SUBDIVISION = *Sun Valley*  
 BOOK *56*  
 FLOOD ZONE *B*  
 QUAD = *35*  
 SE  
 PUD NAME *II*

*2201851*  
*231901*



SUN VALLEY PUD I  
(PB 55 PG. 45, 46 P.B.C.R.)

*0498-002*

ADD. BY *JP*  
 CHECKED BY *JP*

N LINE OF THE SE 1/4 OF THE SE 1/4 OF THE NE 1/4 SEC. 22-45-42

W LINE OF THE E 1/2 OF THE E 1/2 SEC. 22-45-42

BRIARRIDGE PLAT ONE (52-57/60)

SUN VALLEY II 50/132

PLAN HOLD CORPORATION - IRVINE, CALIFORNIA

UNPLATTED