

BOCA RIO HEIGHTS, PLAT NO. 3

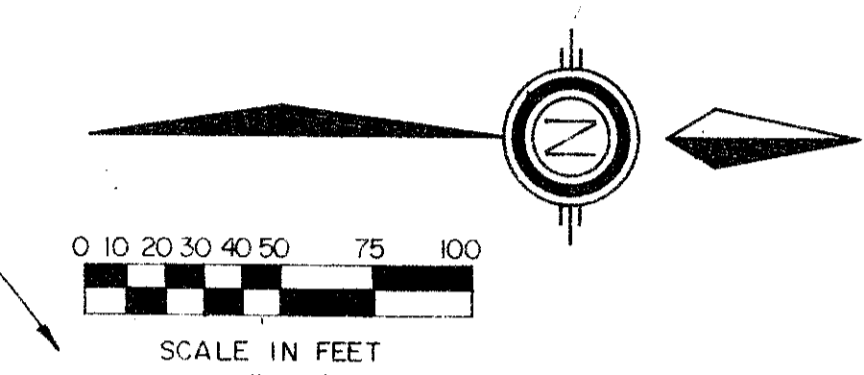
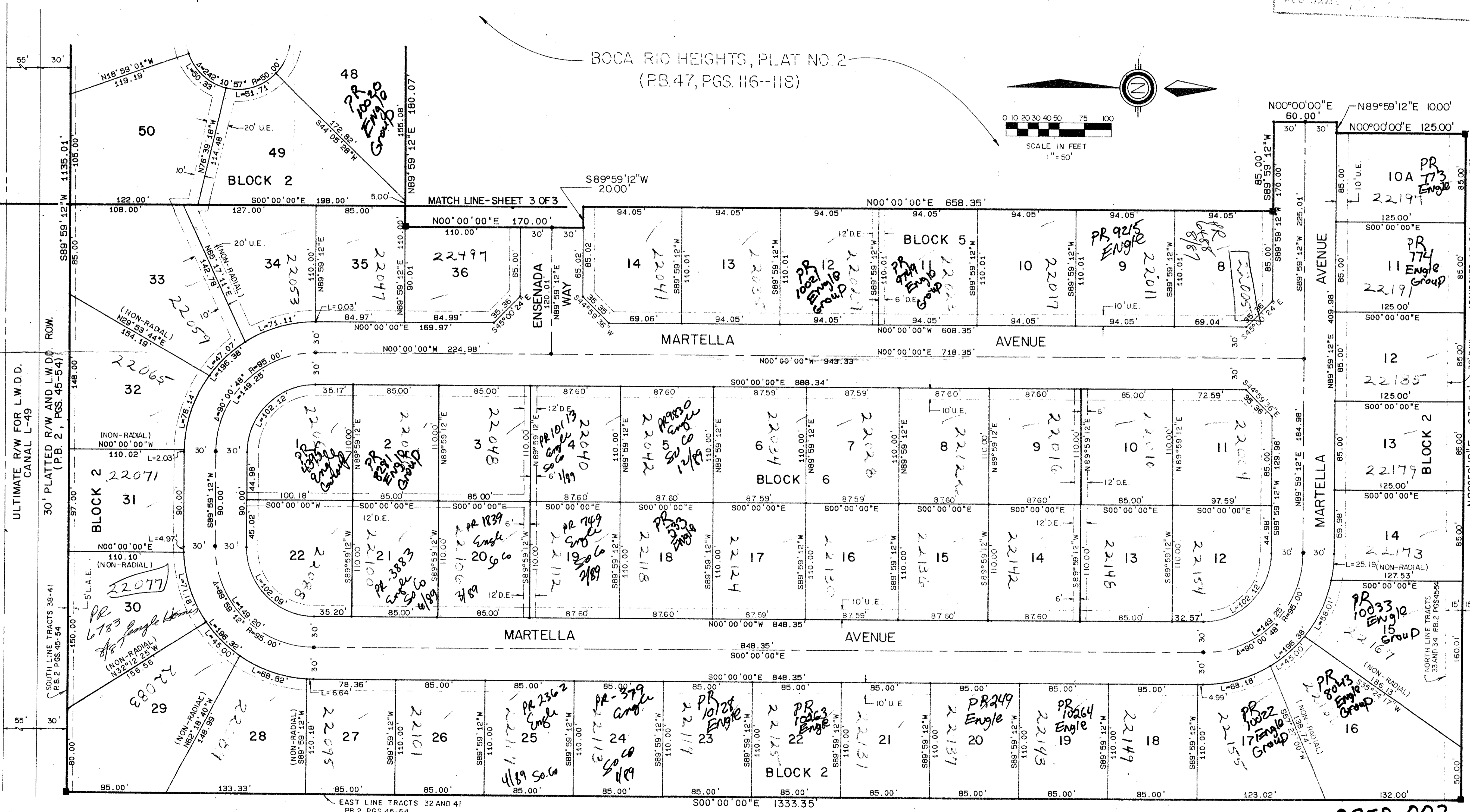
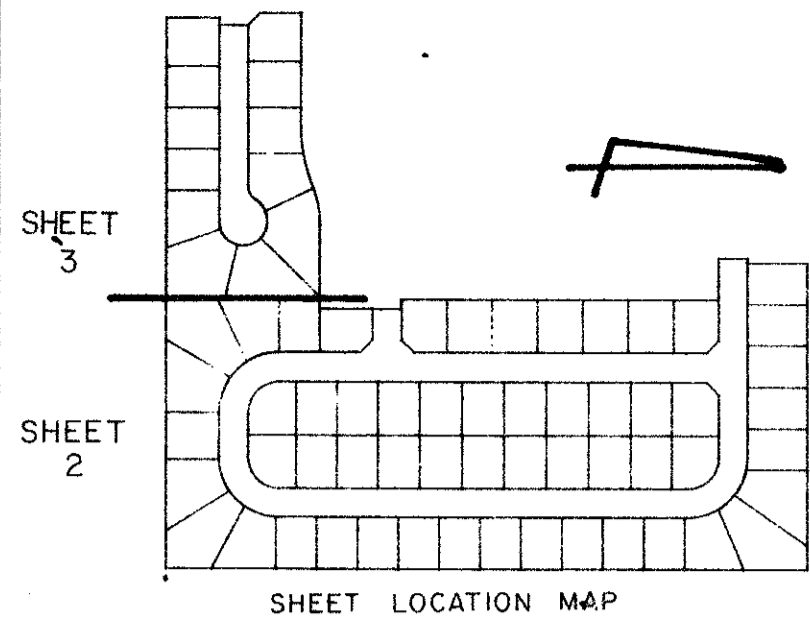
BEING A REPLAT OF A PORTION OF BLOCK 80,
PALM BEACH FARMS COMPANY PLAT NO. 3 (P.B. 2, PGS. 45 - 54)
SITUATE IN SECTION 29, TOWNSHIP 47 SOUTH, RANGE 42 EAST
PALM BEACH COUNTY, FLORIDA

NOVEMBER, 1986.

SHEET 2 OF 3.

STATE OF FLORIDA
COUNTY OF PALM BEACH
THIS PLAT WAS FILED FOR
RECORD
THIS DAY OF
MAY, 1986 AND DULY RECORDED
IN PLAT BOOK ON PAGES
AND
JOHN B. DUNKLE, CLERK
BY: _____, D.C.

Handwritten notes:
10/16/87
11/17/87
PUD NAME: Boca Rio Heights



BLOCK 80
PALM BEACH FARMS COMPANY PLAT NO. 3
(P.B. 2, PGS. 45-54)

TURNOUT REQUIRED

0350-002

56/65

BLOCK 80
PALM BEACH FARMS COMPANY PLAT NO. 3
(P.B. 2, PGS. 45-54)

ADD. BY: *JD*
CHECKED BY:

Meridian		WEST PALM BEACH, FL.	
Surveying and mapping inc.			
DRAWN	JF/MEH	DATE	6/25/86
CHECKED	WBH	SCALE	1"=50'
DRAWING NO.	85-039-3		

BOCA RIO HEIGHTS, PLAT NO. 3

PLAN-HOLD CORPORATION • IRVINE, CALIFORNIA
RECORDED BY NUMBER 07248
PLAN-HOLD CORPORATION • IRVINE, CALIFORNIA
RECORDED BY NUMBER 07248
PLAN-HOLD CORPORATION • IRVINE, CALIFORNIA
RECORDED BY NUMBER 07248