

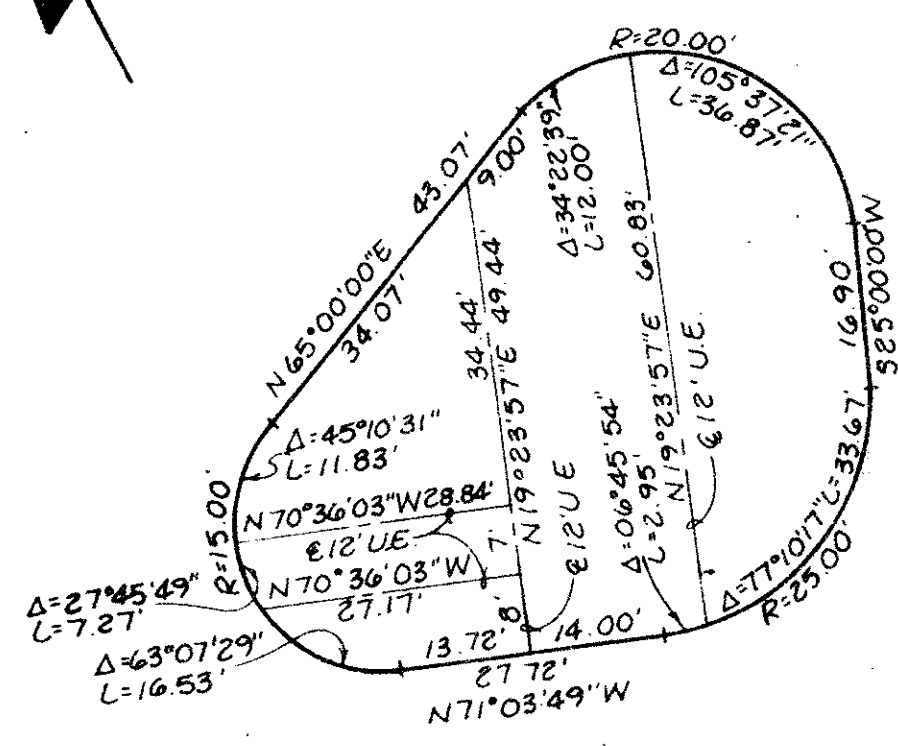
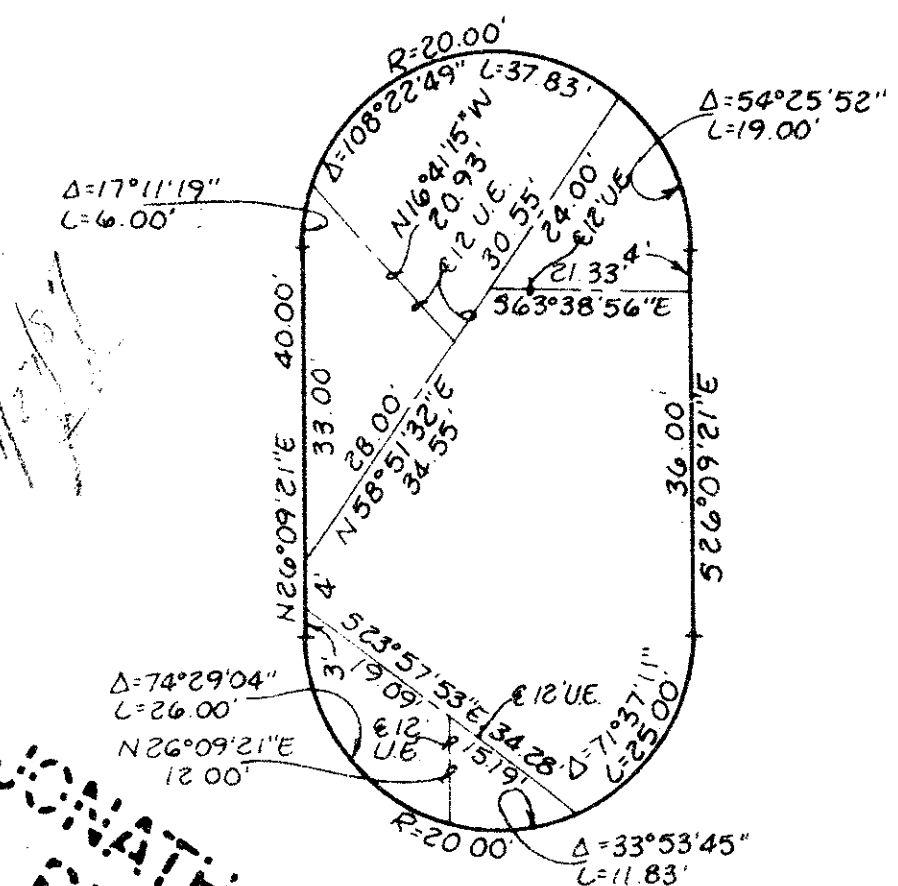
BARROW ISLAND AT JONATHAN'S LANDING P.U.D.

IN PART OF SECTION 7, TOWNSHIP 41 SOUTH, RANGE 43 EAST
PALM BEACH COUNTY, FLORIDA
IN TWO SHEET SHEET NO. 2

GEE & JENSON
ENGINEERS - ARCHITECTS - PLANNERS, INC.
WEST PALM BEACH, FLORIDA
NOVEMBER 1986



11/1/86
 SHEET NO. 54
 PLAT NO. 8
 GUSP # 11
 55
 P.U.D. NAME Jonathan's Landing



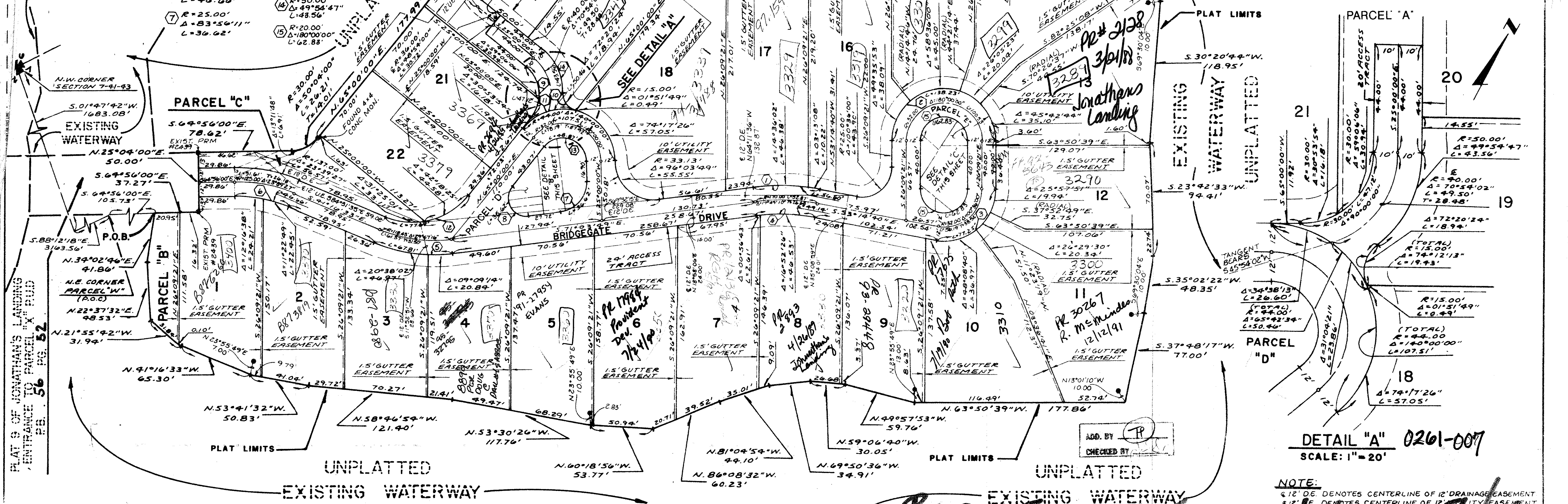
DETAIL "B"
NTS

CURVE DATA

- | | |
|---|---|
| 1 R=182.00' Δ=17°49'10" L=56.60' | 8 R=15.00' Δ=136°03'49" L=35.62' |
| 2 R=44.00' Δ=180°00'00" L=138.23' | 9 R=30.00' Δ=90°00'00" L=47.12' |
| 3 R=44.00' Δ=100°36'00" L=77.23' | 10 R=15.00' Δ=74°12'13" L=19.43' |
| 4 R=158.00' Δ=17°49'10" L=49.14' | 11 R=44.00' Δ=65°42'34" L=50.46' |
| 5 R=130.43' Δ=73°43'27" L=77.69' | 12 R=60.38' Δ=73°43'27" L=77.69' |
| 6 R=113.00' Δ=23°39'27" L=46.66' | 13 R=20.00' Δ=140°00'00" L=48.87' |
| 7 R=25.00' Δ=83°56'11" L=36.62' | 14 R=50.00' Δ=49°54'47" L=48.56' |
| | 15 R=20.00' Δ=180°00'00" L=62.83' |

PLAT EIGHT - P.U.D.
PB 48, PGS. 88-91

PLAT 9 OF JONATHAN'S LANDING
ENTRANCE TO PARCEL "X" P.U.D.
P.B. 56 PG. 82



JONATHAN'S LANDING
 PLAT FOUR-P.U.D.
 PB. 41, PGS. 183-185

STATE OF FLORIDA
COUNTY OF PALM BEACH
This plat was filed for
record at _____ M. this _____ day
of _____ 1987, and duly
recorded in Plat Book No. _____
on Pages _____ thru _____.

JOHN B. DUNKLE
Clerk Circuit Court

By: _____ D.C.

DETAIL "A" 0261-007
SCALE: 1"=20'

NOTE:
 ① 12" O.E. DENOTES CENTERLINE OF 12" DRAINAGE EASEMENT
 ② 12" U.E. DENOTES CENTERLINE OF 12" UTILITY EASEMENT

BARROW ISLAND AT JONATHAN'S LANDING 56/54