

SANDPIPER COVE P.U.D.

A PORTION OF SECTION'S 18 AND 19 TOWNSHIP 45 SOUTH, RANGE 43 EAST

PALM BEACH COUNTY, FLORIDA
IN 4 SHEETS SHEET NO. 3

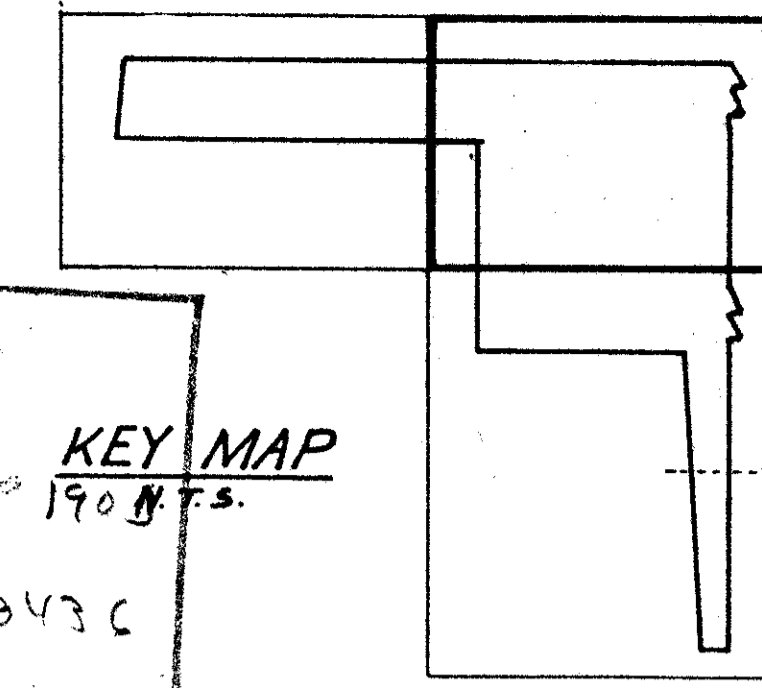
Post, Buckley, Schuh & Jernigan, Inc.

CONSULTING ENGINEERS and PLANNERS
8600 N. W. 36th STREET MIAMI, FLORIDA 33166 1-305-592-7275



DECEMBER 1986

SHEET 2 of 4 SHEET 3 of 4



STATE OF FLORIDA
COUNTY OF PALM BEACH

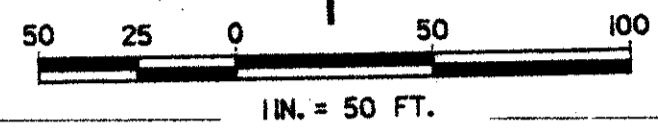
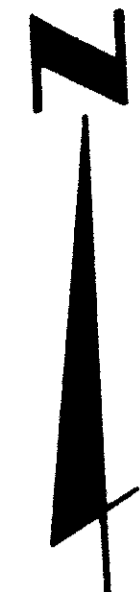
THIS PLAT WAS FILED
FOR RECORD AT _____ M.,
THIS _____ DAY OF _____, 1987,
AND DULY RECORDED IN
PLAT BOOK NO. _____ ON
PAGE _____.

JOHN B. DUNKLE
CLERK CIRCUIT COURT

BY: _____ D.C.

3

DRAWING NUMBER
56/3



SUNNY SOUTH
ESTATES
(NOT A PART) (NOT PLATTED)

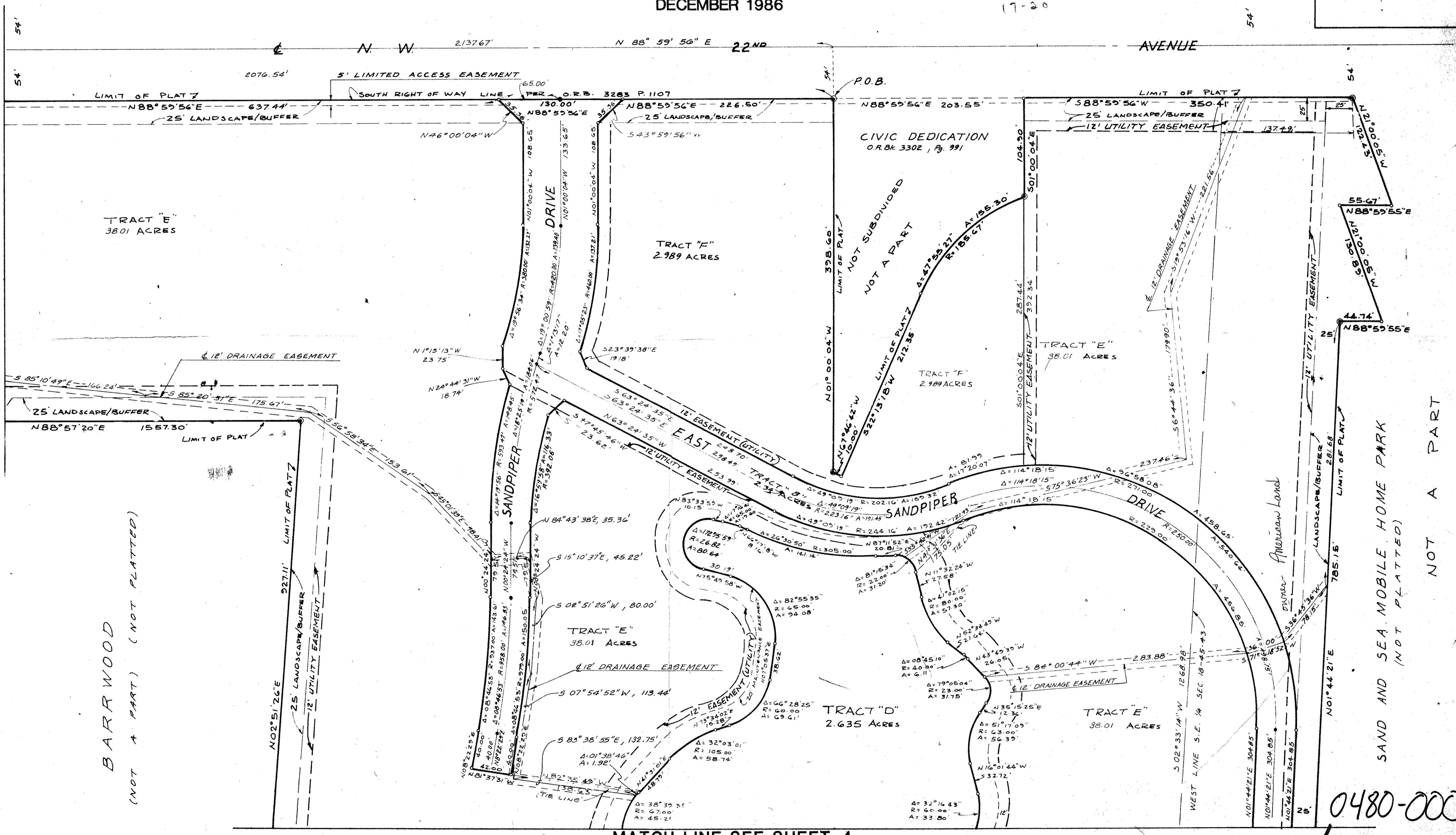
1819/45/03
DIVISION - Sandpiper Cove
JOB # 52
FLOOD ZONE B
KEY MAP
190 F.S.
POB NAME
3343C
18-19
17-20

MATCH LINE SEE SHEET 2

DRAWING NUMBER

DRAWING NUMBER

DRAWING NUMBER



BARRWOOD
(NOT A PART) (NOT PLATTED)

SAND AND SEA MOBILE HOME PARK
(NOT PLATTED)
NOT A PART

MATCH LINE SEE SHEET 4

SANDPIPER COVE P.U.D. 56/3
0480-000