

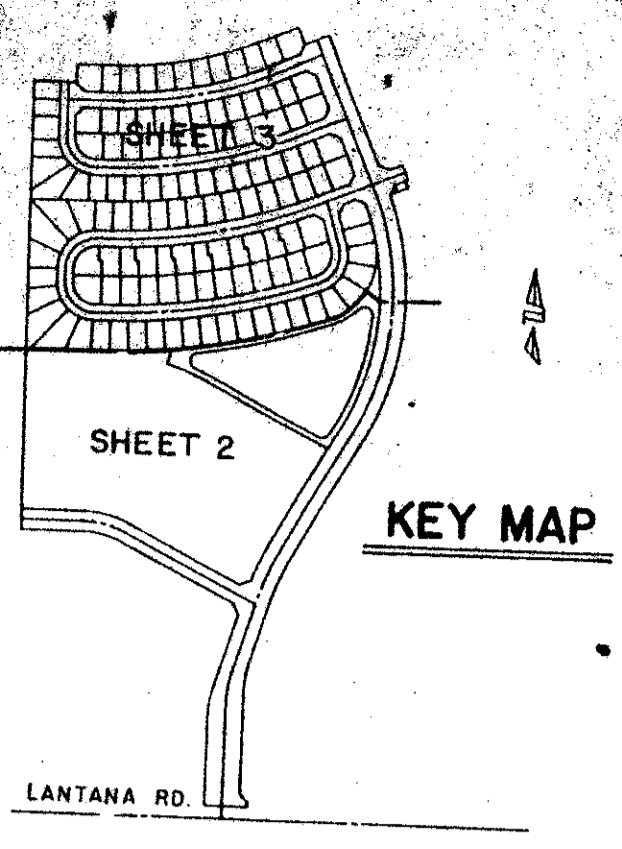
DRAWING NUMBER
55/168

A PLANNED UNIT DEVELOPMENT LANTANA HOMES PLAT 1

PALM BEACH COUNTY, FLORIDA
SHEET 2 OF 3
JANUARY, 1987

168

STATE OF FLORIDA
COUNTY OF PALM BEACH
This Plat was filed for record at
M. this _____ day of _____ 19____
and duly recorded in Plat Book No. _____
on Page _____
By John B. Dunkle, Clerk Circuit Court
D.C.



DRAWING NUMBER

DRAWING NUMBER

DRAWING NUMBER

HOMES OF LEE'S CROSSING PLAT NO. 3
(PLAT BOOK 53, PGS. 378-4)

N 09°31'27" W 1385.46' O.A.

N 89°28'40" E 258.82'

MATCH TO SHEET 3

TRACT "A"
(RESERVED FOR FUTURE RESIDENTIAL USE)
TO BE REPLATTED PRIOR TO CONSTRUCTION

WATER MANAGEMENT TRACT "W"
(TO BE MAINTAINED BY LANTANA HOMES HOMEOWNERS ASSOC., INC.)

AVENUE

EDGECLIFF

AVENUE

OAK

ROYAL

DRIVE

LANTANA ROAD

34635/41/42
SUBDIVISION * *Lantana Homes*
BOOK 55 PAGE 168
FLOOD ZONE 13 FLOOD MAP *
QUAD # 33 ZONING
PUD NAME *PLAT 1*
34-170A 33467
35-175A 33463

SIDEWALK REQUIRED

0421-001

MICHAEL B. SCHORAH & ASSOCIATES, INC.
ENGINEERS • PLANNERS • DEVELOPMENT CONSULTANTS
TEL. (305) 988-0080
1850 FOREST HILL BLVD., SUITE 205
WEST PALM BEACH, FLORIDA 33406

LANTANA HOMES PLAT 1 55/168