

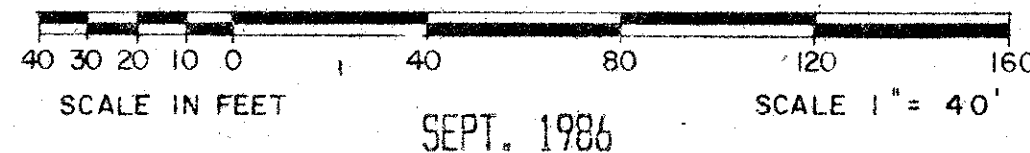
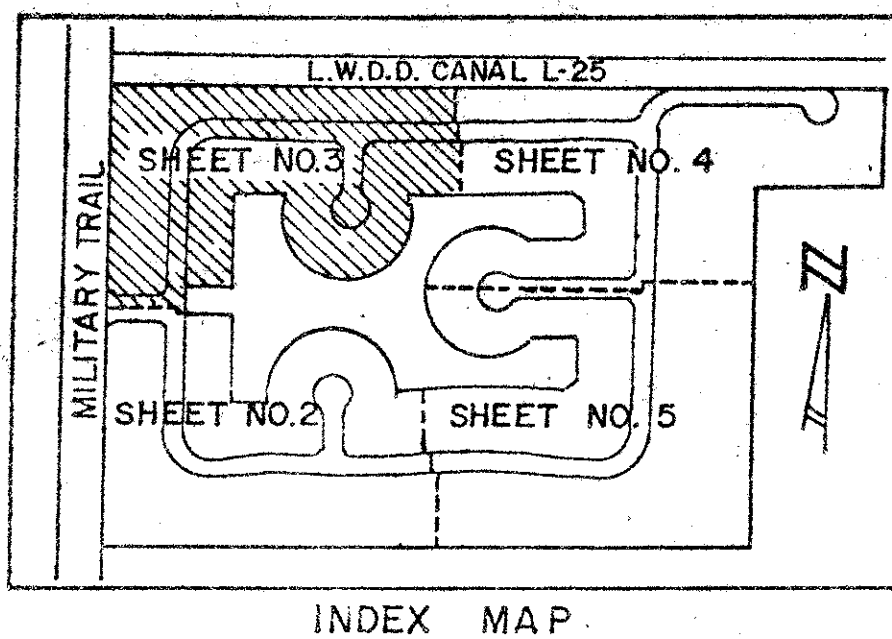
55/139

139

# EQUESTRIAN PLAT II

## A REPLAT OF TRACT "B" OF EQUESTRIAN PLAT

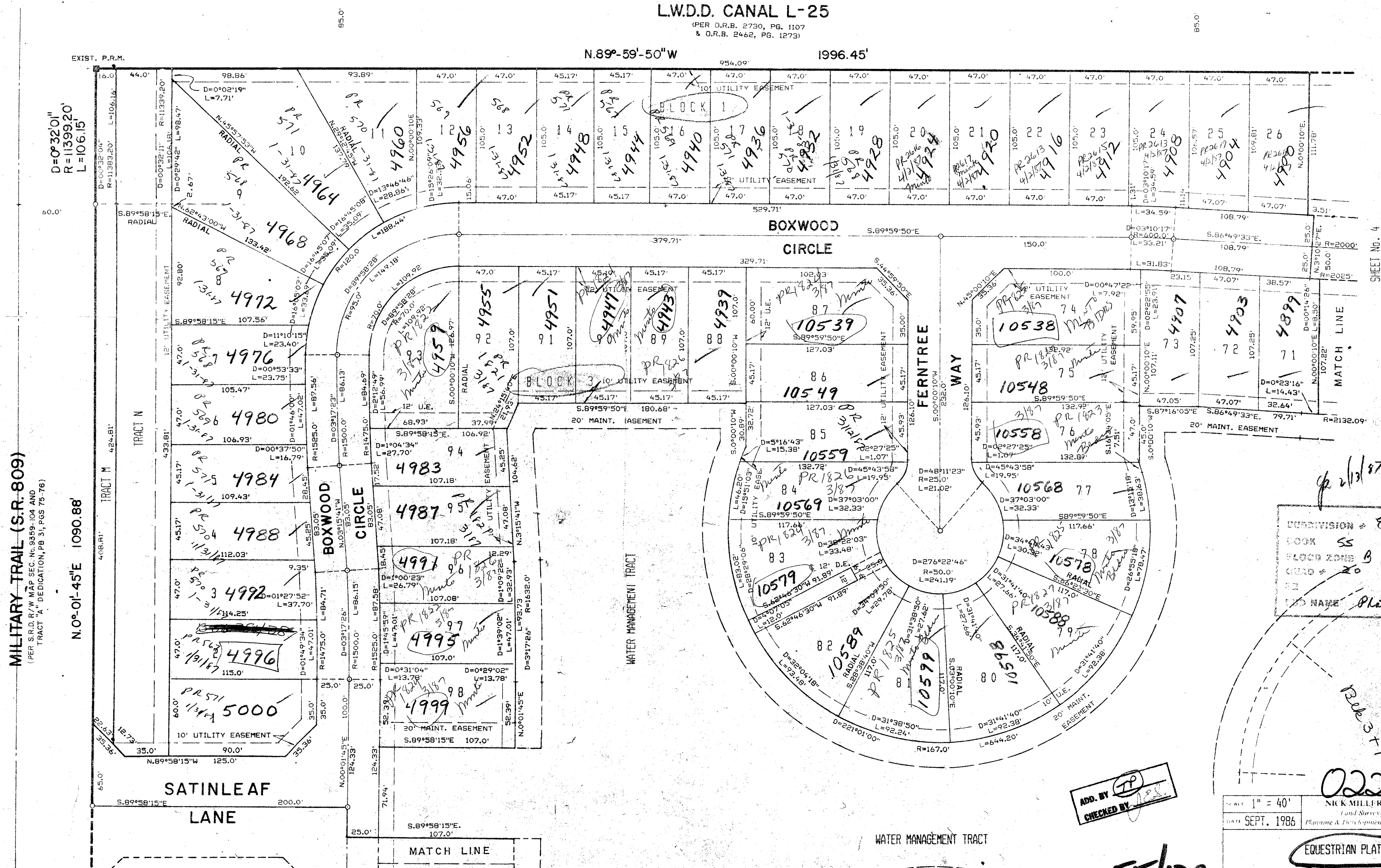
PER PLAT BOOK 31, PAGES 75 & 76  
IN SECTION 25, TWP. 45 S., RGE. 42 E.  
PALM BEACH COUNTY, FLORIDA.  
A PORTION OF A P.U.D. IN COUNTRY CLUB TRAIL  
SHEET 3 OF 5 SHEETS



L.W.D.D. CANAL L-25

(PER O.R.B. 2730, PG. 1107 & O.R.B. 2462, PG. 1273)

N.89°-59'-50"W 1996.45'



DRAWING NUMBER

DRAWING NUMBER

DRAWING NUMBER

MILITARY TRAIL (S.R. 809)  
(PER S.R.D./W MAP SEC. No. 9359-104 AND TRACT "A" DEDICATION, PB 31, PGS 75-76)

N.0°-01'-45"E 1090.88'

Subdivision: Equestrian  
BOOK 31 PAGE 139  
FLOOR ZONE B FLOOR MAP # 190A  
GRID # 20  
ZIP CODE 33436  
L.S. NAME Plat II

ADD. BY [Signature]  
CHECKED BY [Signature]

0226-004

1" = 40'  
DATE: SEPT. 1986  
NICK MILLER, INC.  
Land Surveying  
Planning & Development Consultants, F.C.M.  
EQUESTRIAN PLAT II  
DRAWN BY  
SUITE 105, 2560 RCA BLVD.  
PALM BEACH GARDENS, FL 33410 (305) 627-5200  
DRAWING NUMBER 86-0048

55/139