

DRAWING NUMBER  
**55/138**

# EQUESTRIAN PLAT II

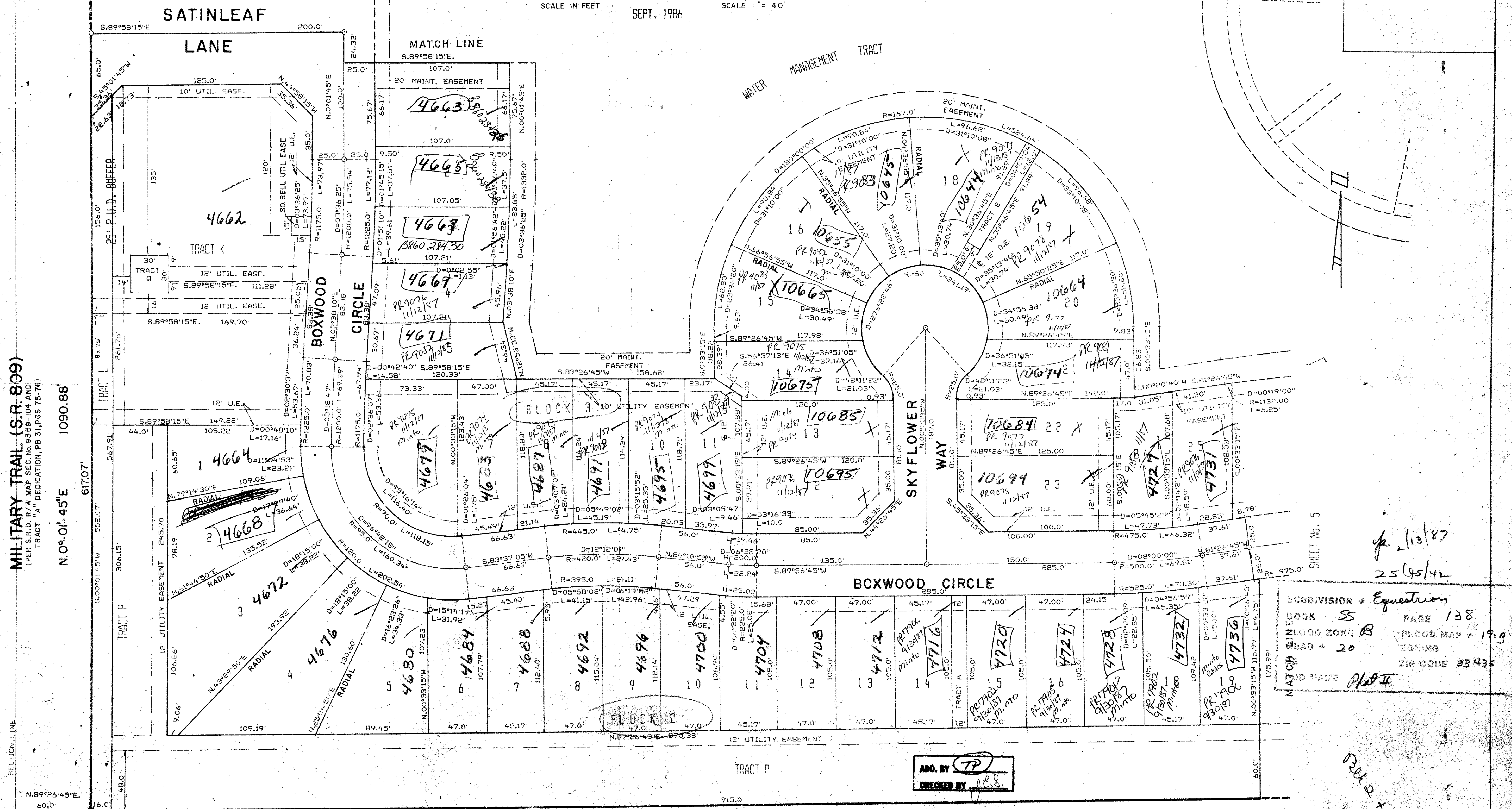
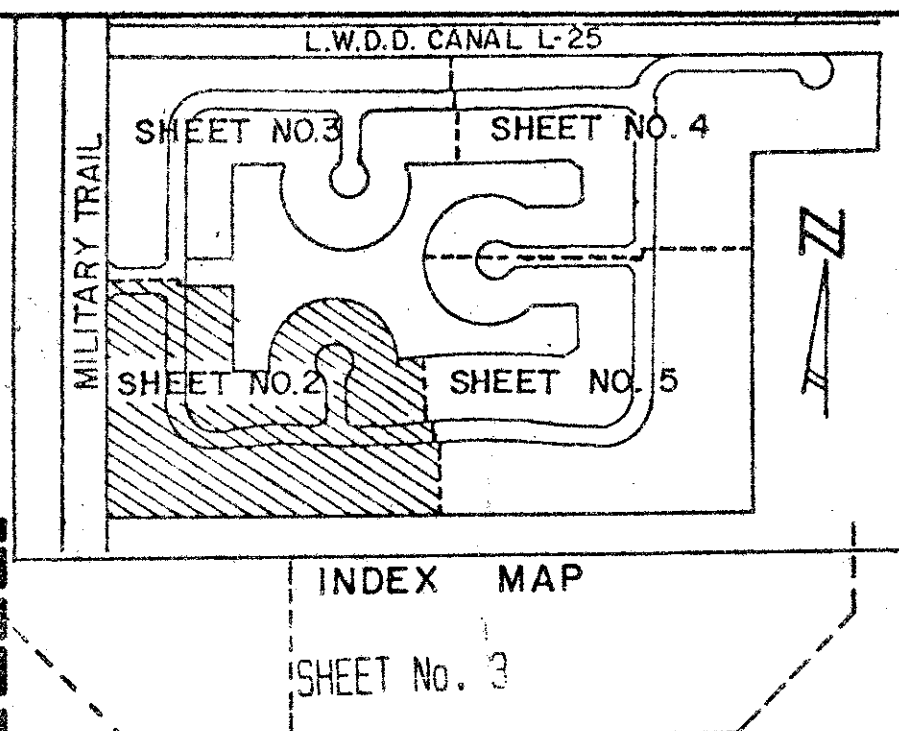
## A REPLAT OF TRACT "B" OF EQUESTRIAN PLAT

PER PLAT BOOK 31, PAGES 75 & 76  
IN SECTION 25, TWP. 45 S., RGE. 42 E.

**138**

PALM BEACH COUNTY, FLORIDA  
A PORTION OF A P.U.D. IN COUNTRY CLUB TRAIL  
SHEET 2 OF 5 SHEETS

SCALE IN FEET  
40 30 20 10 0 40 80 120 160  
SEPT. 1986  
SCALE 1" = 40'



MILITARY TRAIL (S.R. 809)  
(PER S.R.D. R/W MAP SEC. NO. 9359-104 AND  
TRACT "A" DEDICATION, PB 31, PGS 75-76)

N.0°-01'-45"E 1090.88  
617.07

N.89°-26'-45"E 1649.04'

THE VILLAS OF PINE TREE  
PB 40, PGS 24-26

0226-004

SCALE: 1" = 40'	NICK MILLER, INC. Land Surveying	DRAWN BY:
DATE: SEPT. 1986	Planning & Development Consultants	CHK:
<b>EQUESTRIAN PLAT II</b>		
SUITE 105, 2560 RCA BLVD. PALM BEACH GARDENS, FL 33410 (305) 627-3200		DRAWING NUMBER <b>86-0048</b>

**55/138**

DRAWING NUMBER

DRAWING NUMBER

DRAWING NUMBER

PLAN HOLD CORPORATION • IRVINE, CALIFORNIA  
REGISTERED BY NUMBER 07548

PLAN HOLD CORPORATION • IRVINE, CALIFORNIA  
REGISTERED BY NUMBER 07548

PLAN HOLD CORPORATION • IRVINE, CALIFORNIA  
REGISTERED BY NUMBER 07548

S.W. CORNER OF SEC. 25/45/42  
PER EQUESTRIAN PLAT

1/13/87  
25/45/42

SUBDIVISION: Equestrian  
BLOCK: 55  
FLOOD ZONE: B  
HEAD: 20  
FORMING  
ZIP CODE: 33435

ADD. BY: [Signature]  
CHECKED BY: [Signature]