

55/118

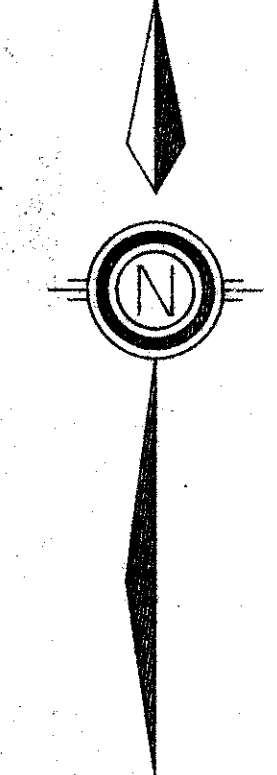
CROSTOWN PLAZA

A P.C.D.
SITUATE IN SECTION 24, TOWNSHIP 43 SOUTH, RANGE 42 EAST
PALM BEACH COUNTY, FLORIDA

118

SHEET 2 OF 2

STATE OF FLORIDA
COUNTY OF PALM BEACH
THIS PLAT WAS FILED FOR
RECORD AT _____ DAY OF _____
AD. 1987 AND DULY RECORDED
IN PLAT BOOK _____ ON PAGES
_____ AND _____
JOHN B. DUNKLE, CLERK
BY: _____ D.C.



SCALE: 1" = 50'
0 20 40 60

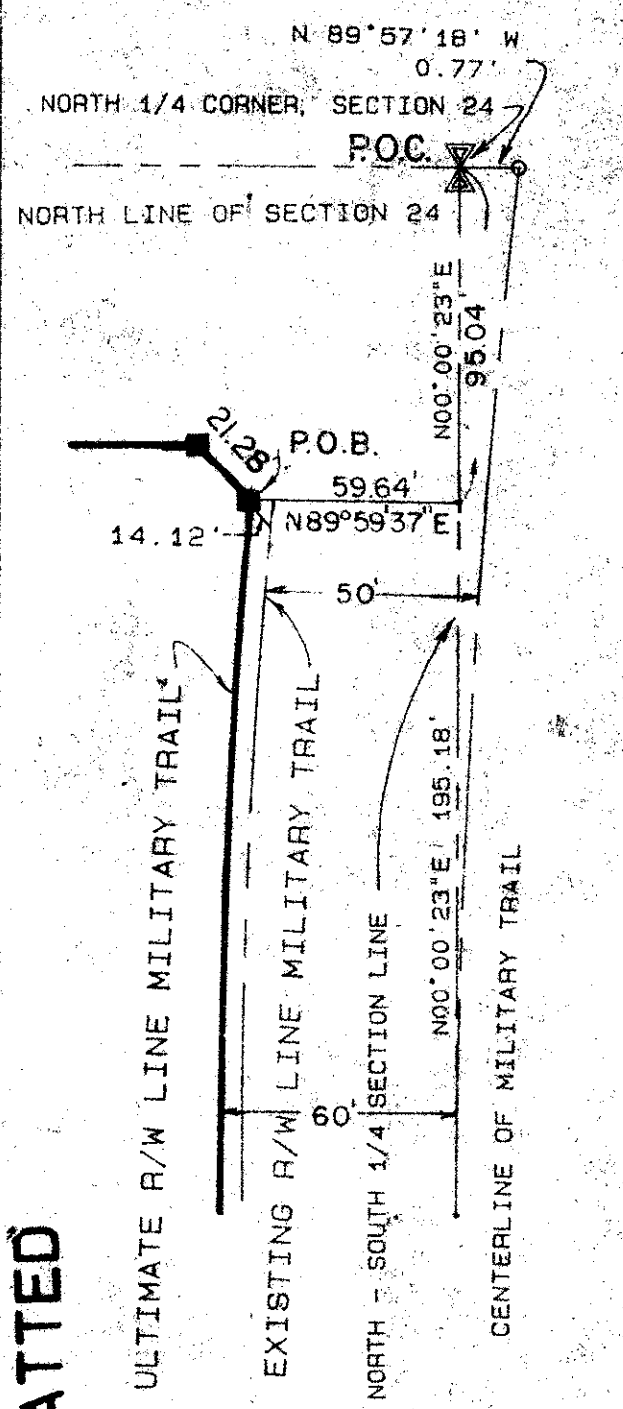
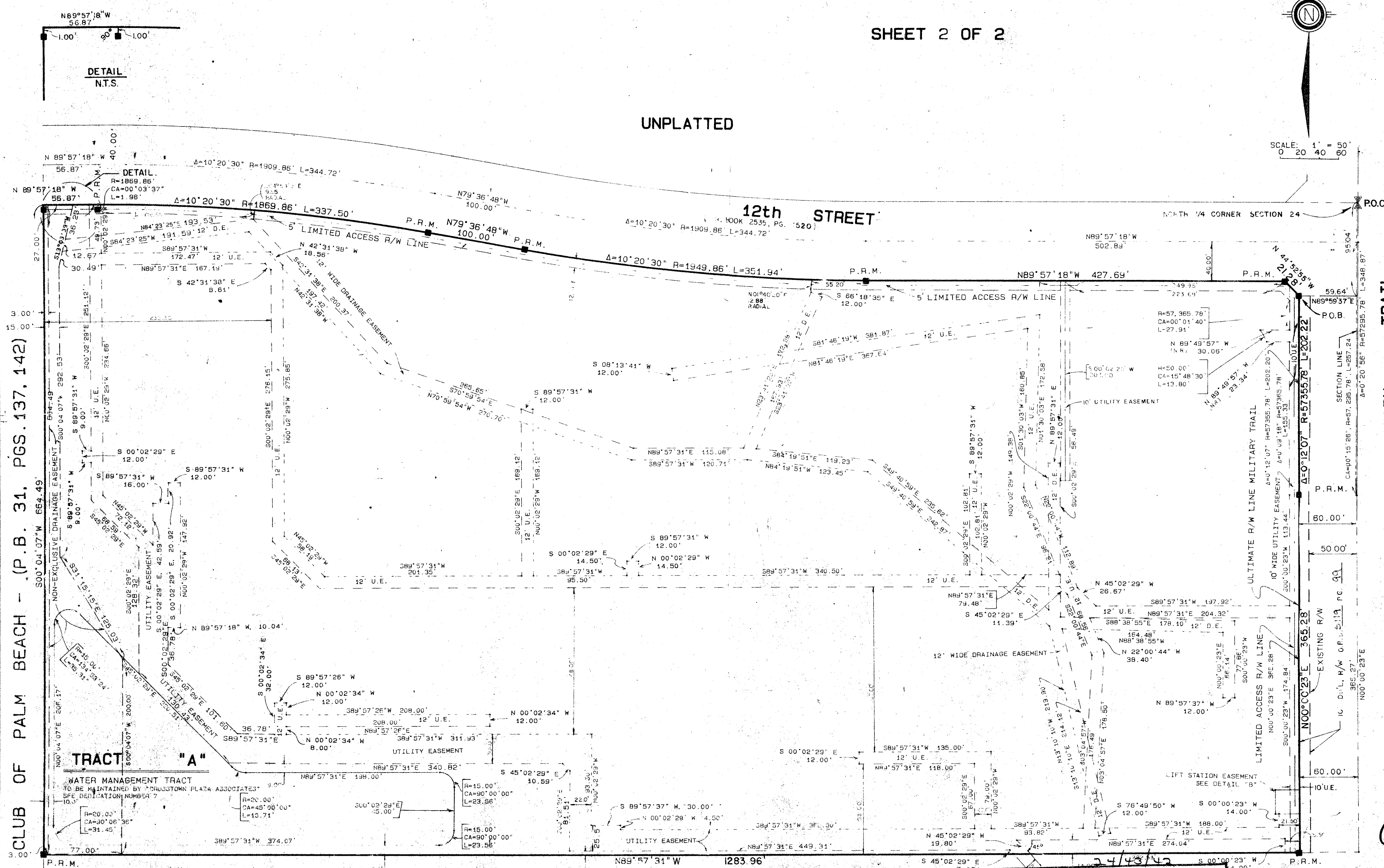
UNPLATTED

MILITARY TRAIL

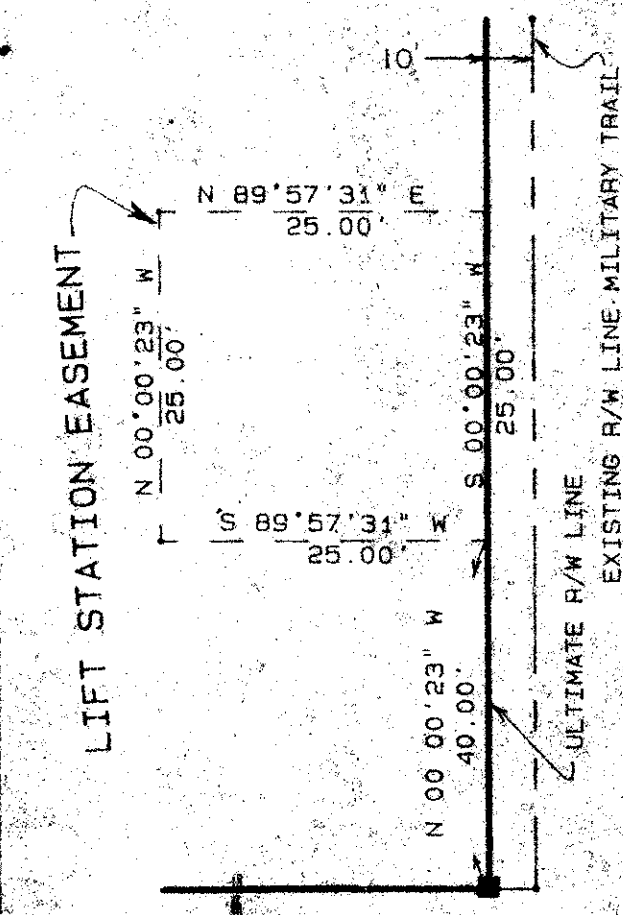
UNPLATTED

LIFT STATION EASEMENT

0508-000
55/118



DETAIL "A"
NOT TO SCALE



DETAIL "B"
NOT TO SCALE

TENNIS CLUB OF PALM BEACH - (P.B. 31, PGS. 137, 142)

TRACT "A"
WATER MANAGEMENT TRACT
TO BE MAINTAINED BY CROSTOWN PLAZA ASSOCIATES
SPE DEDICATION NUMBER 7
10.5

UNPLATTED

SUBDIVISION * *Crostown Plaza*
BOOK 55 PAGE 118
FLOOD ZONE B FLOOD MAP # 155B
QUAD # 31 ZONING
SE ZIP CODE 33417
PUD NAME

Meridian		WEST PALM BEACH, FLORIDA	
Surveying and mapping inc.			
DRAWN P.A.D.	DATE 8/11/86		
CHECKED W.B.H.	SCALE 1" = 50'	CROSTOWN PLAT	
DRAWING NO	85-021PLAT		

DRAWING NUMBER

DRAWING NUMBER

DRAWING NUMBER

PLAN-HOLD CORPORATION * IRVINE, CALIFORNIA
REGISTERED PROFESSIONAL SURVEYOR
RECORDING NUMBER 07848
FROM BOOK OF PAGES 08, 09, 10, 11, 12, 13, 14, 15, 16, 17, 18, 19, 20, 21, 22, 23, 24, 25, 26, 27, 28, 29, 30, 31, 32, 33, 34, 35, 36, 37, 38, 39, 40, 41, 42, 43, 44, 45, 46, 47, 48, 49, 50, 51, 52, 53, 54, 55, 56, 57, 58, 59, 60, 61, 62, 63, 64, 65, 66, 67, 68, 69, 70, 71, 72, 73, 74, 75, 76, 77, 78, 79, 80, 81, 82, 83, 84, 85, 86, 87, 88, 89, 90, 91, 92, 93, 94, 95, 96, 97, 98, 99, 100