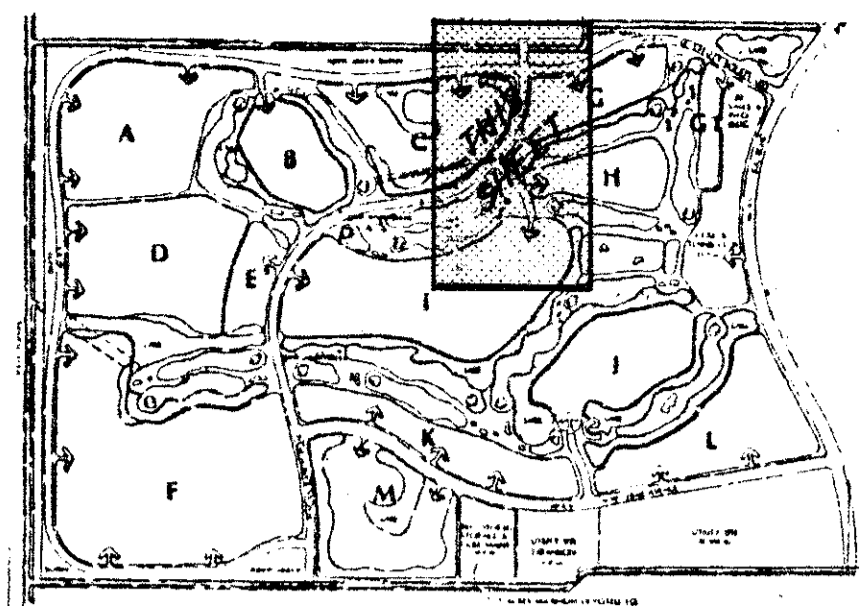


55/15

DRAWING NUMBER

DRAWING NUMBER

DRAWING NUMBER



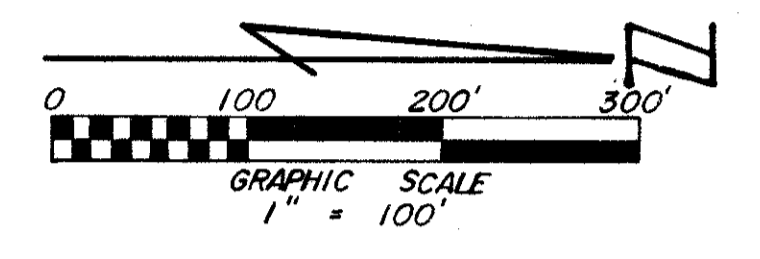
# ABERDEEN - PLAT NO. 2

## A PORTION OF A (P.U.D.)

### SECTIONS 15 & 16, TOWNSHIP 45 SOUTH, RANGE 42 EAST

PALM BEACH COUNTY, FLORIDA - AUG., 1986  
BEING A REPLAT OF A PORTION OF BLOCK 47 AND THE SCHOOL TRACT LYING IN SECTION 16, TOWNSHIP 45 SOUTH, RANGE 42 EAST,  
PALM BEACH FARMS CO. PLAT NO. 3, RECORDED IN PLAT BOOK 2, PAGE 49, PUBLIC RECORDS OF PALM BEACH COUNTY, FLORIDA  
SEE SHEET NO. 6

STATE OF FLORIDA }  
COUNTY OF PALM BEACH } ss  
This Plat was filed for record at \_\_\_\_\_ M.  
this \_\_\_\_\_ day of \_\_\_\_\_  
19 \_\_\_\_\_, and duly recorded in Plat Book No. \_\_\_\_\_  
on page \_\_\_\_\_  
JOHN B. DUNKLE, Clerk Circuit Court  
By \_\_\_\_\_, D.C.



KEY MAP  
NOT TO SCALE

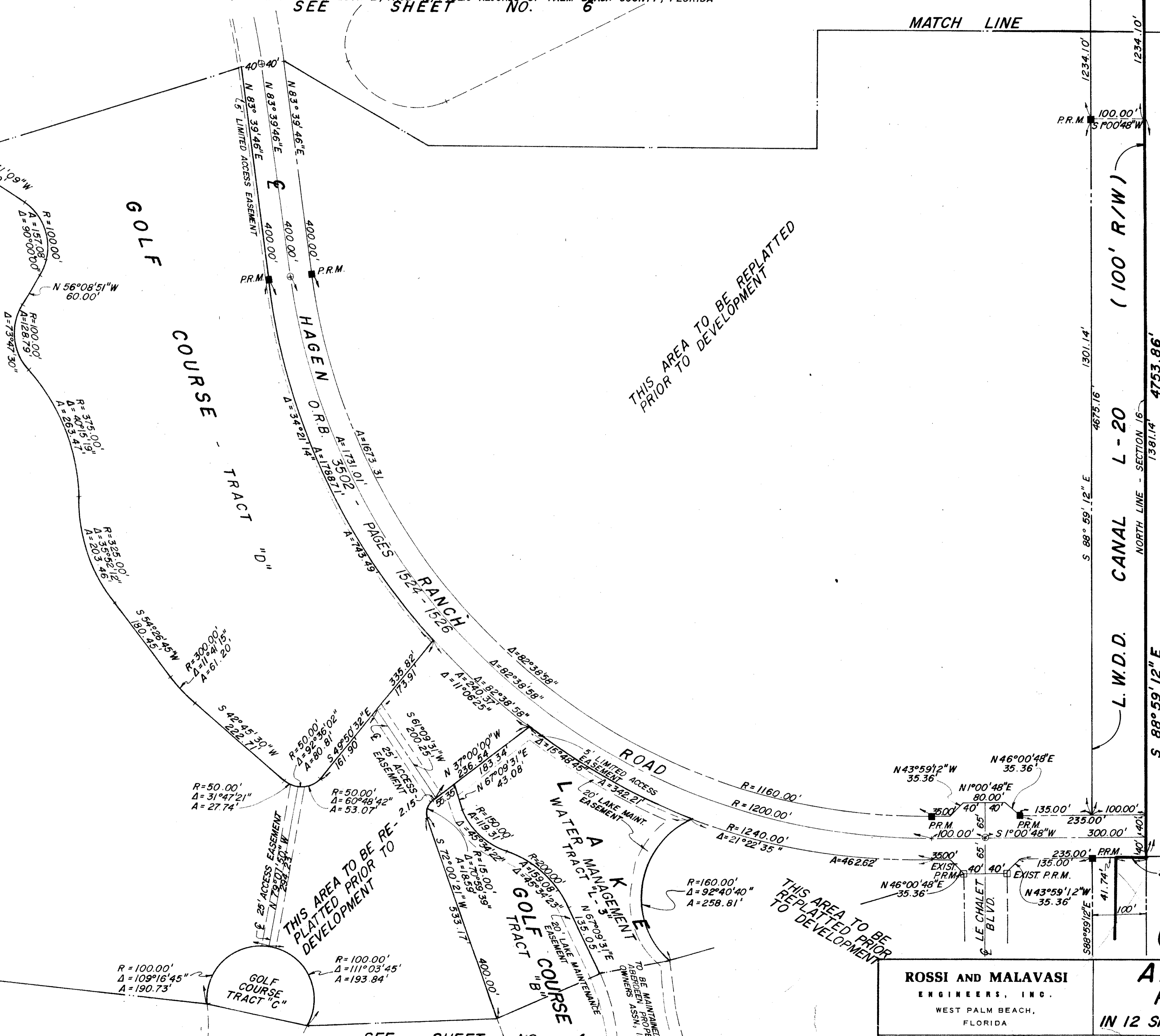
MATCH LINE

MATCH LINE

SEE SHEET NO. 10

MATCH LINE

THIS AREA TO BE REPLATTED  
PRIOR TO DEVELOPMENT



THIS AREA TO BE REPLATTED  
PRIOR TO DEVELOPMENT

THIS AREA TO BE RE-  
PLATTED PRIOR TO  
DEVELOPMENT

THIS AREA TO BE  
REPLATTED PRIOR  
TO DEVELOPMENT

L.W.D.D. CANAL (100' R/W)  
NORTH LINE - SECTION 16  
1381.14' 4753.86'  
S 88° 59' 12" E  
S 88° 59' 12" E  
4675.16'  
1301.14'

MATCH LINE

SEE SHEET NO. 4

MATCH LINE  
S 1° 00' 48" W 58.26'  
55/15  
0270-306

ROSSI AND MALAVASI ENGINEERS, INC. WEST PALM BEACH, FLORIDA		ABERDEEN PLAT NO. 2 IN 12 SHEETS SHEET NO. 5	
Date	AUGUST, 1986	Designed	T. J. CURBELO
Drawn	D. FREDERICK	Scale	1" = 100'
Checked		Job No.	
File No.		Sheet	5 of 12