

DRAWING NUMBER
55/3

DRAWING NUMBER

DRAWING NUMBER

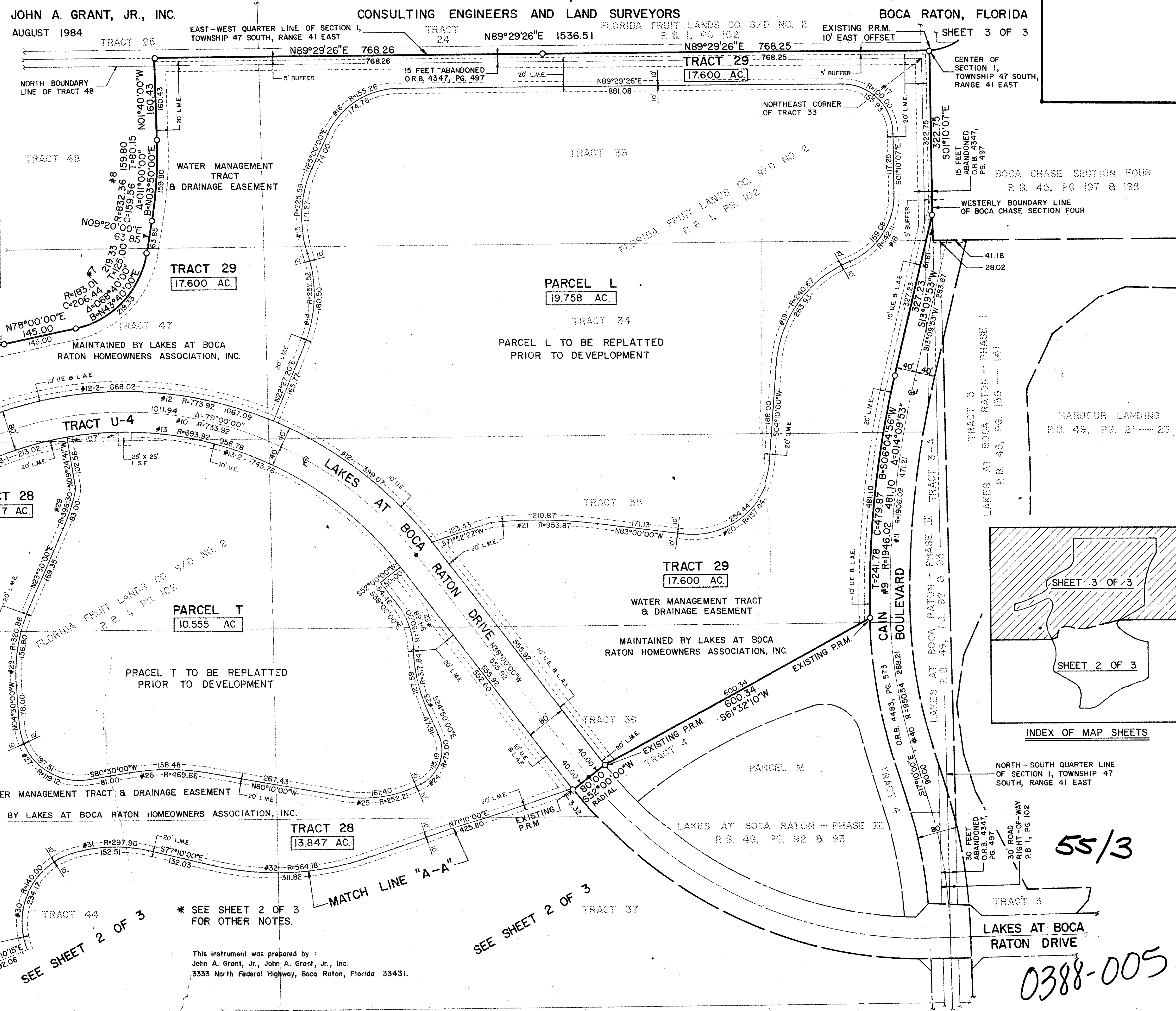
DRAWING NUMBER

CURVE TABLE

NUMBER	RADIUS	ARC	DELTA	TANGENT	CHORD	CHORD-BEARING
1	332.61	337.67	058°10'00"	185.00	323.35	N05°05'00"W
2	116.43	237.75	117°00'00"	190.00	198.55	N34°30'00"W
3	305.95	184.22	034°30'00"	95.00	181.45	S69°45'00"W
4	536.24	199.66	021°20'00"	101.00	198.51	S63°10'00"W
5	875.71	262.26	017°09'33"	132.12	261.28	N71°34'47"E
6	374.88	232.27	035°30'00"	120.00	228.58	N60°15'00"E
7	183.01	219.33	068°40'00"	125.00	206.44	N43°40'00"E
8	832.36	159.80	011°00'00"	80.15	159.56	N03°50'00"E
9	1946.02	481.10	014°09'53"	241.78	479.87	S06°04'56"W
10	733.92	1011.94	079°00'00"	605.00	933.66	N77°30'00"W
11	1906.02	471.21	014°09'53"	236.81	470.01	S06°04'56"W
12	773.92	1067.09	079°00'00"	637.97	984.55	N77°30'00"W
12-1	399.07	029°32'40"	204.08	394.67	N52°46'20"W	
12-2	668.02	049°27'20"	356.42	647.47	S87°43'40"W	
13	693.92	956.78	079°00'00"	572.02	882.77	S77°30'00"E
13-1	213.02	017°35'19"	107.35	212.18	N71°47'40"E	
13-2	743.76	061°24'41"	412.11	708.67	S68°42'20"E	
14	252.52	180.50	040°57'20"	94.30	176.68	N01°58'40"E
15	225.59	171.27	043°30'00"	90.00	167.19	N03°15'00"E
16	155.26	174.76	064°29'26"	97.94	165.68	N57°14'43"E
17	100.00	155.93	089°20'27"	98.86	140.61	S45°50'20"E
18	142.11	169.08	068°10'07"	96.16	159.28	S32°54'57"W
19	240.67	263.93	062°50'00"	147.00	250.90	S35°35'00"W
20	157.04	254.44	092°50'00"	165.00	227.51	S50°35'00"W
21	953.87	210.87	012°40'00"	105.87	210.45	N89°20'00"W
22	150.00	94.68	036°10'00"	48.98	93.12	S19°55'00"E
23	317.84	127.59	023°00'00"	64.67	126.73	S13°20'00"E
24	75.00	115.19	088°00'00"	72.43	104.20	S19°10'00"W
25	252.21	161.40	036°40'00"	83.57	158.66	S81°30'00"W
26	469.66	158.48	019°20'00"	80.00	157.73	N89°50'00"W
27	119.12	197.51	028°00'00"	130.00	175.65	N52°00'00"W
28	320.86	156.80	028°00'00"	80.00	155.25	N09°30'00"E
29	396.30	83.00	012°00'00"	41.65	82.85	N17°30'00"E
30	140.00	234.17	095°50'00"	155.03	207.81	N25°35'00"E
31	297.90	152.51	029°20'00"	77.97	150.85	N88°10'00"E
32	564.18	311.82	031°40'00"	160.00	307.86	N87°00'00"E
40	950.54	268.21	016°10'00"	135.00	267.32	S09°05'00"E

A PART OF A P.U.D.
LAKES AT BOCA RATON — PHASE III
 A PLAT OF A PORTION OF SECTION 1, TOWNSHIP 47 SOUTH, RANGE 41 EAST
 AND ALSO BEING A REPLAT OF A PORTION OF SAID SECTION 1 IN FLORIDA FRUIT LANDS
 COMPANY'S SUBDIVISION NO. 2 AS RECORDED IN PLAT BOOK 1, PAGE 102 OF THE
 PUBLIC RECORDS OF PALM BEACH COUNTY, FLORIDA
 PALM BEACH COUNTY, FLORIDA

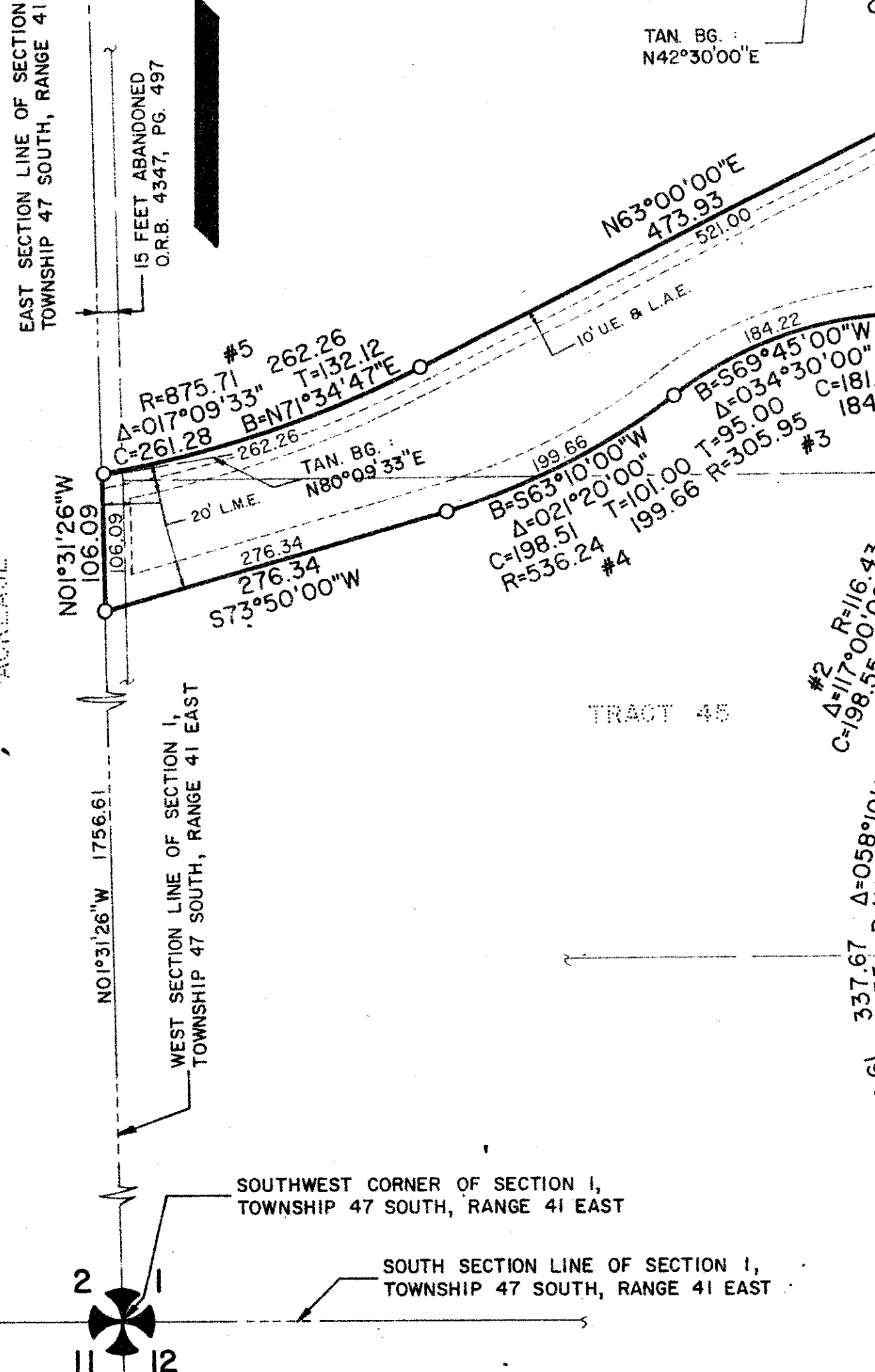
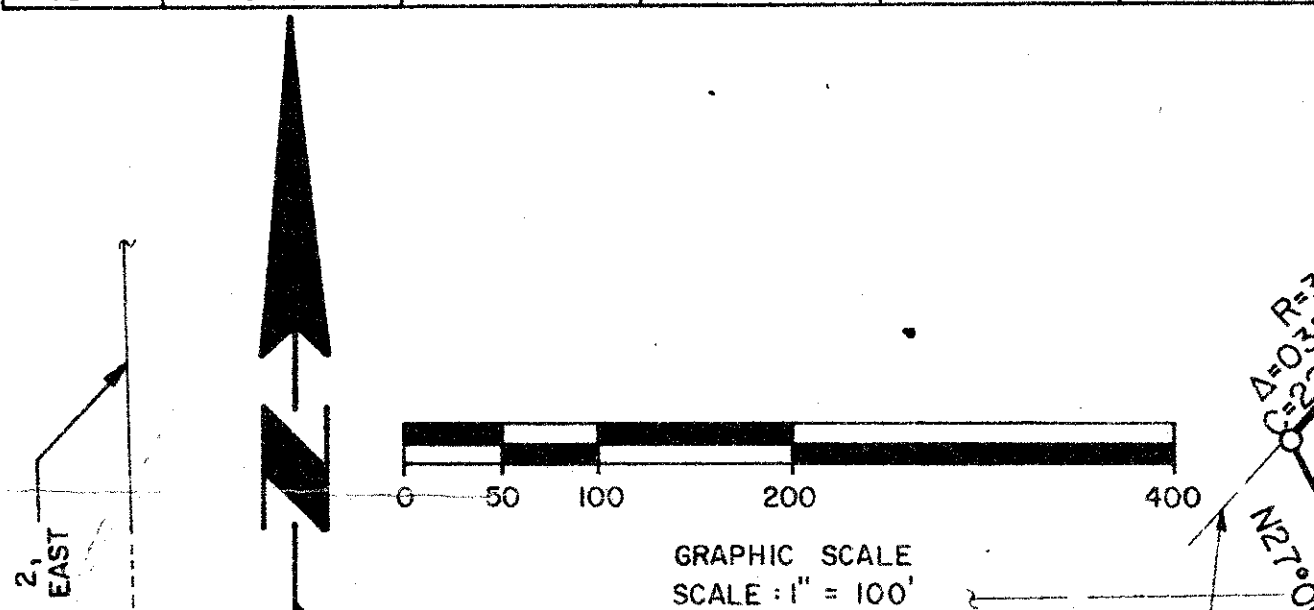
3



JOHN A. GRANT, JR., INC.
 AUGUST 1984

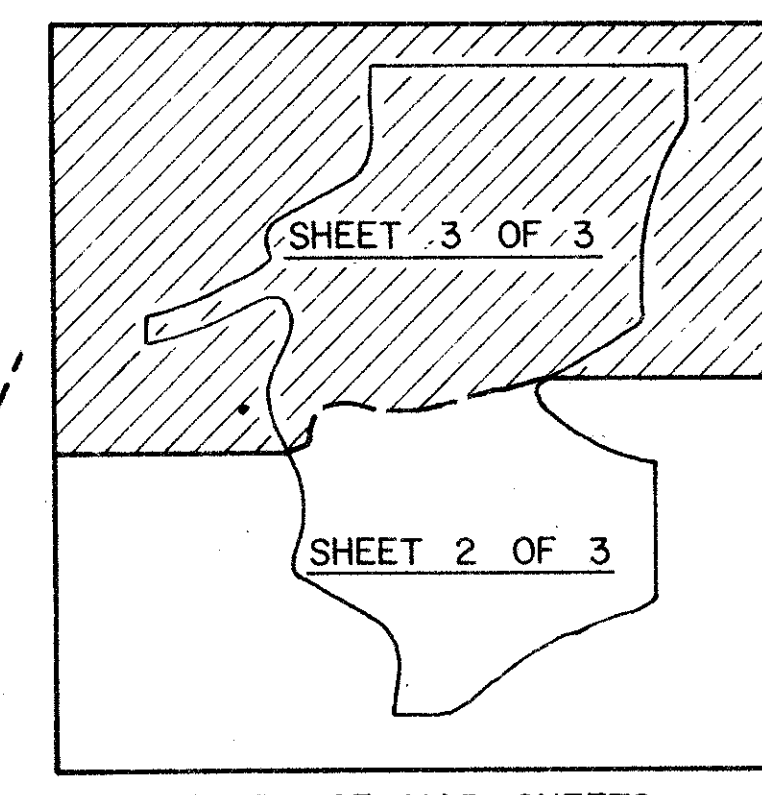
CONSULTING ENGINEERS AND LAND SURVEYORS

BOCA RATON, FLORIDA



* SEE SHEET 2 OF 3 FOR OTHER NOTES.

This instrument was prepared by:
 John A. Grant, Jr., John A. Grant, Jr., Inc.
 3333 North Federal Highway, Boca Raton, Florida 33431.



55/3

0388-005