

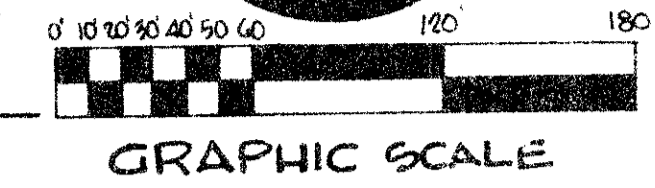
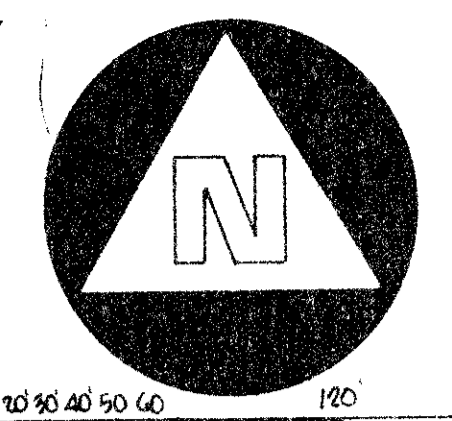
DRAWING NUMBER  
54/172

# RAINBOW LAKES 2

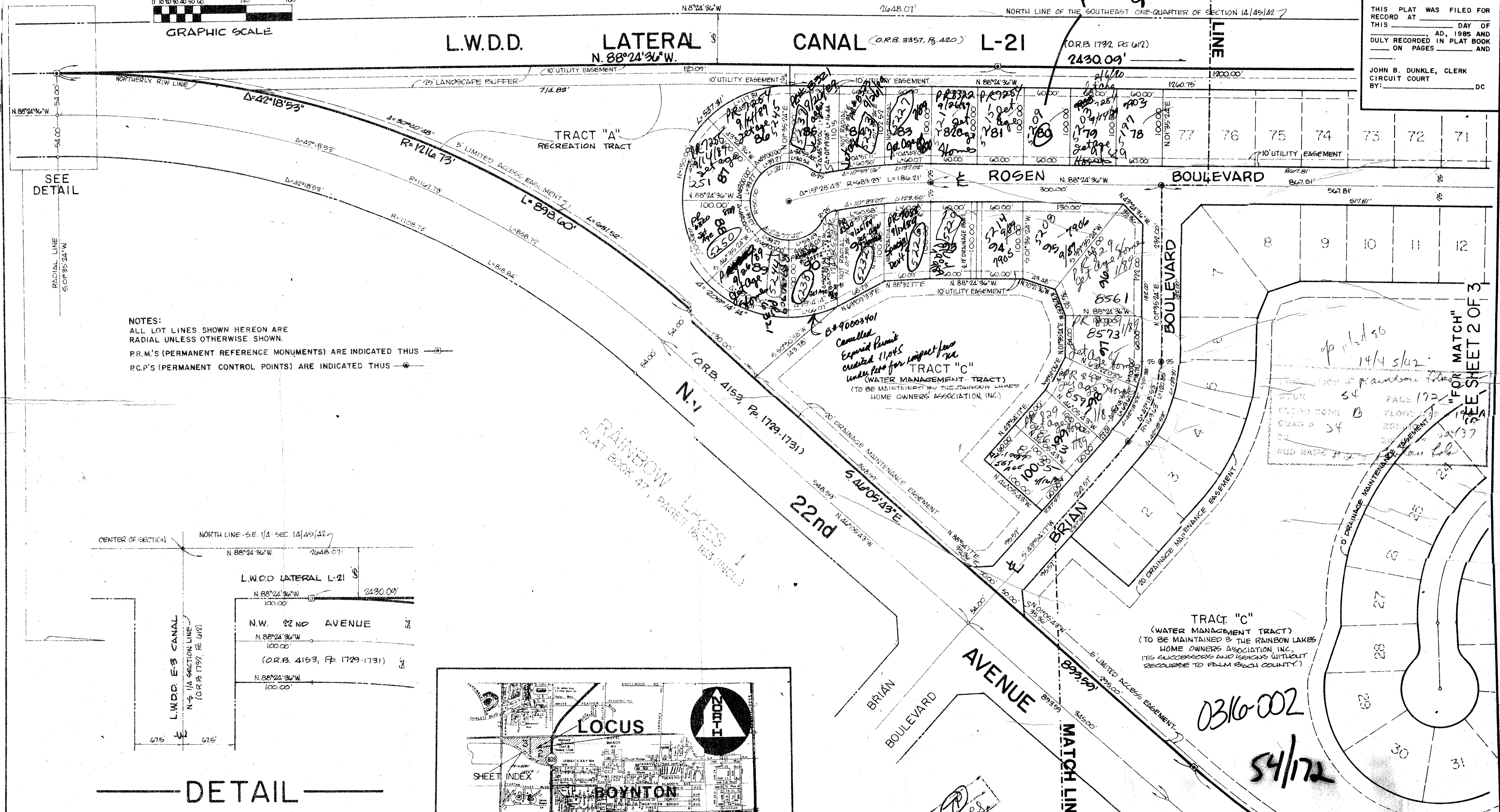
A PART OF TARTAN LAKES, P.U.D.  
BEING A PART OF SECTION 14, TOWNSHIP 45 SOUTH, RANGE 42 EAST, PALM BEACH COUNTY, FLORIDA

APRIL, 1985  
SHEET 3 of 3

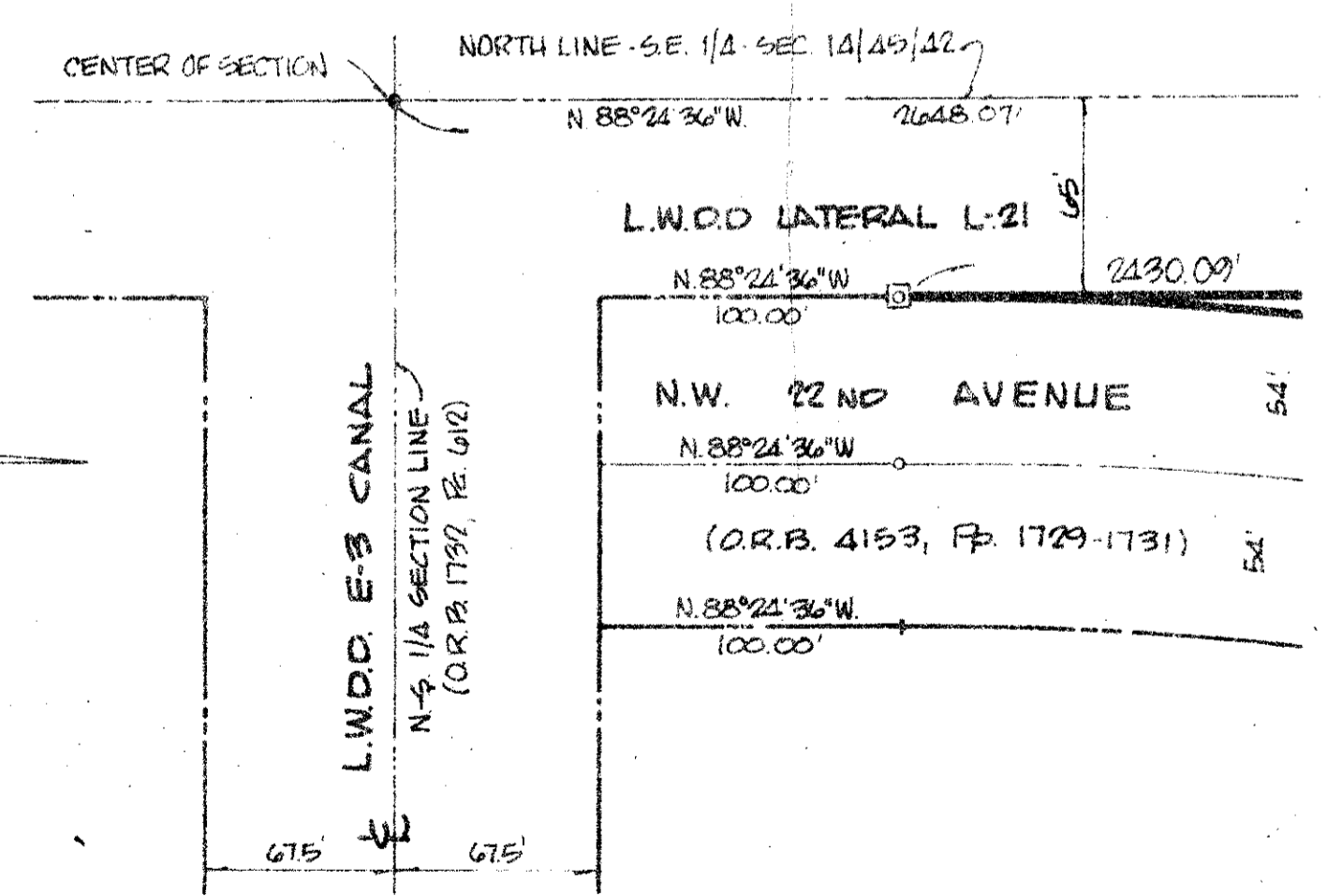
172



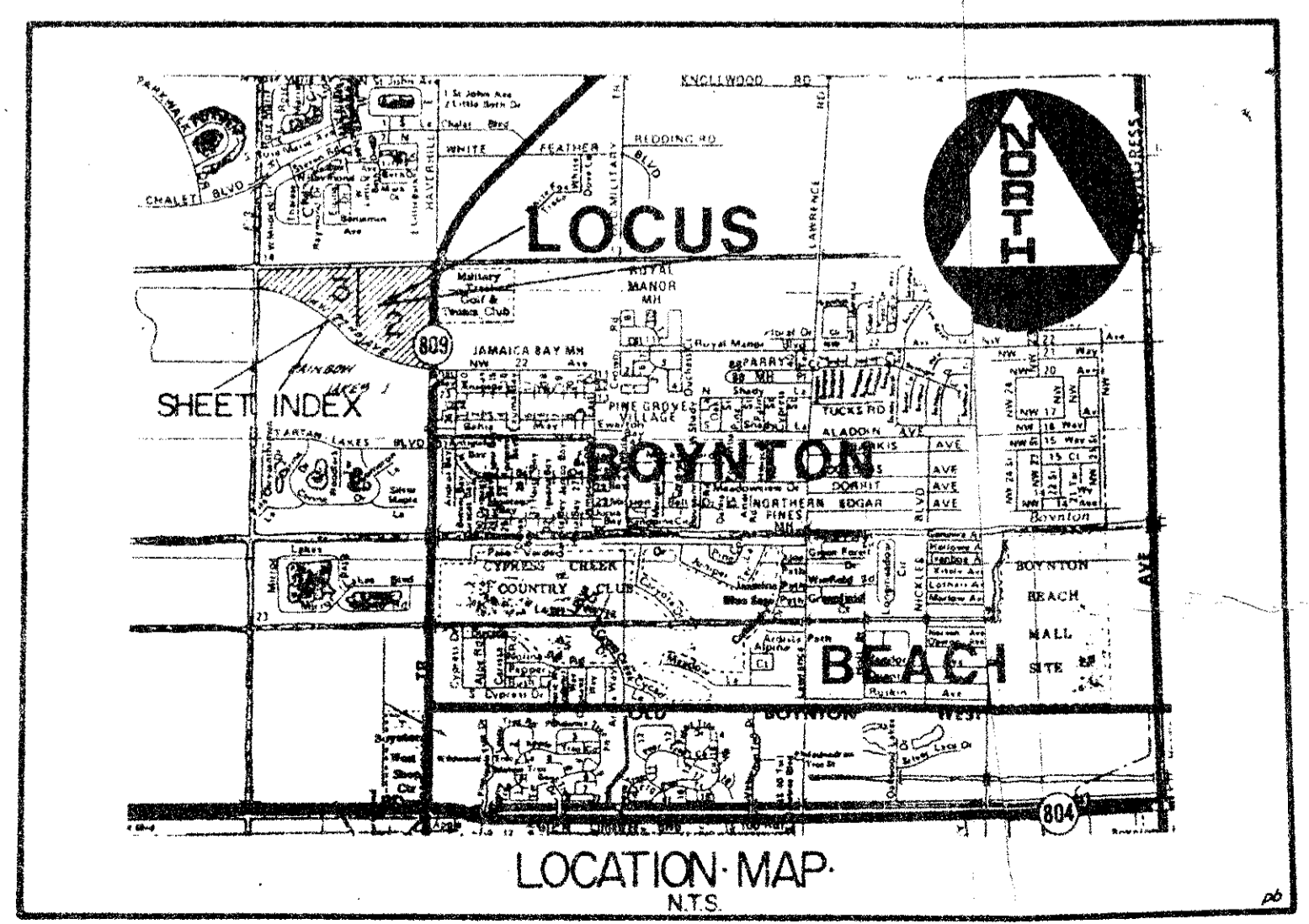
STATE OF FLORIDA  
COUNTY OF PALM BEACH  
THIS PLAT WAS FILED FOR  
RECORD AT \_\_\_\_\_ DAY OF  
\_\_\_\_\_ AD, 1985 AND  
DULY RECORDED IN PLAT BOOK  
ON PAGES \_\_\_\_\_ AND  
JOHN B. DUNKLE, CLERK  
CIRCUIT COURT  
BY: \_\_\_\_\_ DC



NOTES:  
ALL LOT LINES SHOWN HEREON ARE  
RADIAL UNLESS OTHERWISE SHOWN.  
P.R.M.'S (PERMANENT REFERENCE MONUMENTS) ARE INDICATED THUS .  
P.C.'S (PERMANENT CONTROL POINTS) ARE INDICATED THUS .



DETAIL



**BENCH MARK**  
land surveying and mapping, inc.  
WEST PALM BEACH, FLORIDA

**RAINBOW LAKES 2**  
RECORD PLAT

OWN ELO CRD DATE MAR 24 1985 NO. P.2500  
SCALE 1"=60' SIZE L FB P SHEET 3 OF 3

THIS INSTRUMENT WAS PREPARED BY WM. R. VAN CAMPEN, R.L.S., IN THE  
OFFICES OF BENCH MARK LAND SURVEYING AND MAPPING, INC., 50 SOUTH  
MILITARY TRAIL, SUITE 200, WEST PALM BEACH, FLORIDA 33415.  
(PHONE: 305-689-2111)

DRAWING NUMBER

DRAWING NUMBER

DRAWING NUMBER

"FOR MATCH"  
SEE SHEET 2 OF 3

0316-002  
54/172

PK24231  
10.4.90  
Gut 004

Cancelled  
Expired Permit  
created 11,045  
under Per for impact fee  
TRACT "C"  
(WATER MANAGEMENT TRACT)  
(TO BE MAINTAINED BY THE RAINBOW LAKES  
HOME OWNERS ASSOCIATION, INC.)

dp 11/2/86  
14/4/82  
54  
FALL 172  
FLOOR 205  
ROAD # 34  
BUD MADE # 2