

DRAWING NUMBER
54/117

GLENEAGLES PLAT EIGHT

(PARCEL "H", PART OF GLENEAGLES, A P.U.D.)

SITUATE IN SECTIONS 21 AND 28, TOWNSHIP 46 SOUTH, RANGE 42 EAST,
PALM BEACH COUNTY, FLORIDA, BEING A REPLAT OF A PORTION OF
GLENEAGLES PLAT ONE, (P.B. 5), PGS. 63 - 65).

SHEET 4 OF 4

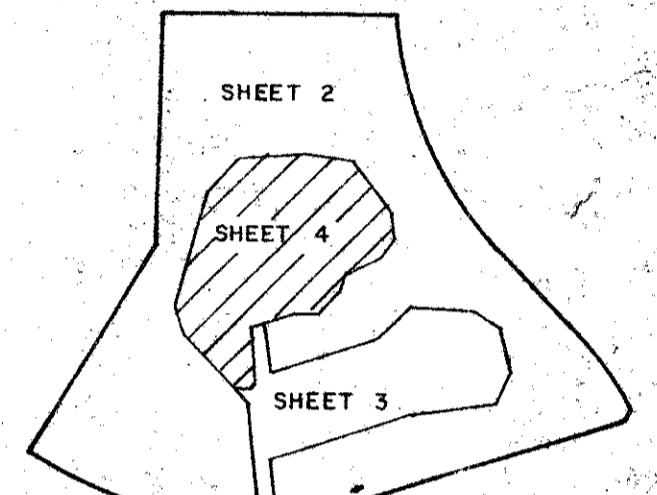
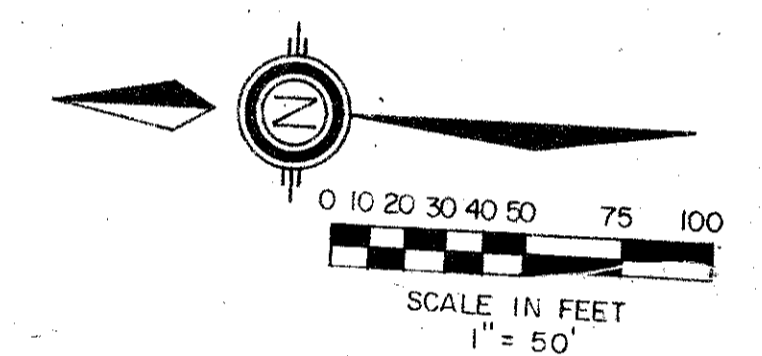
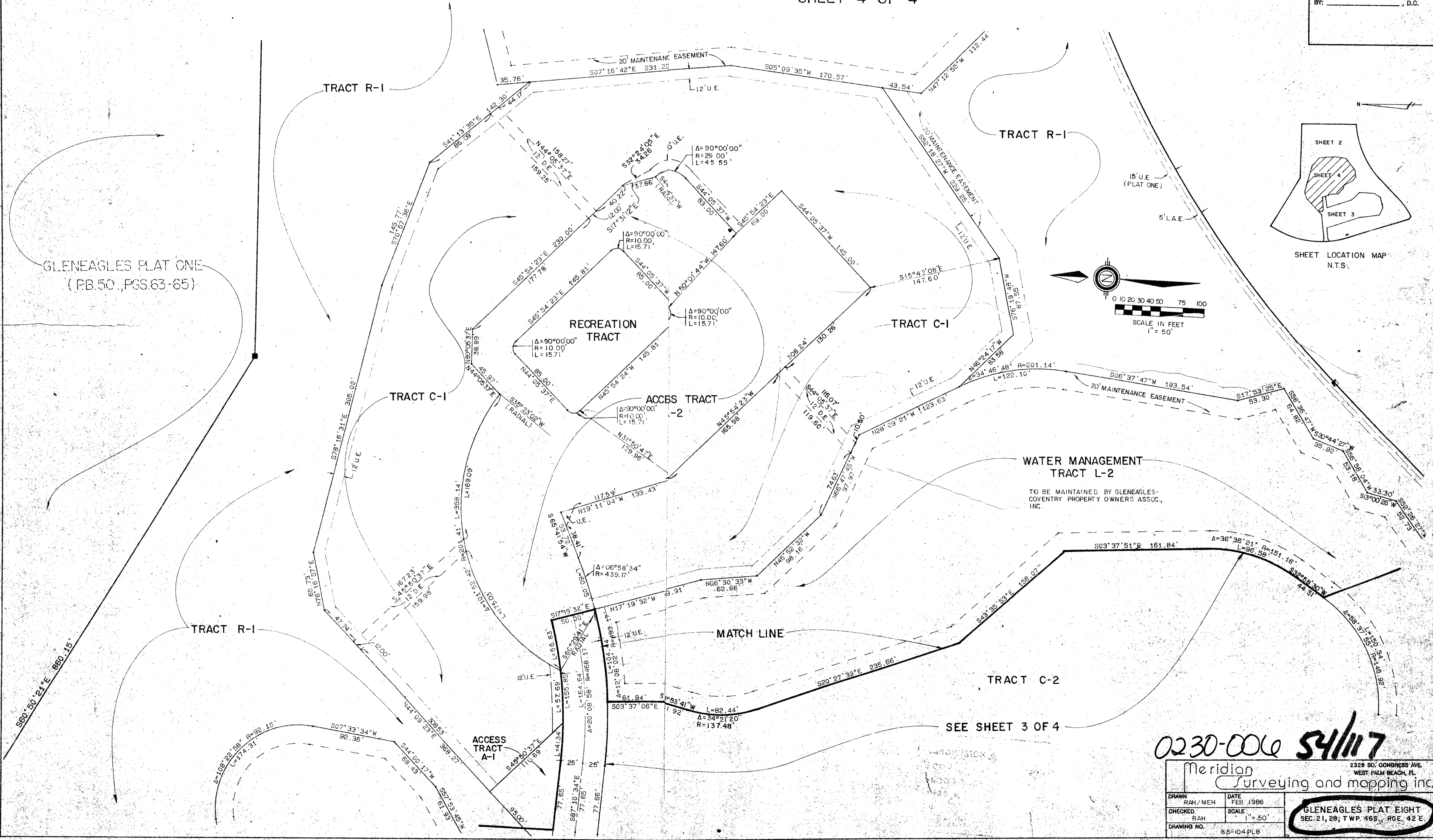
117

STATE OF FLORIDA
COUNTY OF PALM BEACH
THIS PLAT WAS FILED FOR
RECORD _____ DAY OF _____
AD, 1986 AND DULY RECORDED
IN PLAT BOOK _____ ON PAGES
_____ AND _____
JOHN B. DUNKLE, CLERK
BY: _____, D.C.

DRAWING NUMBER

DRAWING NUMBER

DRAWING NUMBER



WATER MANAGEMENT TRACT L-2

TO BE MAINTAINED BY GLENEAGLES-COVENTRY PROPERTY OWNERS ASSOC., INC.

SEE SHEET 3 OF 4

0230-006 **54/117**

Meridian		2328 SO. CONGRESS AVE. WEST PALM BEACH, FL.	
Surveying and mapping inc.			
DRAWN	RAH/MEH	DATE	FEB. 1986
CHECKED	RAH	SCALE	1" = 50'
DRAWING NO.	85-104 PL 8	GLENEAGLES PLAT EIGHT SEC. 21, 28; TWP. 46S., RGE. 42 E.	