

54/115

GLENEAGLES PLAT EIGHT

(PARCEL "H", PART OF GLENEAGLES, A P.U.D.)

SITUATE IN SECTIONS 21 AND 28, TOWNSHIP 46 SOUTH, RANGE 42 EAST, PALM BEACH COUNTY, FLORIDA, BEING A REPLAT OF A PORTION OF GLENEAGLES PLAT ONE, (P.B. 50, PGS. 63 - 65).

GLENEAGLES PLAT ONE (P.B. 50, PGS. 63-65)

SHEET 2 OF 4

115

STATE OF FLORIDA
COUNTY OF PALM BEACH
THIS PLAT WAS FILED FOR
RECORD _____
THIS _____ DAY OF _____
AD, 1986 AND DULY RECORDED
IN PLAT BOOK _____ ON PAGES
_____ AND _____
JOHN B. DUNKLE, CLERK
BY: _____, D.C.

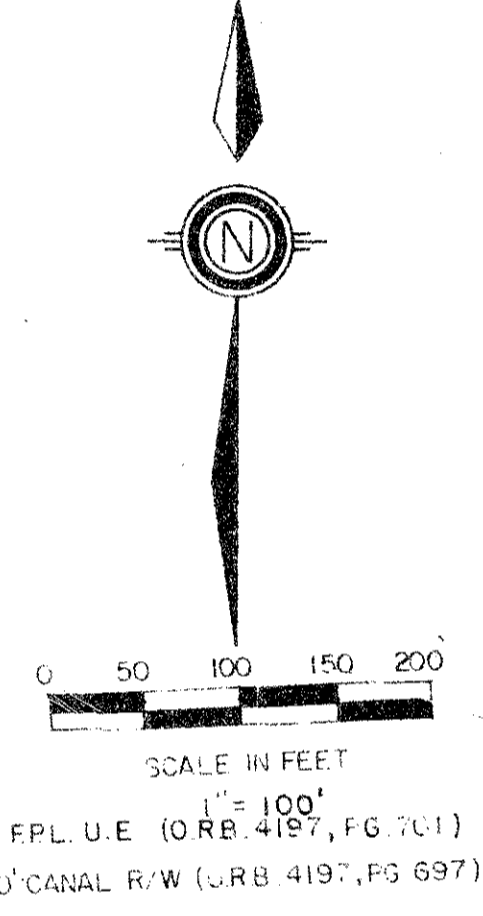
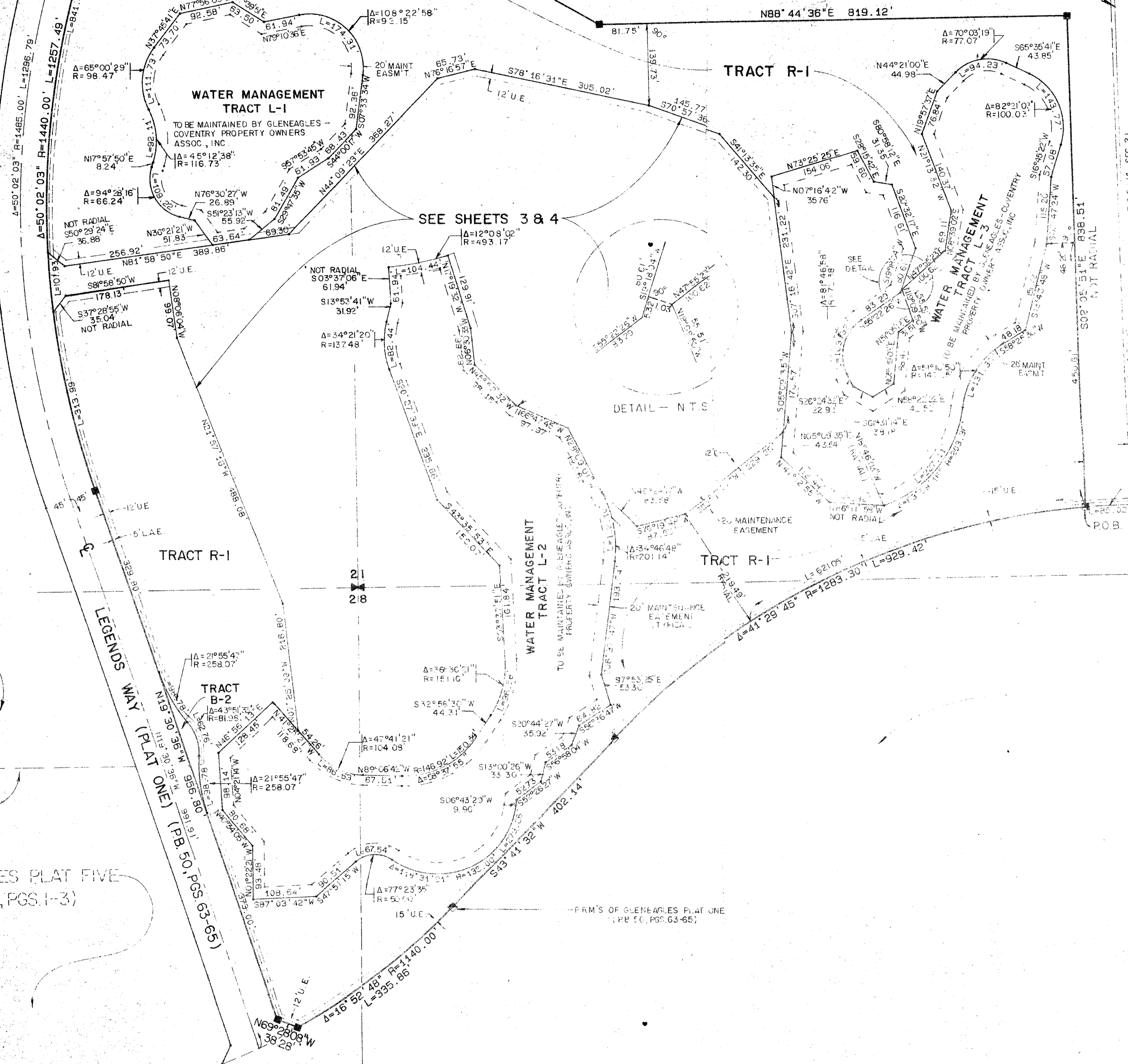
GLENEAGLES PLAT FOUR
(P.B. 51, PGS. 135-137)

GLENEAGLES PLAT FIVE
(P.B. 52, PGS. 1-3)

DRAWING NUMBER

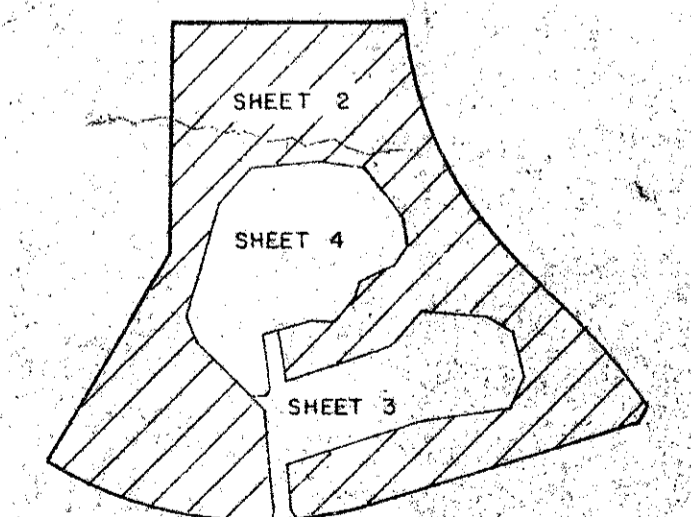
DRAWING NUMBER

DRAWING NUMBER



UNPLATTED

UNPLATTED



SHEET LOCATION MAP
N.T.S.

0230-006 54/115

Meridian Surveying and mapping inc.
2324 SO. CONGRESS AVE.
WEST PALM BEACH, FL

DRAWN RAH / MEH	DATE FEB. 1986
CHECKED RAH	SCALE 1" = 100'
DRAWING NO. 85-104 PL 8	GLENEAGLES PLAT EIGHT SEC. 21, 28, TWP. 46 S., RGE. 42 E.