

54/77

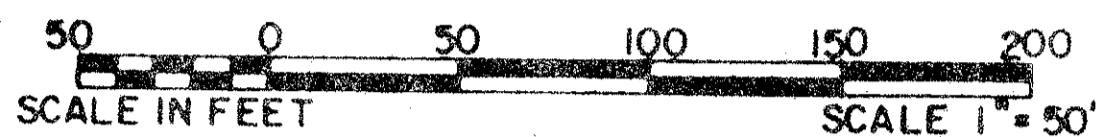
77

BROOKSIDE - PLAT NO. 3 OF PALM BEACH POLO AND COUNTRY CLUB

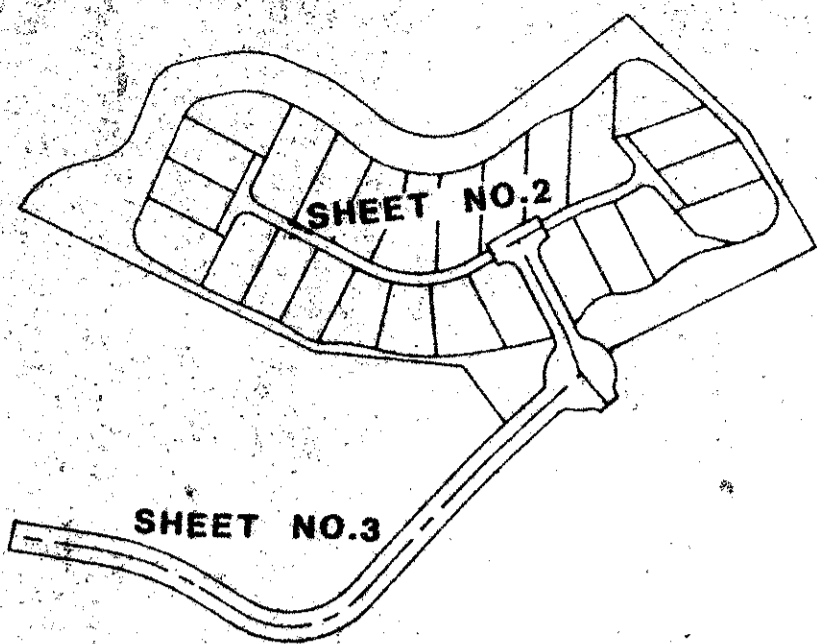
WELLINGTON P.U.D.

IN PART OF SECTION 14, TOWNSHIP 44 SOUTH, 41 EAST
PALM BEACH COUNTY, FLORIDA
IN THREE SHEETS SHEET NO. 3

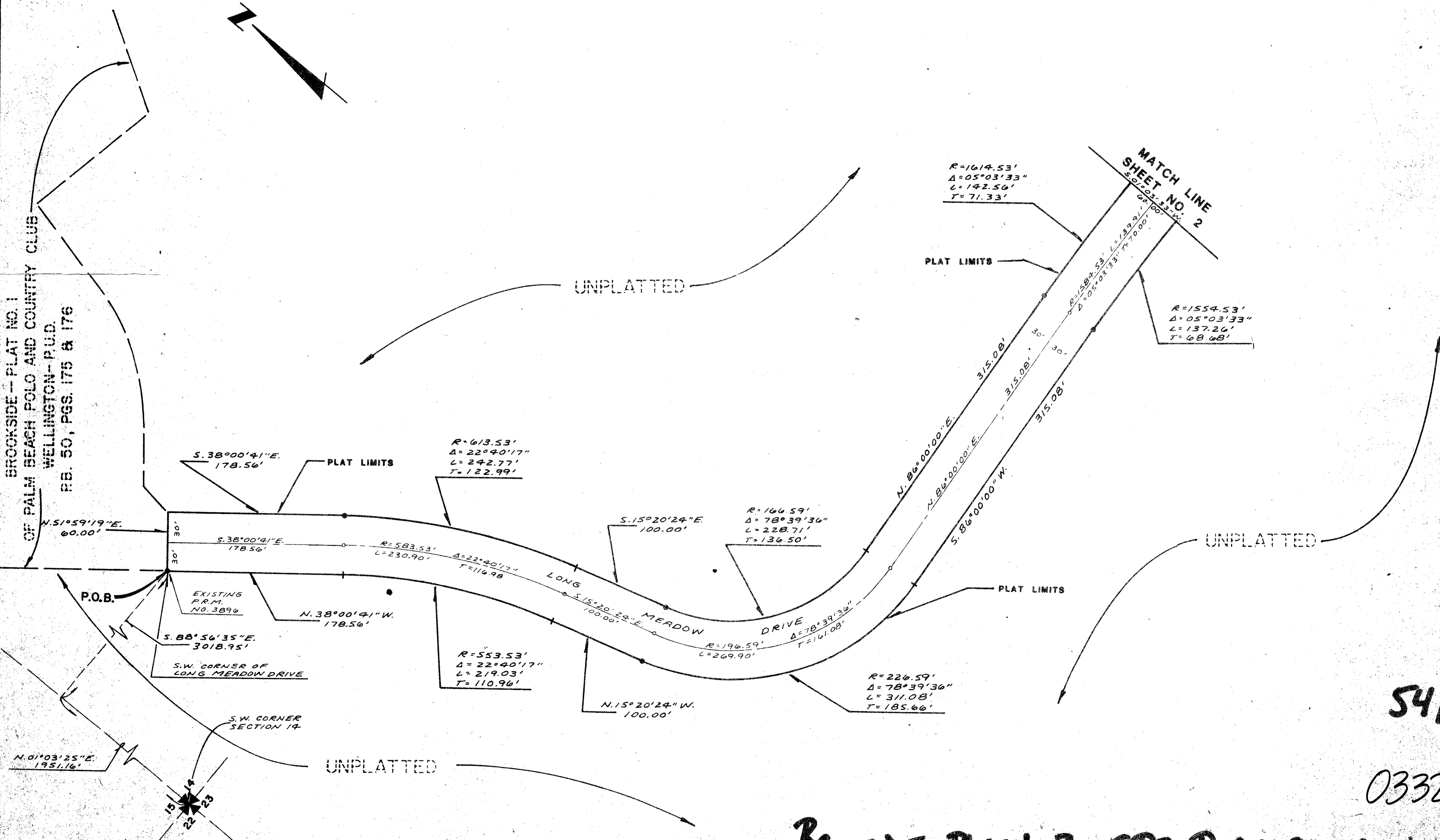
GEE & JENSON
ENGINEERS - ARCHITECTS - PLANNERS, INC.
WEST PALM BEACH FLORIDA
MAY 1986



STATE OF FLORIDA
COUNTY OF PALM BEACH
This plat was filed for
record at _____ M. this _____ day
of _____ 1985; and duly
recorded in Plat Book No. _____
on Pages _____ thru _____
JOHN B. DUNKLE
Clerk Circuit Court
By: _____ D.C.



KEY MAP
N.T.S.



BROOKSIDE - PLAT NO. 1
OF PALM BEACH POLO AND COUNTRY CLUB
WELLINGTON-P.U.D.
P.B. 50, PGS. 175 & 176

54/77

0332-002

BROOKSIDE - PLAT No. 3 OF P.B. P. AND C.C. WELLINGTON

DRAWING NUMBER
PLAN-HOLD CORPORATION • IRVINE, CALIFORNIA
REGISTERED PROFESSIONAL ENGINEER
REGISTERED PROFESSIONAL ARCHITECT
REGISTERED PROFESSIONAL PLANNER