

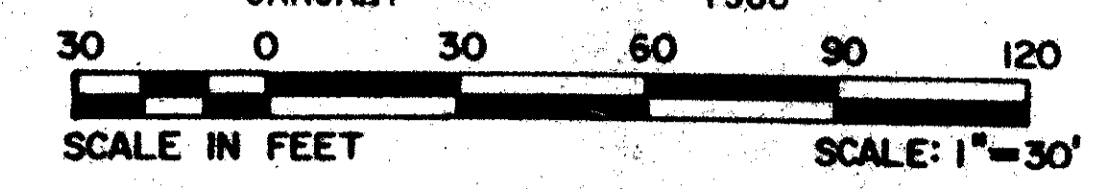
5462

62

# TRACT 42 - B OF WELLINGTON P.U.D.

IN PART OF SECTION 10, TOWNSHIP 44 SOUTH, RANGE 41 EAST  
PALM BEACH COUNTY, FLORIDA  
IN NINE SHEETS SHEET NO. 5

GEE & JENSON  
ENGINEERS - ARCHITECTS - PLANNERS, INC.  
WEST PALM BEACH, FLORIDA  
JANUARY 1986



MATCH LINE SHEET NO. 2

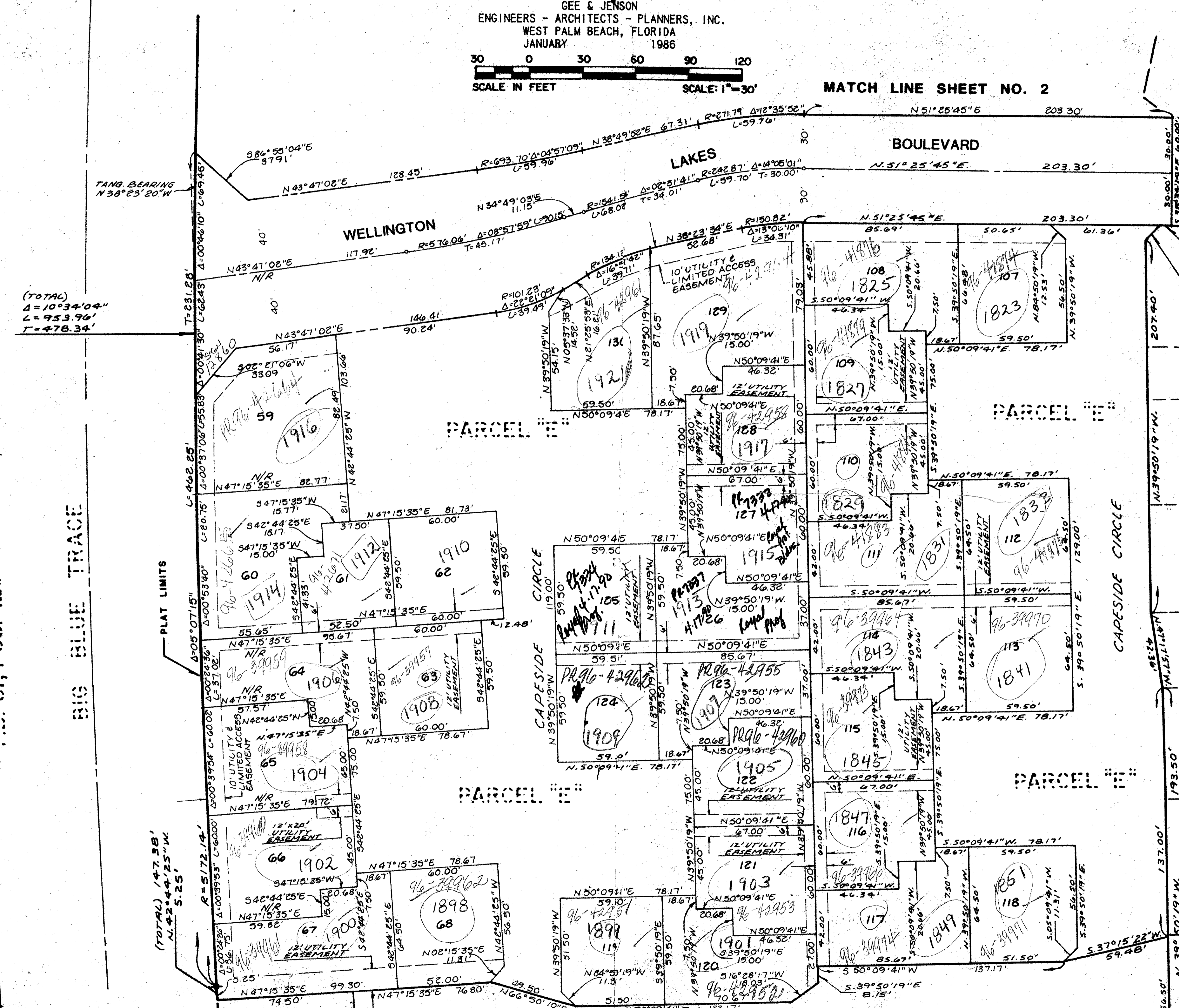
STATE OF FLORIDA  
COUNTY OF PALM BEACH  
This plat was filed for  
record at \_\_\_\_\_ M. this \_\_\_\_\_ day  
of \_\_\_\_\_ 1986, and duly  
recorded in Plat Book No. \_\_\_\_\_  
on Pages \_\_\_\_\_ thru \_\_\_\_\_  
JOHN B. DUNKLE  
Clerk Circuit Court  
By: \_\_\_\_\_ D.C.

DRAWING NUMBER

DRAWING NUMBER

DRAWING NUMBER

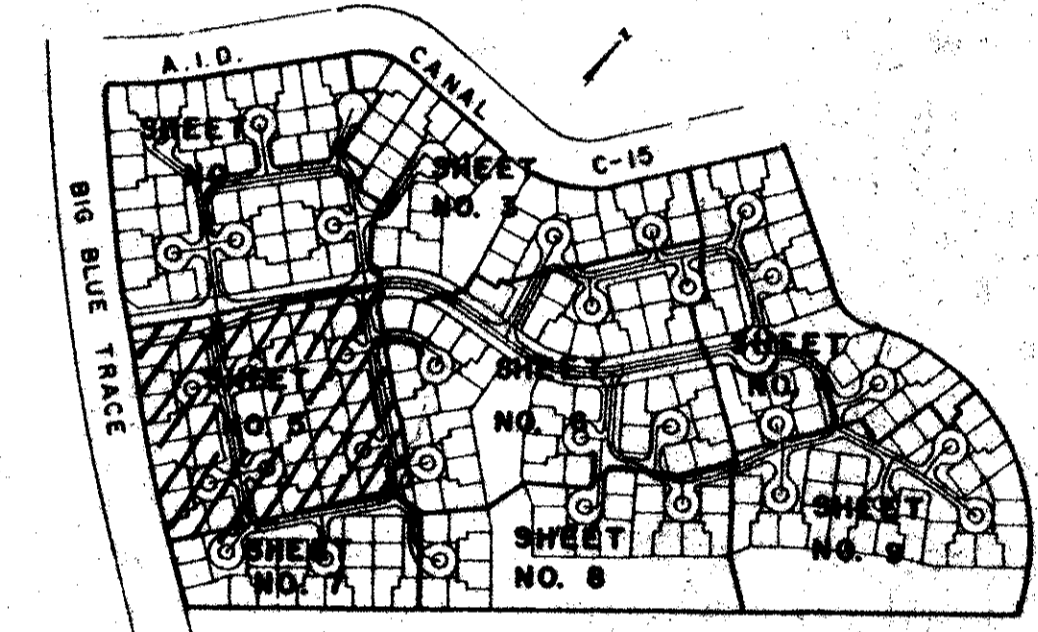
GREENVIEW SHORES NO. 2  
OF WELLINGTON P.U.D.  
P.B. 31, PGS. 120-136 INCLUSIVE



MATCH LINE SHEET NO. 3

MATCH LINE SHEET NO. 6

MATCH LINE SHEET NO. 7



Subdivision = Wellington  
BOOK 54 PAGE 62  
FLOOD ZONE B FLOOD MAP # 1009  
QUAD # 62 ZONING  
SE ZIP CODE 33414  
PUD NAME Lot 42-B

54/62 Pet. 86-32  
0332-063  
TRACT 42-B OF  
WELLINGTON P.U.D.