

54/56

BRIARRIDGE PLAT TWO

A PART OF LAKES OF BOYNTON BEACH, A P.U.D.
SITUATE IN SECTION 22, TOWNSHIP 45 SOUTH, RANGE 42 EAST
PALM BEACH COUNTY, FLORIDA

SEPTEMBER, 1985

SHEET 2 OF 3

56

STATE OF FLORIDA
COUNTY OF PALM BEACH
THIS PLAT WAS FILED FOR
RECORD AT _____
THIS _____ DAY OF _____
AD, 1985 AND DULY RECORDED
IN PLAT BOOK _____ ON PAGES
_____ AND _____
JOHN B. DUNKLE, CLERK
BY: _____, D.C.

NO.	DELTA	RADIUS	LENGTH
C1	53°20'37"	25.00'	23.28'
C2	53°20'37"	25.00'	23.28'
C3	90°15'07"	20.07'	31.61'
C4	1°15'56"	1131.95'	25.00'
C5	53°20'37"	25.00'	23.28'
C6	53°20'37"	25.00'	23.28'
C7	123°34'49"	15.00'	32.35'
C8	113°19'16"	20.00'	39.56'

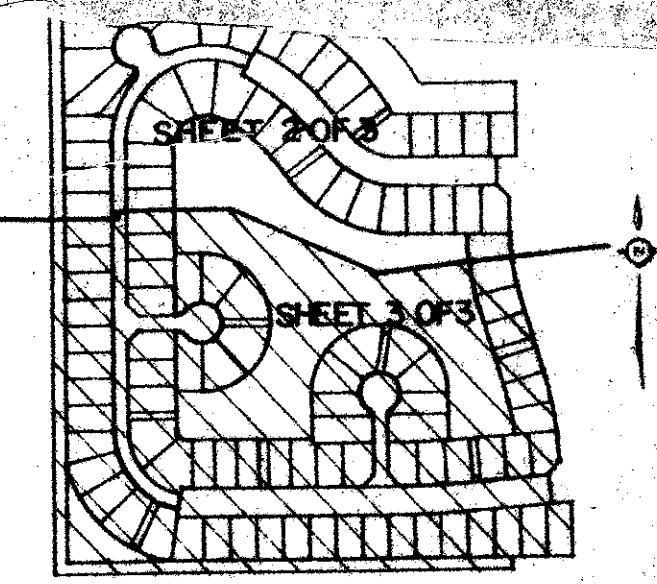
APPROVED BY
PALM BEACH COUNTY HEALTH DEPT.
DATE: 11/10/85 NO. 13621-A
SUBJECT TO THE FOLLOWING:
1. ALL SWIMMING POOL & ZONING DEPT.
2. ALL SWIMMING POOL MUST BE OBTAINED
FROM HEALTH DEPT. PRIOR TO USE
3. ALL SWIMMING POOL MUST BE OBTAINED FROM THE
SWIMMING POOL & SWIMMER SYSTEM
4. SWIMMING POOL MUST BE OBTAINED FROM THE HEALTH DEPT.
PRIOR TO CONSTRUCTION.

0391-004

Meridian Surveying and mapping, inc.
WEST PALM BEACH, FLORIDA

DRAWN	MHC / MEH	DATE	APRIL, 1985
CHECKED	WBH	SCALE	1" = 50'
DRAWING NO.	84-P2-105		

BRIARRIDGE PLAT TWO
PART OF LAKES OF BOYNTON BEACH, PUD



SUBDIVISION = Briarridge
BOOK 54 PAGE 50
FLOOD ZONE B FLOOD MAP # 185A
QUAD # 35 ZONING
SE ZIP CODE 33437
PUD NAME Plat 2

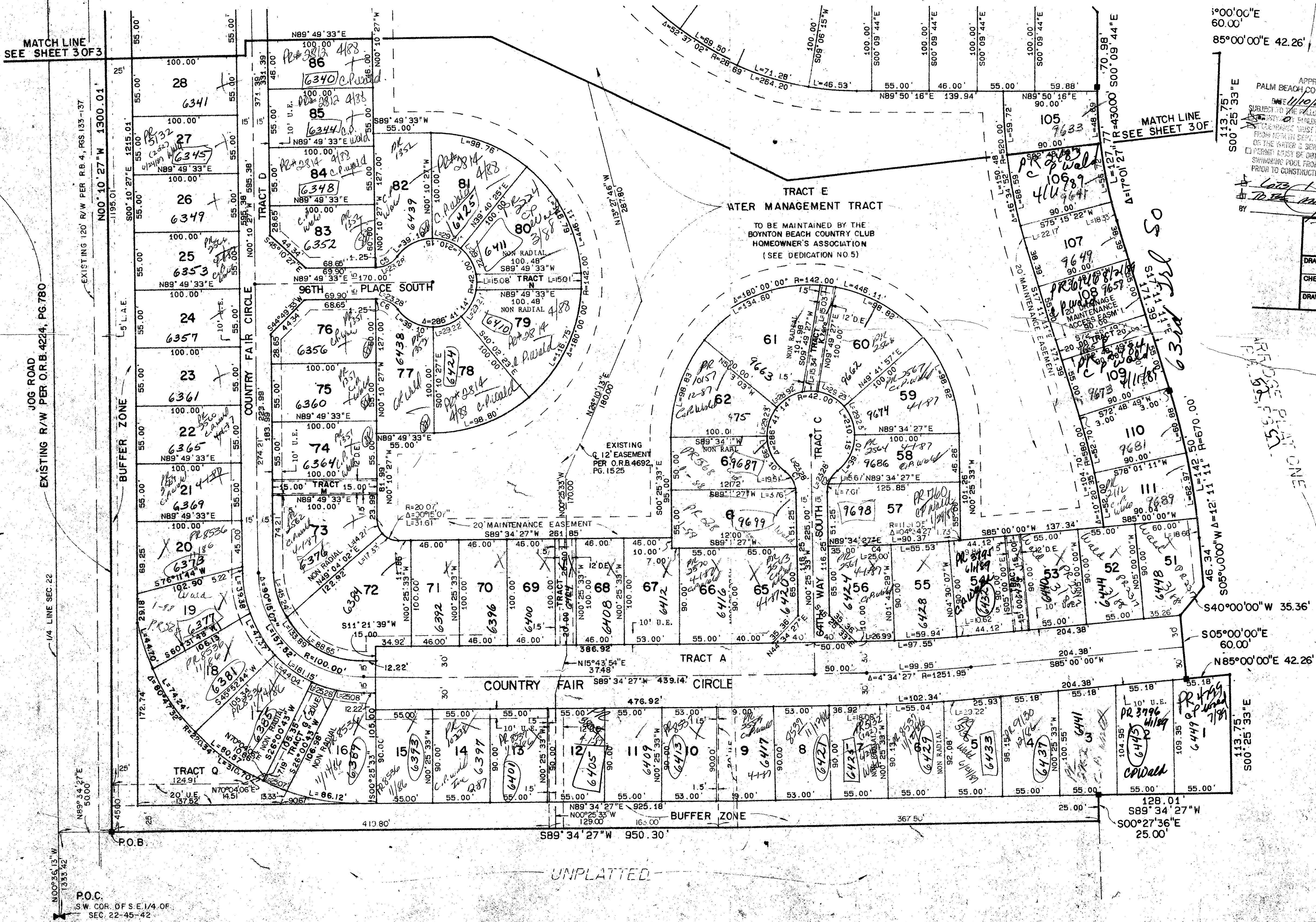
NO.	DELTA	RADIUS	LENGTH
C1	53°20'37"	25.00'	23.28'
C2	53°20'37"	25.00'	23.28'
C3	90°15'07"	20.07'	31.61'
C4	1°15'56"	1131.95'	25.00'
C5	53°20'37"	25.00'	23.28'
C6	53°20'37"	25.00'	23.28'
C7	123°34'49"	15.00'	32.35'
C8	113°19'16"	20.00'	39.56'

0391-004
54/56

Meridian Surveying and mapping, inc.
WEST PALM BEACH, FLORIDA

DRAWN	MHC / MEH	DATE	APRIL, 1985
CHECKED	WBH	SCALE	1" = 50'
DRAWING NO.	84-P2-105		

BRIARRIDGE PLAT TWO
PART OF LAKES OF BOYNTON BEACH, PUD



DRAWING NUMBER

DRAWING NUMBER

DRAWING NUMBER

UNPLATTED