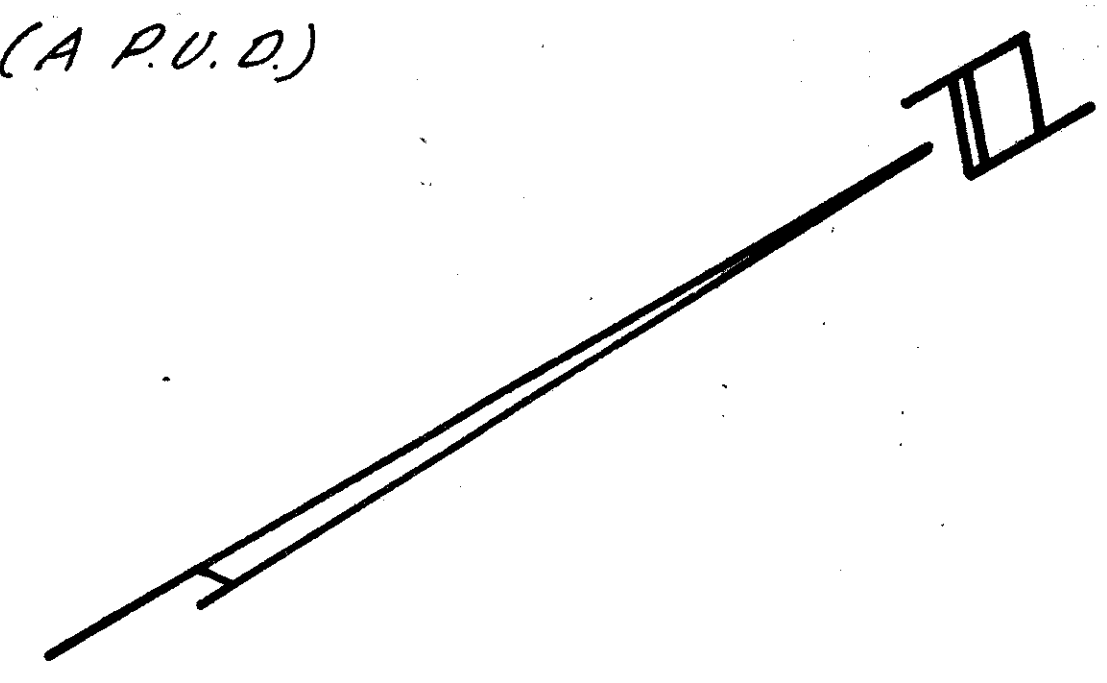
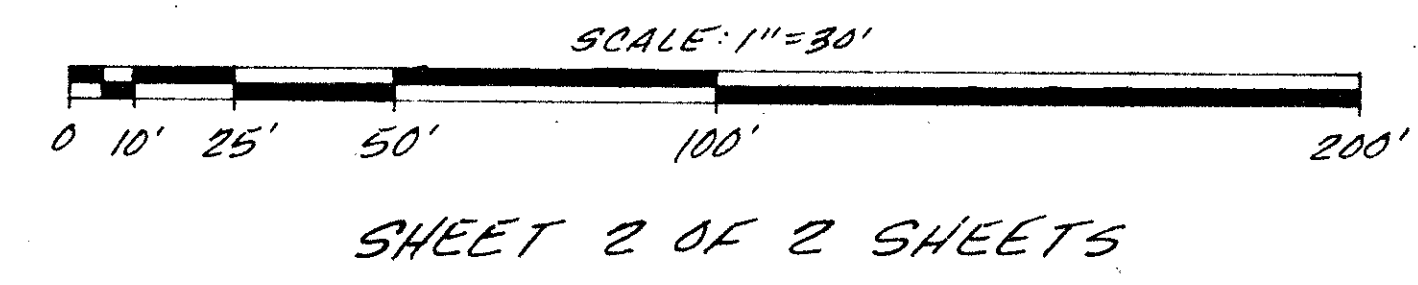


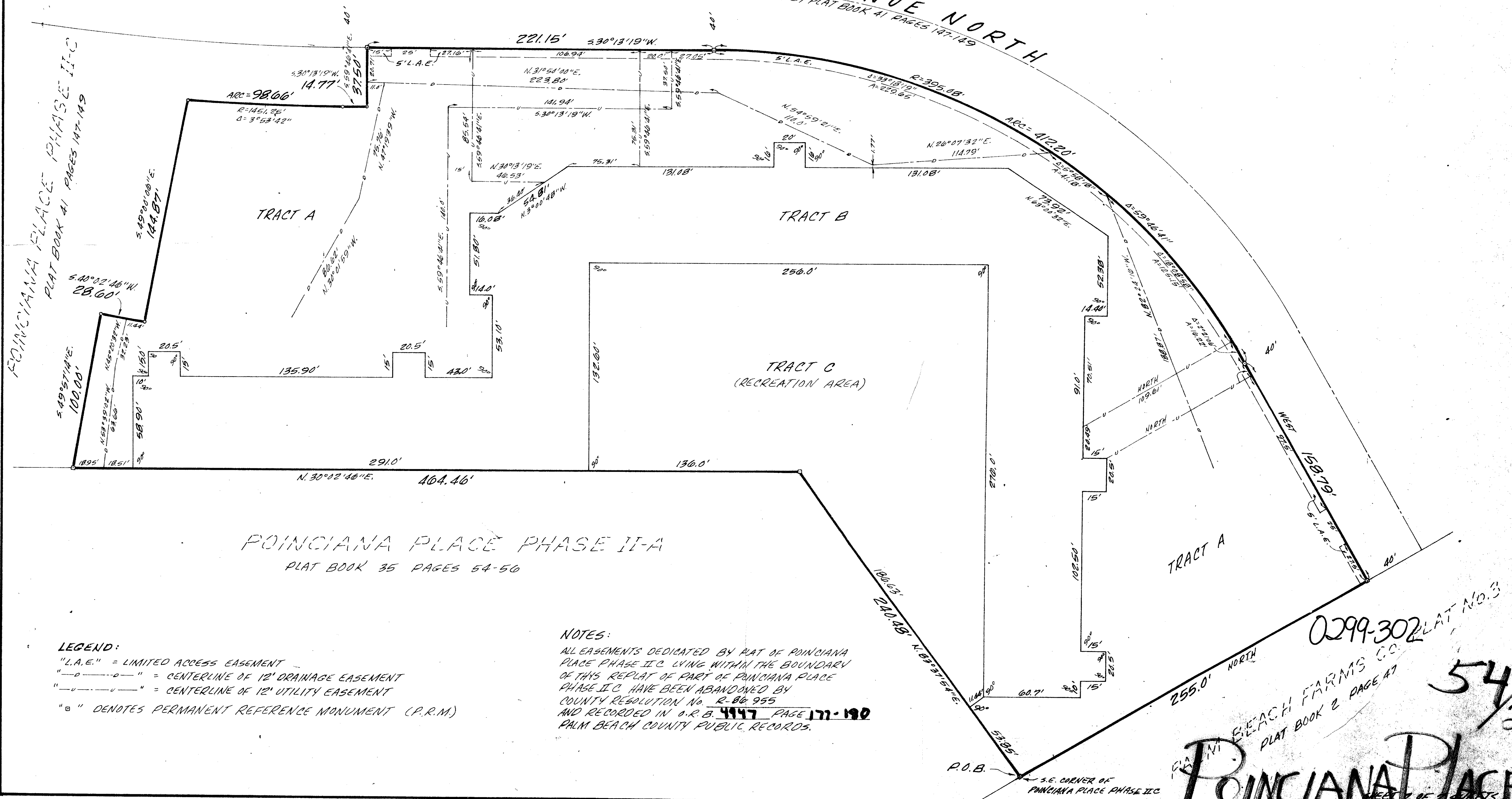
54/26

26

PLAT OF  
REPLAT OF PART OF POINCIANA PLACE PHASE II-C (A.P.U.D.)  
(PLAT BOOK 41 PAGES 147, 148 AND 149)  
SECTION 22, TOWNSHIP 44 SOUTH, RANGE 42 EAST  
PALM BEACH COUNTY, FLORIDA.



10TH AVENUE NORTH  
80' R/W BY PLAT BOOK 41 PAGES 147-149



DRAWING NUMBER

DRAWING NUMBER

DRAWING NUMBER

PLAN HOLD CORPORATION • IRVINE, CALIFORNIA  
REGISTERED NUMBER 07144

- LEGEND:
- "L.A.E." = LIMITED ACCESS EASEMENT
  - "- - - -" = CENTERLINE OF 12' DRAINAGE EASEMENT
  - "- - - -" = CENTERLINE OF 12' UTILITY EASEMENT
  - "o" DENOTES PERMANENT REFERENCE MONUMENT (P.R.M.)

NOTES:

ALL EASEMENTS DEDICATED BY PLAT OF POINCIANA PLACE PHASE II-C LYING WITHIN THE BOUNDARY OF THIS REPLAT OF PART OF POINCIANA PLACE PHASE II-C HAVE BEEN ABANDONED BY COUNTY RESOLUTION No. R-86 955 AND RECORDED IN O.R.B. 4147 PAGE 177-190 PALM BEACH COUNTY PUBLIC RECORDS.

0299-302 PLAT NO. 3  
PALM BEACH FARMS CO.  
PLAT BOOK 2 PAGE 47  
POINCIANA PLACE  
SHEET 2 OF 2 SHEETS

54/26