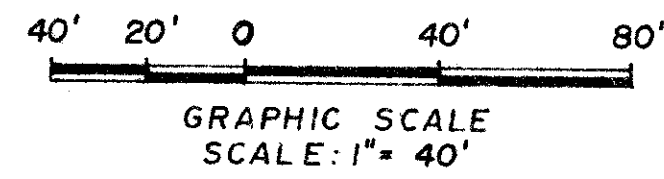


REGENCY AT BOCA POINTE

A REPLAT OF A PORTION OF TRACT Q, BOCA POINTE No. 1 P.U.D., PLAT BOOK 42, PAGES 141, 142 and 143, PUBLIC RECORDS OF PALM BEACH COUNTY, FLORIDA, LYING IN SECTION 33, TOWNSHIP 47 SOUTH, RANGE 42 EAST

FORTIN, LEAVY, SKILES, INC.
 CONSULTING ENGINEERS & LAND SURVEYORS
 855 SOUTH FEDERAL HWY., BOCA RATON, FLA. 33432
 180 NE. 168th STREET, NORTH MIAMI BEACH, FLA. 33162
 DAGE 653-4493 / BROW 463-7180 / BOCA RATON 395-7378

DATE: FEB. 1986



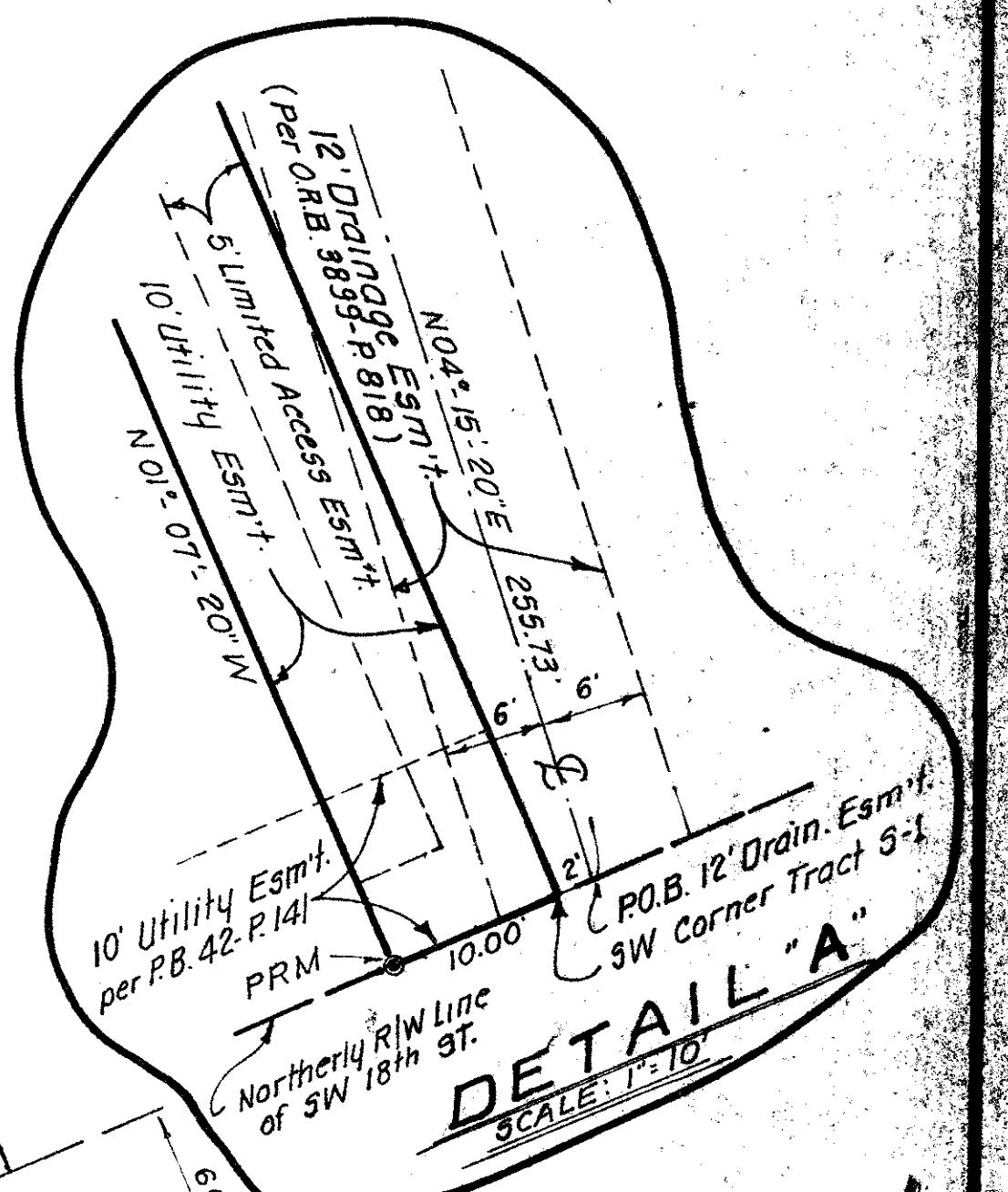
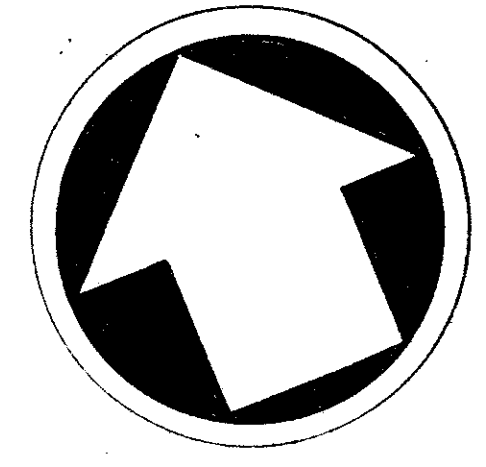
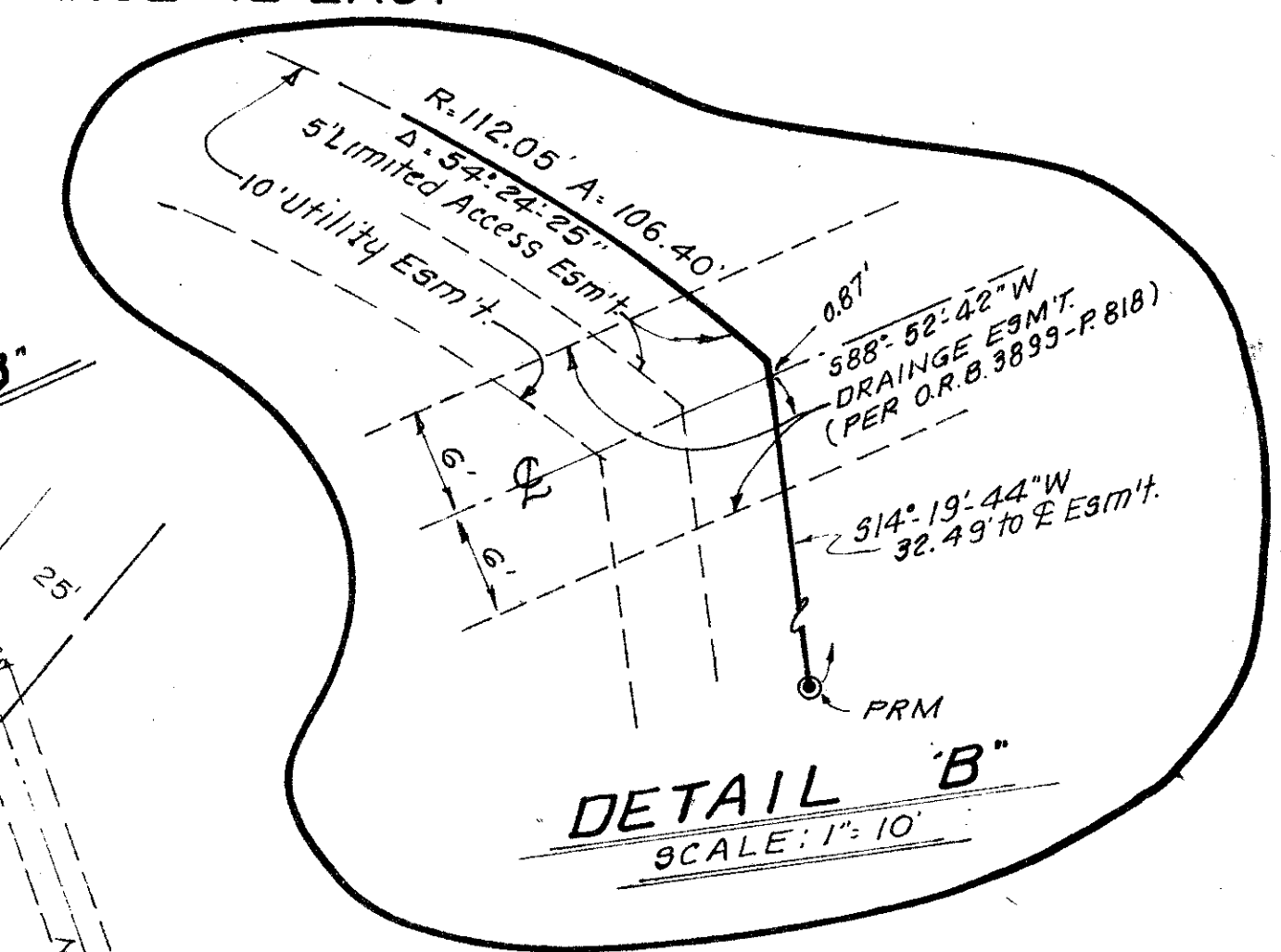
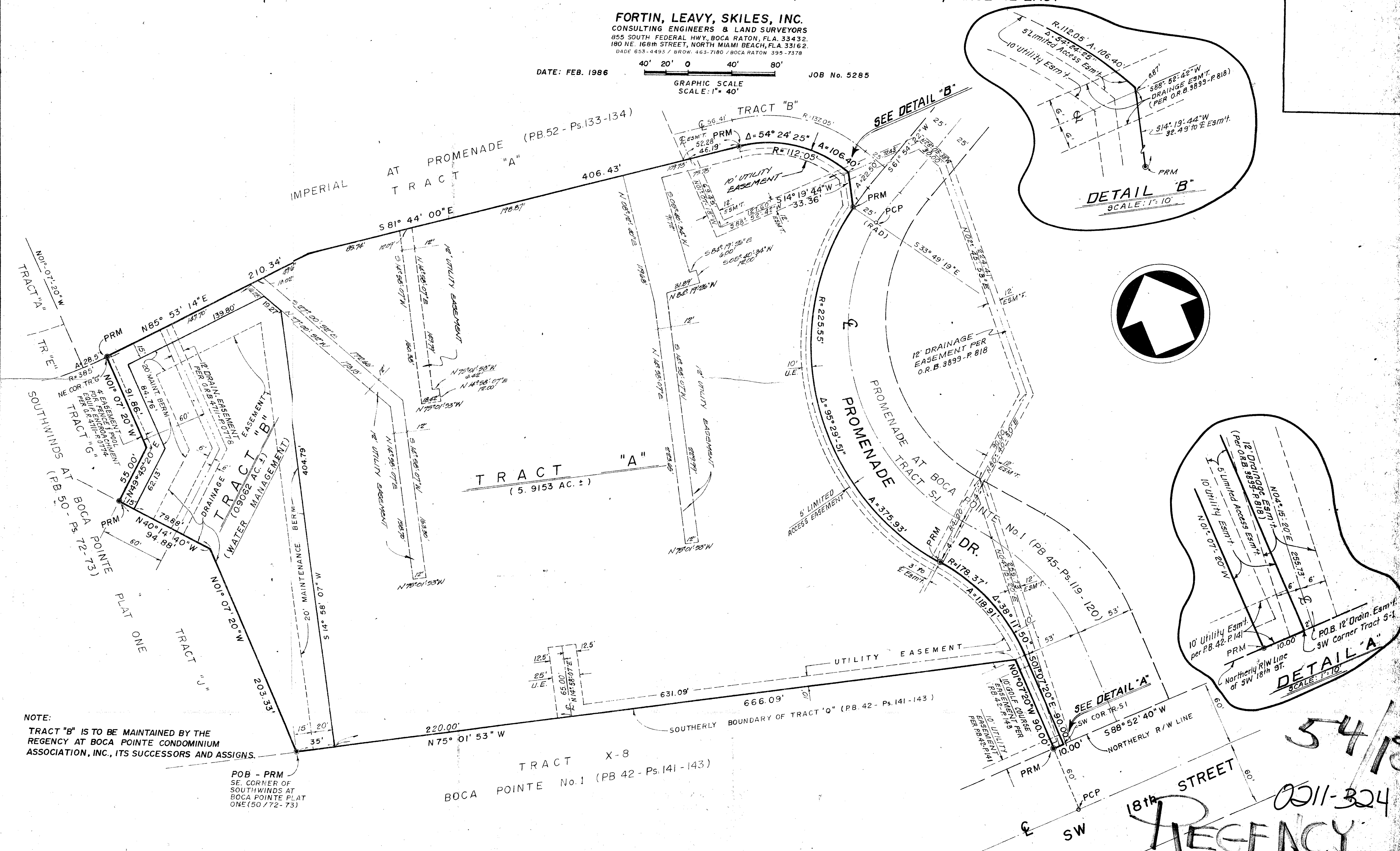
JOB No. 5285

DRAWING NUMBER
54/18

DRAWING NUMBER

DRAWING NUMBER

DRAWING NUMBER



NOTE:
 TRACT "B" IS TO BE MAINTAINED BY THE REGENCY AT BOCA POINTE CONDOMINIUM ASSOCIATION, INC., ITS SUCCESSORS AND ASSIGNS.

POB - PRM
 SE CORNER OF
 SOUTHWINDS AT
 BOCA POINTE PLAT
 ONE (50/72-73)

54/18

0011-324

REGENCY